

62,501 SF

Industrial Space For Lease



Prologis Park Kent 15



7202 S 212th Street
Kent, WA 98032 USA

LOCATION

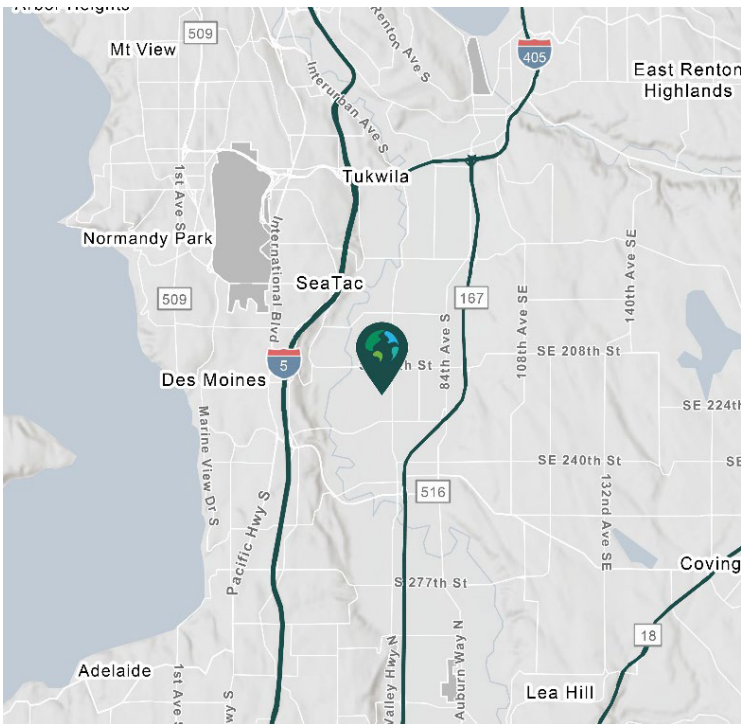
- Easy access to I-5, I-405 and SR 167
- Located on Kent Valley's 50-yard line with excellent visibility
- Within 10 miles of Sea-Tac Airport

FACILITY

- 62,501 SF total available
 - 3,355 SF 1st floor office
 - 2,757 SF mezzanine
- 26' clear height
- 50'0" x 24'5" typical column spacing
- 9 dock-high doors and 1 grade-level door
- Available now

ADVANTAGES AND AMENITIES

- Access to the Prologis Essentials platform, which includes:
 - [Operations Essentials](#)
 - [Energy Essentials](#)
 - [Workforce Essentials](#)
 - [Mobility Essentials](#)
 - [Digital Essentials](#)



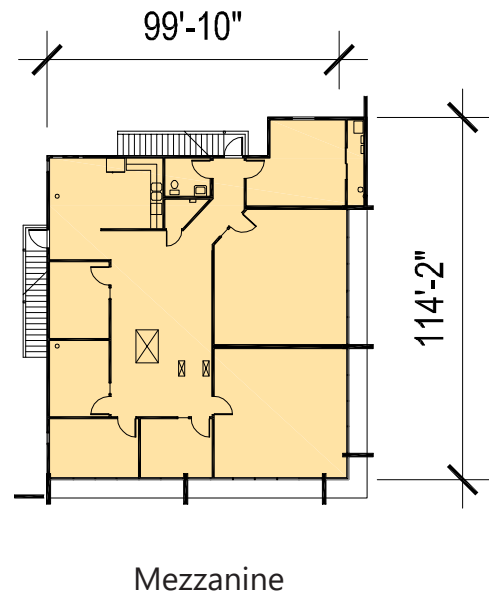
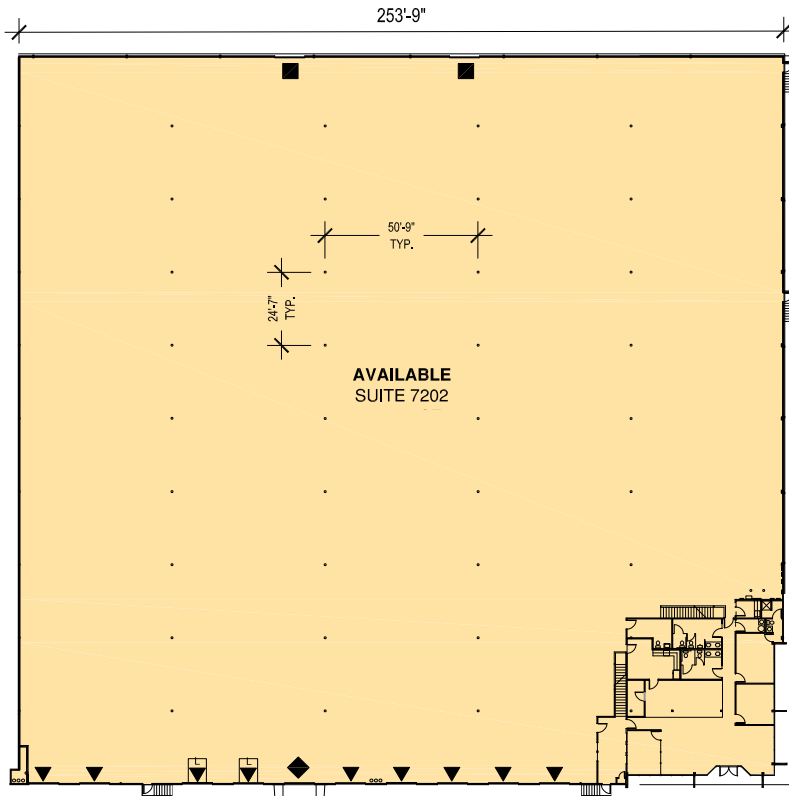
Your single-source service for efficient move-in and operations: [prologisessentials.com](https://www.prologisessentials.com)

62,501 SF

Industrial Space For Lease



Prologis Park Kent 15



Colliers International

Matt McGregor
Matt.McGregor@Colliers.com
ph +1 206 624 7401
cell +1 206 851 4616
601 Union Street
Suite 5300
Seattle, WA 98101 USA

Bill Condon
Bill.Condon@Colliers.com
ph +1 206 624 7400
cell +1 206 235 9732
601 Union Street
Suite 5300
Seattle, WA 98101 USA

Prologis

Lucca Merlino
lmerlino@prologis.com
ph +1 206 414 7621
cell +1 206 498 6511
33930 Weyerhaeuser Way
Suite 100
Federal Way, WA 98001 USA