

AIRWEST BOULEVARD

2800 AIRWEST BOULEVARD
PLAINFIELD, IN 46231

TOTAL BUILDING FOOTPRINT: 442,127 SF

AVAILABLE OFFICE: 1,120 SF







AVAILABLE WAREHOUSE: 68,873 SF

AVAILABLE TOTAL: 69,993 SF

DOCK DOORS W/ LEVELERS: 7

30' CLEAR HEIGHT
FULLY SPRINKLERED
AMPLE AUTO PARKING SPACES

LEGEND:

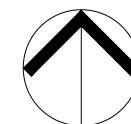
-  DOCK POSITION W/ LEVELER
-  DOCK POSITION
-  DRIVE-IN DOOR
-  AVAILABLE AREA
-  LAND
-  WATER



6650 TELECOM DRIVE SUITE 250,

INDIANAPOLIS, IN 46278

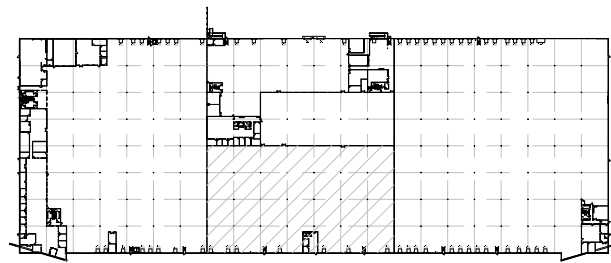
TELEPHONE (317) 228.6200



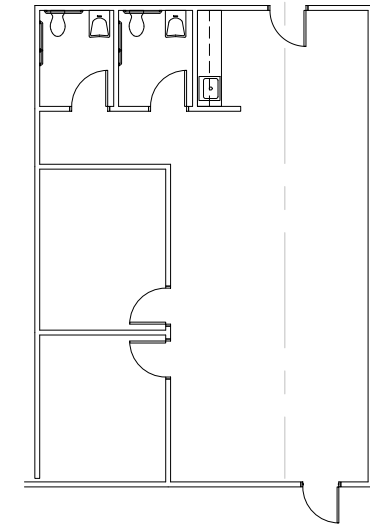
schott design

www.schottdesign.com

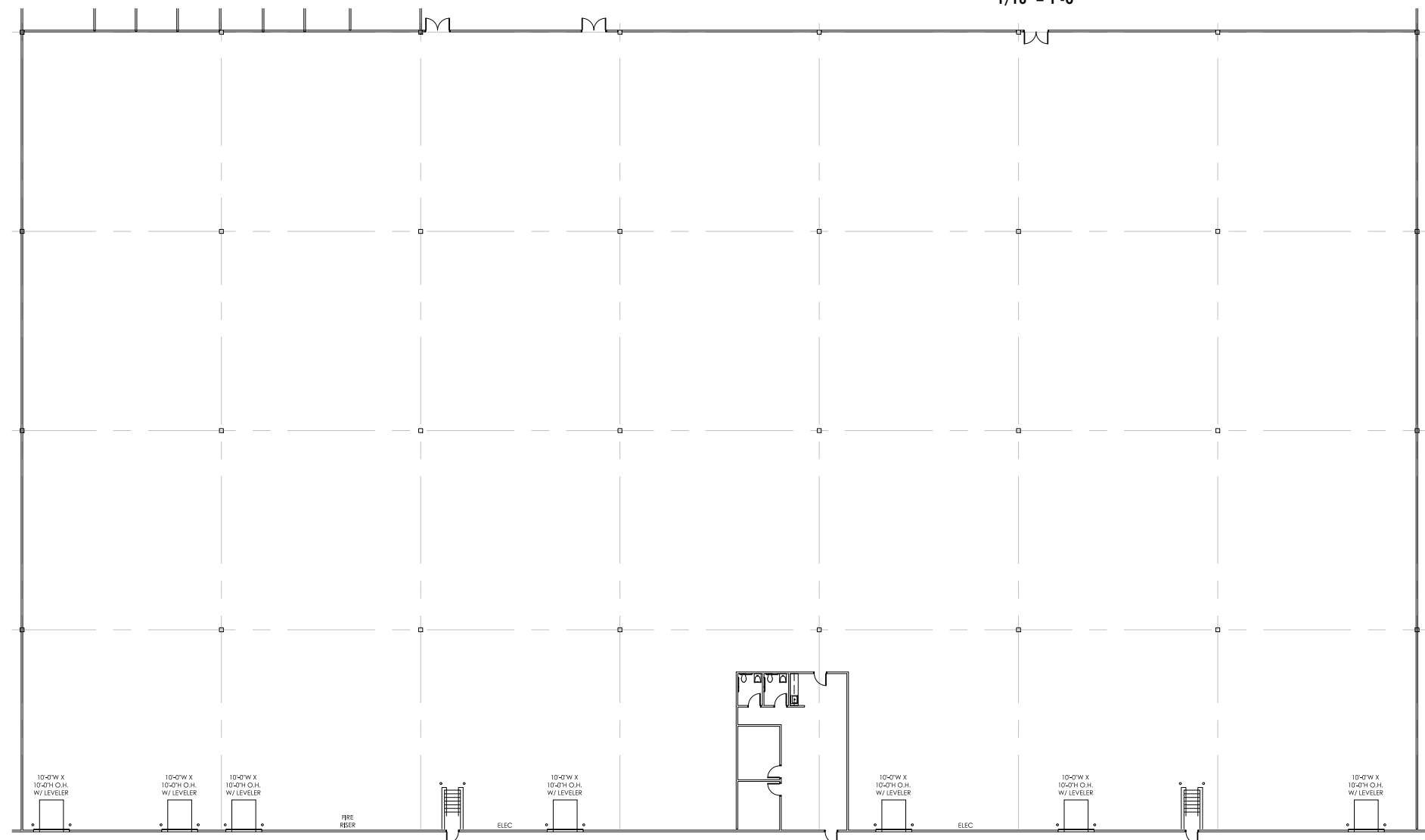
DATE: 02.21.19



KEY PLAN
NOT TO SCALE



AVAILABLE SUITE 2806 - OFFICE PLAN
1/16" = 1'-0"



AVAILABLE SUITE 2806 - LEASE PLAN

NOT TO SCALE

NOTE: THIS CONCEPTUAL PLAN IS FOR MARKETING PURPOSES ONLY AND HAS BEEN PREPARED BASED ON PRELIMINARY AVAILABLE SITE INFORMATION DEEMED RELIABLE. ALL DIMENSION AREA CALCULATIONS ARE SUBJECT TO VERIFICATION BY A PROFESSIONAL ENGINEER FOR COMPLIANCE WITH ALL FEDERAL, STATE AND LOCAL REGULATIONS.