

# 23,200 SF

## Industrial Space For Lease



### Upland Distribution Center I, #7

14309 East 35<sup>th</sup> Place  
Aurora, CO 80011 USA

#### LOCATION

- Easy access to I-70 & I-225
- Close proximity to I-270 & I-76
- 10 miles to Denver International Airport
- 14 miles to Downtown Denver
- Prologis owned and operated

#### FACILITY

- 23,200 SF, 7,068 SF office
- 6 Dock-hi doors
- 1 Drive-in door
- 24' Clear height
- ESFR fire sprinkler

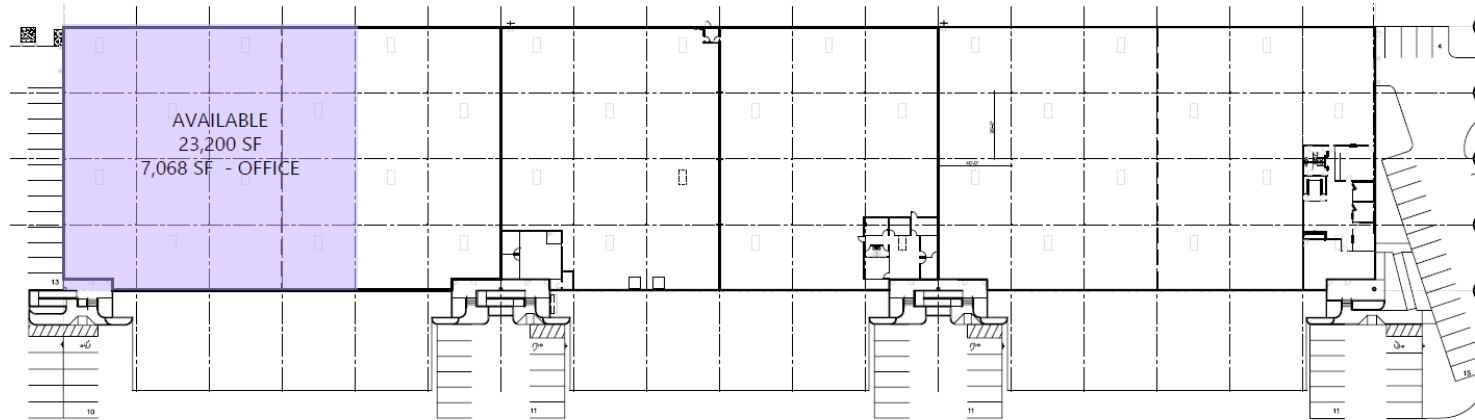
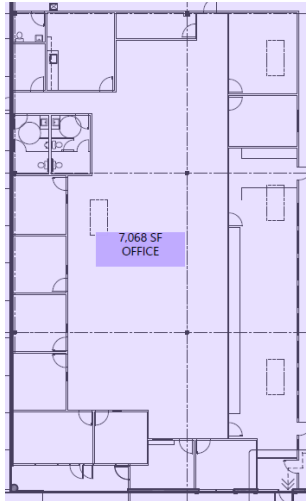
#### ADVANTAGES AND AMENITIES

- Master plan business park
- Close proximity to restaurants and hotels



# 23,200 SF

## Industrial Space For Lease



### Prologis

**Wayne E. Barrett**  
wbarrett@prologis.com  
ph +1 303 567 5688  
cell +1 720 320 1760  
1800 Wazee Street  
Suite 500  
Denver, CO 80202 USA