

PROLOGIS PARK  
**WESTERN AVENUE** Park Royal  
DC1

**82,723 SQ FT**  
REFURB TO SUIT OPPORTUNITY  
AVAILABLE NOW

**2 SECURE SELF  
CONTAINED YARDS**

London W3 0BZ  
[///drops.harp.cover](http://drops.harp.cover)



A40

# IT ALL HAPPENS HERE

The place to be for ambitious businesses, Western Avenue is a connected community of commerce in the heart of Park Royal.



## PRIME HQ OPPORTUNITY

Western Avenue is the newest addition to Park Royal by Prologis, London's premier urban logistics hub. With direct frontage to the A40, DC1 captures the attention of thousands daily, making it the perfect HQ location for your business. Ideally positioned to tap into a skilled workforce and a thriving customer base, it offers unrivalled connectivity and exposure to drive your business forward.


Supported by Prologis' world-class amenities, services, and expertise, this last-mile location is the place to be for all your business needs – big or small.

**PARK ROYAL**  
BY PROLOGIS

 **1,013**  
businesses across  
12 different industries

 **3.9m**  
population within  
30 minute drive time

 **12.8m**  
population within  
60 minute travel time  
(using public transport)

 **4,648**  
vehicle movements  
per hour on A40

SPECIFICATION

# READY FOR BUSINESS

With a double yard and ample car parking, this unit is built for operational ease and flexibility with the potential for 360 circulation.

## ACCOMMODATION

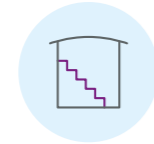
### DC1

Warehouse	57,481 sq ft	(5,340 sq m)
First floor office	25,242 sq ft	(2,345 sq m)
<b>Total</b>	<b>82,723 sq ft</b>	<b>(7,685 sq m)</b>
Optional mezzanine	30,500 sq ft*	(2,834 sq m)*
<b>Total (incl. mezzanine)</b>	<b>113,223 sq ft*</b>	<b>(10,519 sq m)*</b>

## SPECIFICATION

The units have been constructed to a high standard and are of steel portal frame construction with pitched roofs and profile sheet cladding to the elevations.

The premises benefit from:



### FLEXIBLE MEZZANINE SPACE

An optional 30,500 sq ft available\*



### AMPLE PARKING

145 car parking spaces\*



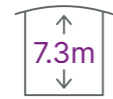
### CAR PARKING RATIO

Excellent car parking ratio of 1:653\*\*



### LARGE YARDS

2 secure yards totalling 38,000 sq ft\*



7.3m eaves



800kVA power



EV charging points



LED lighting to offices and warehouse



Target EPC A



4 canopied level access doors



Grade A office space



Opportunity for PV solar panels

\*Approximate measurement

\*\*DC1 has a car parking ratio of 1:653, compared with a typical ratio of 1:1250 for warehouses in the South East. All other available buildings at Western Avenue have a ratio of at least 1:1500.

# FLEXIBILITY OF YARD USE - FLEX TO MEET YOUR NEEDS

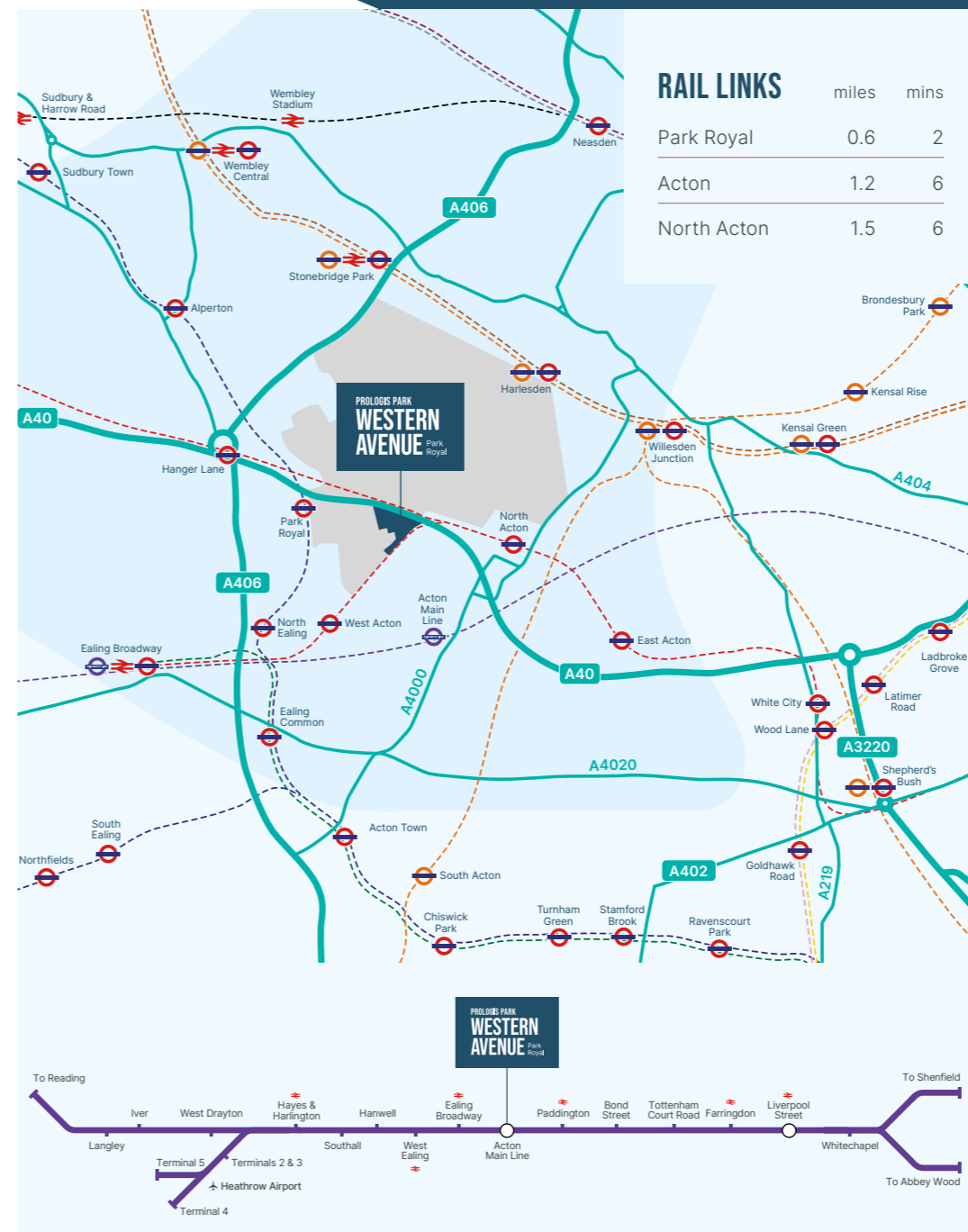


CONNECTIONS

# THIS WAY FOR CONNECTIVITY

Western Avenue Business Park is ideally situated just off of Western Avenue (A40), which provides quick and easy links into Central London, Heathrow Airport, M25 and motorway network.

With Harlesden, Willesden Junction, Park Royal and North Acton stations all within walking distance, Western Avenue has direct access to overground rail services and is well served by the Bakerloo, Central and Piccadilly Underground lines. Local bus services also run to nearby Central Way and Abbey Road stops.



# SOMETHING FOR EVERYONE

We know that people make your business what it is and that attracting and retaining those people is key. Located in one of the UK's most transformational areas, Park Royal is surrounded by leisure, shopping, and entertainment options – from cinemas to retail parks, pubs to restaurants.



# SPACE THAT WORKS FOR YOU

Imagine a warehouse that can adapt to your business needs. DC1 features a flexible mezzanine that can be transformed into additional storage, bespoke office areas, wellbeing zones, or any amenity you need.

With the potential to also convert the car park into additional yard space - this space can be re-designed with flexibility in mind. Our 'refurb to suit' approach means that by engaging early, the refurbishment can be tailored to support your specific operational requirements, creating a space that truly works for you.



# THE PARKLIFE™ EXPERIENCE



I will be your main point of contact. I am passionate about the customer service we provide and derive real pleasure from watching the businesses on our Parks thrive. My real focus is around understanding our customers' needs and helping them grow within our network.

**MILENA BLAIR**

Real Estate & Customer Experience Manager



From 15 years working with Prologis, I've found them to be extremely engaged and supportive of our ambition to be an employer of choice in the local area. We're in regular contact and have collaborated recently on a full refit of LED lighting and are currently in ongoing discussion about other initiatives to support our ESG commitments. The Prologis team are a real pleasure to work with and we look forward to working closely together for years to come.

Michael Gray, General Manager, Halfords.



On-Site Security



Bus Services



Park Signage



Litter Picking



Snow Clearance / Road Gritting



On-Site Parking Controls



Green Travel Plan



Maintained Park Drainage



Community Liaison



Maintained Landscaping



Customer Estate Meetings



Maintained Private Roads



Shared External Building Clean

For more information on the above services and how you, your business and your employees can benefit, please speak to Milena Blair.

## Your Journey, Powered by Prologis Essentials

Before you move in, Prologis Essentials gives you a confident start. Our experts work with you to design the right layout, source and implement your fit-out, and provide cost clarity – so your warehouse is ready to perform from day one. And we stay with you to optimise operations and help you get the most from your space.

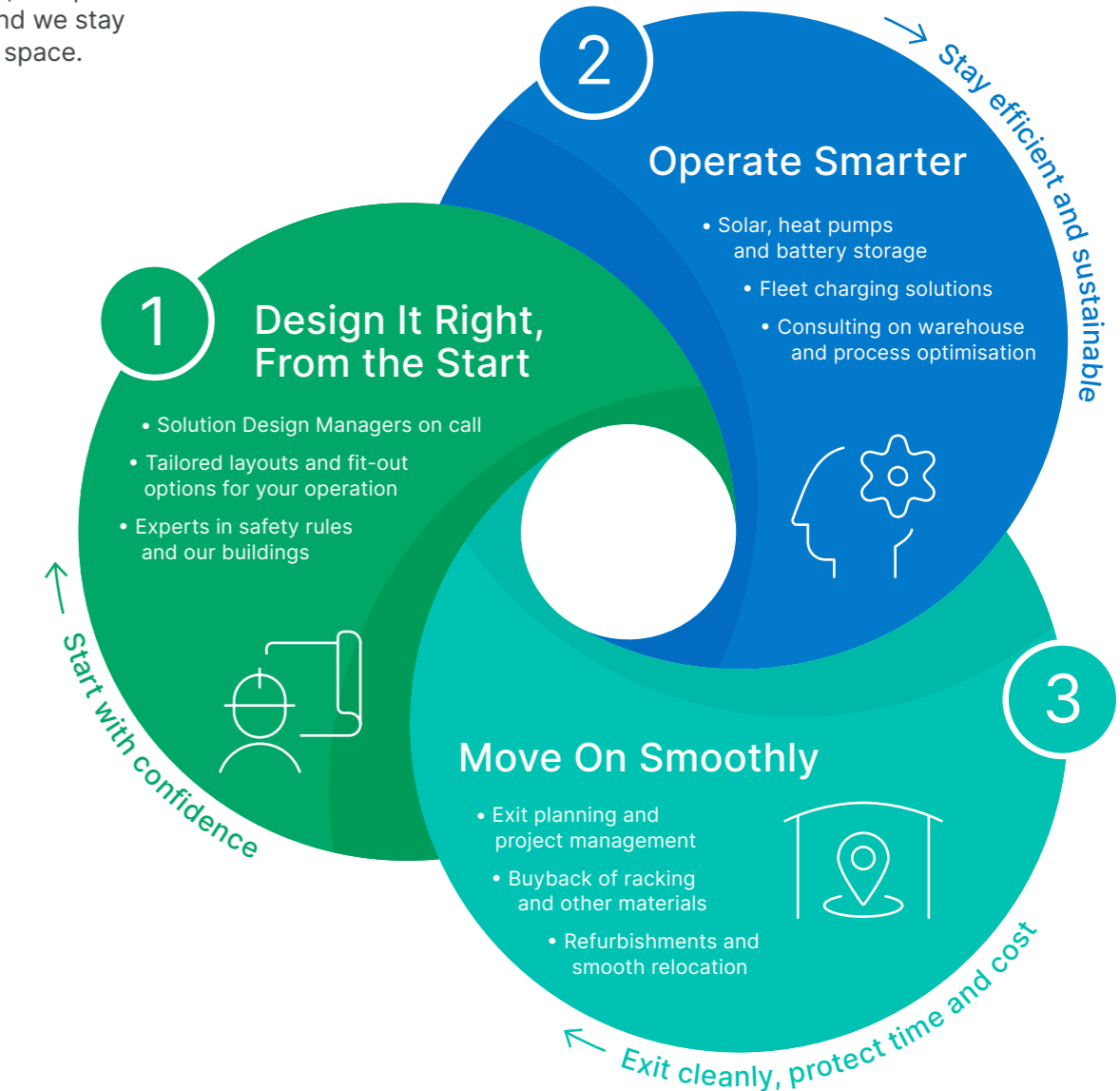
### Why It Matters

- **Operational Expertise:** Tailored layout and intralogistics advice, grounded in real experience.
- **Regulatory Know-How:** Fire regulations and permitting managed across markets and countries.
- **Cost Transparency:** A clear view of your options – upfront, phased, or included in rent, with no surprises.

### Meet Your Essentials Solutions Manager

“Leasing a logistics facility with Prologis is just the start of the journey. Prologis Essentials is the first total warehouse solution that helps you run, optimise and grow your business; how, when and wherever you want. We work to remove pain points and help you get up and running as efficiently and as quickly as possible, getting your warehouse from empty to fully equipped in the blink of an eye!”

Danny Bostock



Western Avenue is perfectly located in Park Royal, the premier industrial location for West London, with exceptional connectivity to Central London, Heathrow Airport and the national road network.

## DRIVE TIMES

	miles	mins
M25 / J16	11.8	20
Heathrow Airport	12.6	30
Central London	6.1	25



[PROLOGIS.CO.UK/WESTERNAVENUE](https://prologis.co.uk/westernavenue)

## VIEWINGS

For further information or to arrange a viewing contact the joint letting agents.



Tom Erxleben  
tom.erxleben@cushwake.com  
07710 966 234

Chris Knight  
chris.c.knight@cushwake.com  
07872 822 528



Nick Steens  
nick.steens@savills.com  
07816 184 193

Dominic Whitfield  
dwhitfield@savills.com  
07870 555 936



Maddie Moriarty  
maddie.moriarty@dtre.com  
07545 582 097

Jake Huntley  
jake.huntley@dtre.com  
07765 154 211

## ABOUT PROLOGIS

Prologis is the leading developer and owner of logistics property in the UK and worldwide. We have the expertise, the sites and the in-house funds to deliver high quality buildings that help businesses run as efficiently as possible.

Working collaboratively with our customers, we develop the best property solutions for their operations, both now and for the future. For more information please visit [prologis.co.uk](https://prologis.co.uk)

Conditions under which particulars are issued:

Cushman & Wakefield, Savills and DTRE for themselves and for the vendors or lessors of this property whose agents they give notice that: (i) the particulars are set out as a general outline only for guidance of intended purchasers or lessors, and do not constitute nor constitute part of, an offer or contract; (ii) all descriptions, dimensions, reference to condition and necessary permissions for use and occupation, and other details are given without responsibility and any intending purchasers or tenants should not rely on them as statements or representations of fact but must satisfy themselves by inspection or otherwise as to the correctness of each of them; (iii) no person in the employment of Cushman & Wakefield, Savills and DTRE has any authority to make or give any representation or warranty whatever in relation to this property. Photographs are indicative only. All dimensions are approximate. February 2026

