

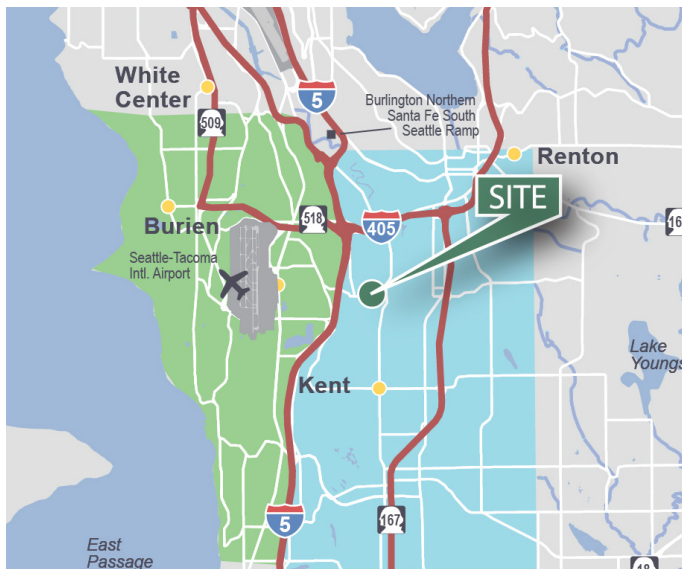
# 18,000 SF

## Industrial Space For Lease



## Prologis Park Tukwila

1127 Andover Park West  
Tukwila, WA 98188 USA



### LOCATION

- Easy access to I-5, I-405 and SR-167
- Within 5 miles of SeaTac Airport

### FACILITY

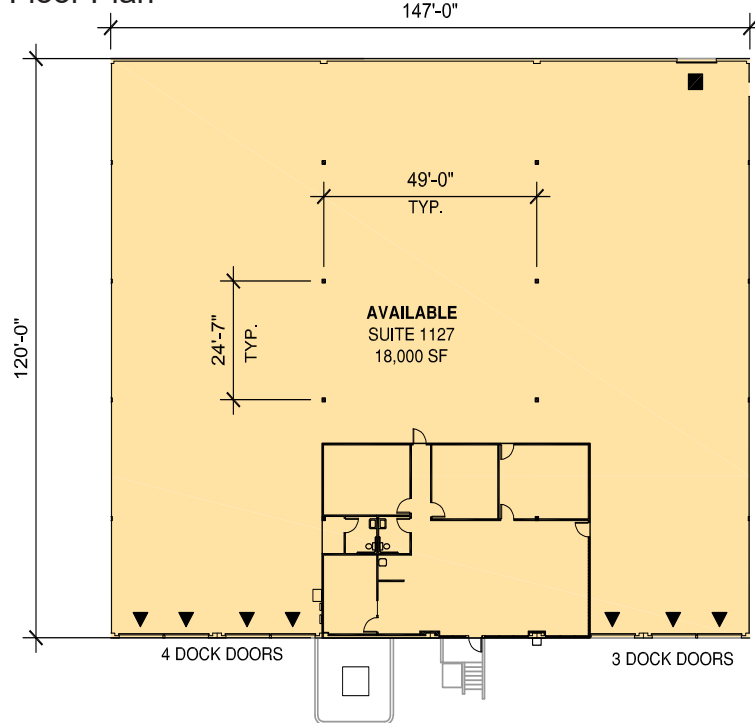
- 18,000 SF total available
- 2,484 SF office space
- 24' clear height
- 49'0" x 24'7" column spacing
- 7 dock high doors
- 1 rail level door
- Available 04/01/2021
- Landlord to upgrade to LED lighting
- Strong corporate image
- Use Prologis Essentials to help with pricing on forklifts and racking

# 18,000 SF

## Industrial Space For Lease



### Floor Plan



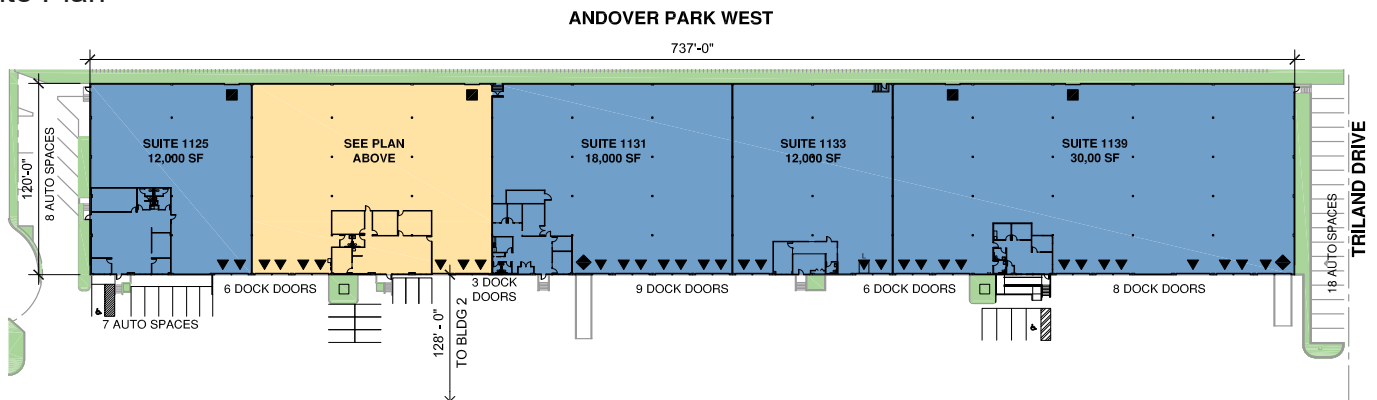
### SUITE 1127

AVAILABLE:	18,000 SF
OFFICE:	2,484 SF
WAREHOUSE:	15,516 SF
DOCK DOORS:	7
RAIL LEVEL DOORS:	1

#### LEGEND:

- ▲ DOCK POSITION
- ▲ DOCK POSITION W/ LEVELER
- △ FUTURE DOCK POSITION
- ◆ DRIVE-IN DOOR
- RAIL LEVEL DOOR

### Site Plan



#### Colliers International

**Matt McGregor**

Matt.McGregor@Colliers.com

ph +1 206 624 7401

cell +1 206 851 4616

601 Union Street

Suite 5300

Seattle, WA 98101 USA

**Bill Condon**

Bill.Condon@Colliers.com

ph +1 206 624 7400

cell +1 206 235 9732

601 Union Street

Suite 5300

Seattle, WA 98101 USA

#### Prologis

**Lucca Merlino**

lmerlino@prologis.com

ph +1 206 414 7621

cell +1 206 498 6511

12720 Gateway Drive

Suite 110

Tukwila, WA 98168 USA