

# ±303,150 SF

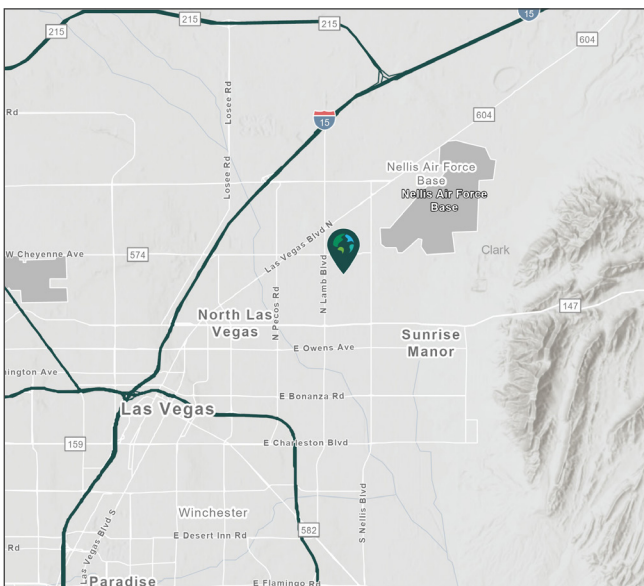
Industrial Space For Lease



## Prologis Sunrise Industrial Park 7



2880 N. Lamb Boulevard  
Las Vegas, NV 89115 USA



### LOCATION

- Marion Drive just south of Cheyenne Avenue
- Convenient access to I-15 via Cheyenne Avenue Interchange
- Zoned: Industrial Light (IL)
- North Las Vegas submarket
- After-hours roaming security

### FACILITY

- ±303,150 SF Total Building SF
- ±6,870 SF Total Office
- 31' Minimum Clear Height
- 62 Dock Doors
- 24 Vehicle Restraints (Dock Locks)
- 38 Edge of Dock Levelers
- 5 Grade Level Doors
- ±286' Building Depth
- ±44' x ±56' Column Spacing
- Power: 4,000A/3PH/277/480V, 4W
- Evaporative Cooled Warehouse
- ESFR Fire Sprinkler System
- Energy Efficient LED Warehouse Lighting

**Your single-source service for efficient move-in and operations: [prologisessentials.com](http://prologisessentials.com)**

# ±303,150 SF

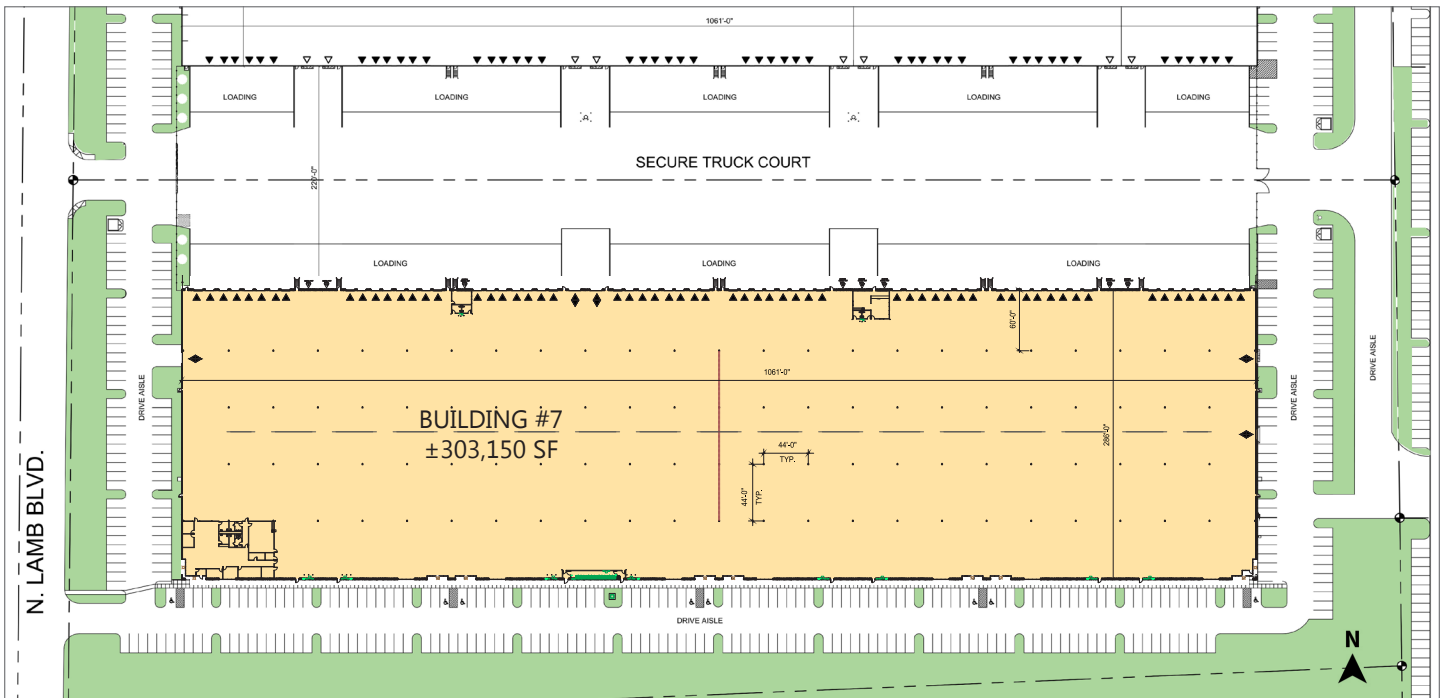
## Industrial Space For Lease



# Prologis Sunrise Industrial Park 7

 = Available

*For illustration purposes only. Not to scale.*



 = Dock High Door     = Grade Level Door



Colliers  
**Chris Lane, SIOR, CCIM**  
Executive Vice President  
chris.lane@colliers.com  
ph +1 702 836 3728  
cell +1 702 808 4956  
6795 Agilysys Way  
Suite 210  
Las Vegas, NV 89113 USA  
License # NV-S.0166896

Colliers  
**Jerry Doty, SIOR**  
Executive Vice President  
jerry.doty@colliers.com  
ph +1 702 836 3735  
cell +1 702 408 5876  
6795 Agilysys Way  
Suite 210  
Las Vegas, NV 89113 USA  
License # NV-S.0172045

Colliers  
**Paul Sweetland, SIOR**  
Vice President  
paul.sweetland@colliers.com  
ph +1 702 836 3750  
cell +1 602 499 1272  
6795 Agilysys Way  
Suite 210  
Las Vegas, NV 89113 USA  
License # NV-S.0043604

Prologis  
**Renee Carroll**  
Senior Leasing Manager  
rcarroll@prologis.com  
ph +1 702 891 9503  
cell +1 702 844 5282  
3883 Howard Hughes Pkwy  
Suite 850  
Las Vegas, NV 89169 USA

# ±303,150 SF

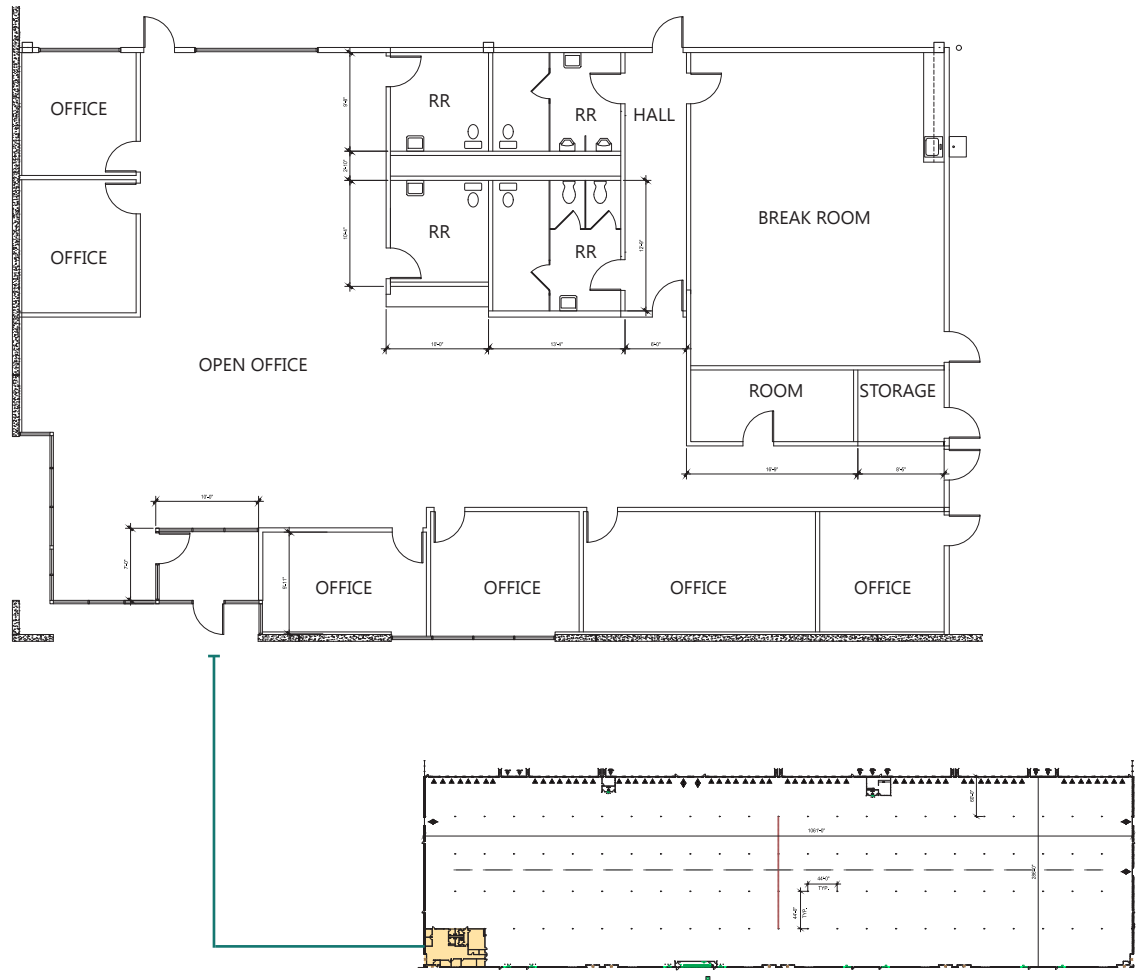
Industrial Space For Lease



## Prologis Sunrise Industrial Park 7

### DETAILED OFFICE PLAN

*For illustration purposes only. Not to scale.*



Colliers  
**Chris Lane, SIOR, CCIM**  
Executive Vice President  
chris.lane@colliers.com  
ph +1 702 836 3728  
cell +1 702 808 4956  
6795 Agilysys Way  
Suite 210  
Las Vegas, NV 89113 USA  
License # NV-S.0166896

Colliers  
**Jerry Doty, SIOR**  
Executive Vice President  
jerry.doty@colliers.com  
ph +1 702 836 3735  
cell +1 702 408 5876  
6795 Agilysys Way  
Suite 210  
Las Vegas, NV 89113 USA  
License # NV-S.0172045

Colliers  
**Paul Sweetland, SIOR**  
Vice President  
paul.sweetland@colliers.com  
ph +1 702 836 3750  
cell +1 602 499 1272  
6795 Agilysys Way  
Suite 210  
Las Vegas, NV 89113 USA  
License # NV-S.0043604

Prologis  
**Renee Carroll**  
Senior Leasing Manager  
rcarroll@prologis.com  
ph +1 702 891 9503  
cell +1 702 844 5282  
3883 Howard Hughes Pkwy  
Suite 850  
Las Vegas, NV 89169 USA

# ±303,150 SF




Industrial Space For Lease

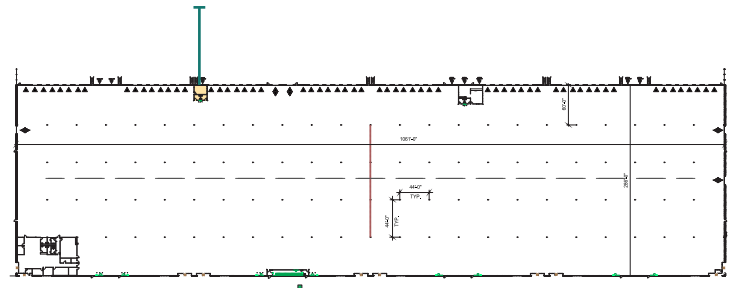
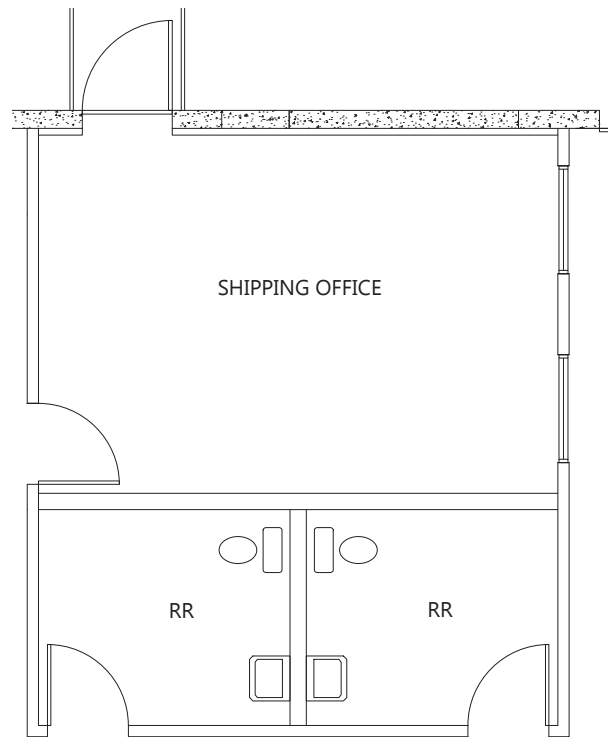


## Prologis Sunrise Industrial Park 7

### DETAILED OFFICE PLAN

*For illustration purposes only. Not to scale.*

-  = Available
-  = Dock High Door
-  = Grade Level Door



Colliers  
**Chris Lane, SIOR, CCIM**  
Executive Vice President  
chris.lane@colliers.com  
ph +1 702 836 3728  
cell +1 702 808 4956  
6795 Agilysys Way  
Suite 210  
Las Vegas, NV 89113 USA  
License # NV-S.0166896

Colliers  
**Jerry Doty, SIOR**  
Executive Vice President  
jerry.doty@colliers.com  
ph +1 702 836 3735  
cell +1 702 408 5876  
6795 Agilysys Way  
Suite 210  
Las Vegas, NV 89113 USA  
License # NV-S.0172045

Colliers  
**Paul Sweetland, SIOR**  
Vice President  
paul.sweetland@colliers.com  
ph +1 702 836 3750  
cell +1 602 499 1272  
6795 Agilysys Way  
Suite 210  
Las Vegas, NV 89113 USA  
License # NV-S.0043604

Prologis  
**Renee Carroll**  
Senior Leasing Manager  
rcarroll@prologis.com  
ph +1 702 891 9503  
cell +1 702 844 5282  
3883 Howard Hughes Pkwy  
Suite 850  
Las Vegas, NV 89169 USA