

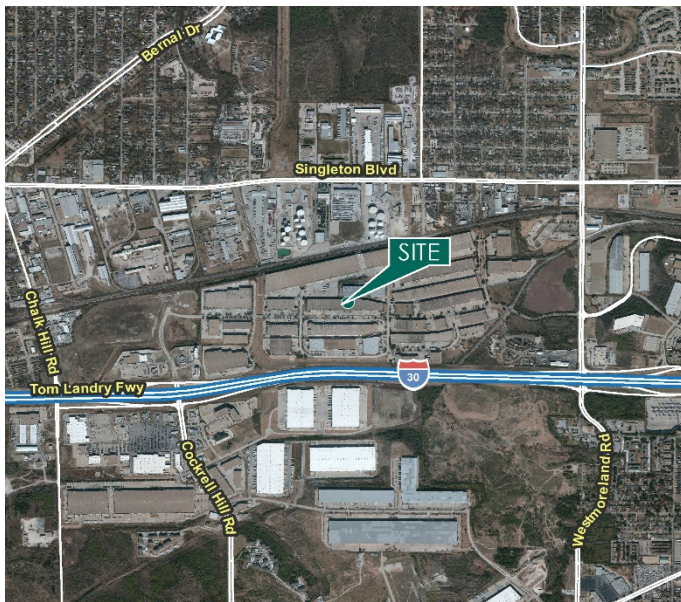
# 50,390 SF

## Industrial Space For Lease



## Prologis Pinnacle Dist. Ctr.

3875 LaReunion Parkway  
Dallas, TX 75212 USA



### LOCATION

- Easy access to major highways including I-35E (0.3 mi.), TX-183 (0.4 mi.) and TX-12 (2.7 mi.)

### FACILITY

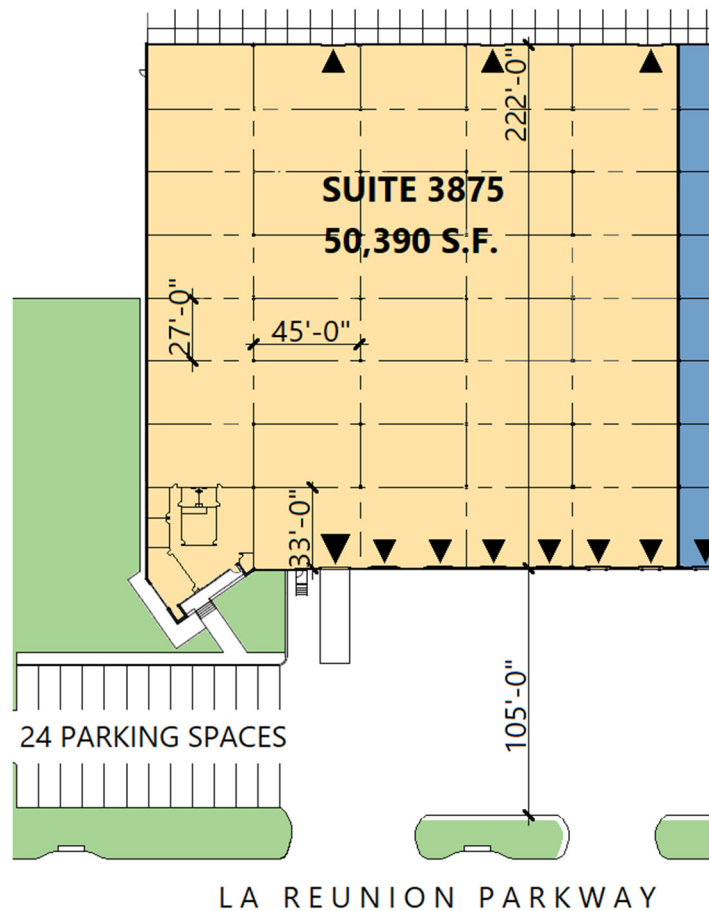
- 50,390 sf available
- 1,478 sf office
- 26' clear height
- 27' x 45' column spacing
- 6 overhead dock doors
- 1 dock door with ramp
- 3 rail doors
- Fully sprinklered

### ADVANTAGES AND AMENITIES

- Rail served
- End cap space

# 50,390 SF

## Industrial Space For Lease



### Prologis

**Whitney Williamson**

wwilliamson@prologis.com

ph +1 972 884 9244

cell +1 817 781 5186

2021 McKinney Avenue

Suite 1050

Dallas, TX 75201 USA