



Prologis Buford Distribution Center 2

950 Sherwin Parkway

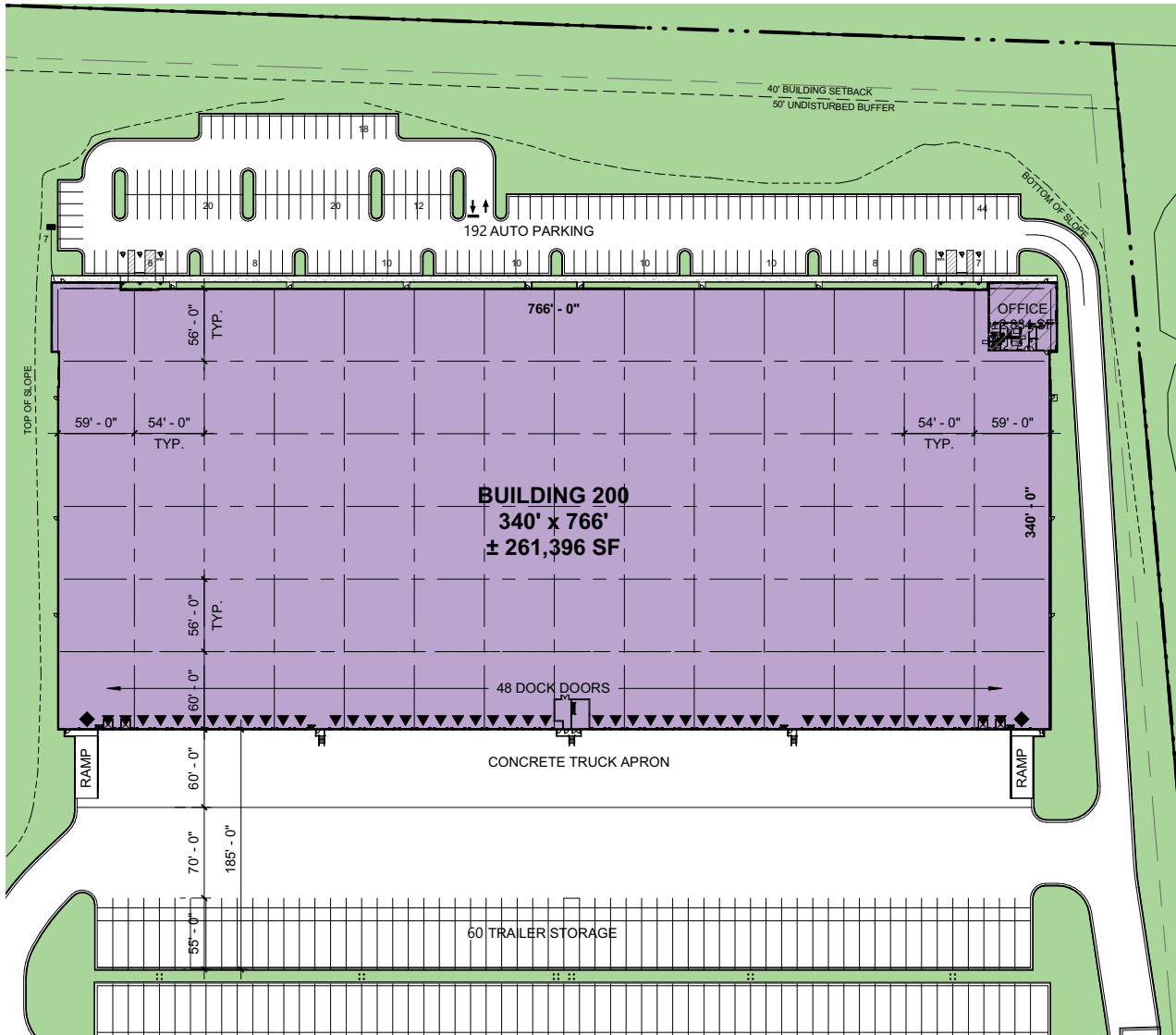
Buford, GA 30518



Prologis Buford Distribution Center 2

Buford, GA

Building Site Plan



Property Description

- Up to 261,396 SF available on 22.43 acres
- Divisible to 100,000 SF
- 2,835 SF office
- 36' minimum clear height
- Forty eight (48) dock-high doors - 9' x 10'
 - Twenty one (21) 7' x 8' 40,000 lb dock levelers
- Two (2) 12' x 16' drive-in doors
- One hundred ninety two (192) automobile parking stalls
- Sixty (60) trailer parking stalls
- 340' x 766' building dimensions
- 54' W x 56' D (typical) column spacing with 60' D loading bays
- Power: 480 volts, 2,000 amps
- 185' deep concrete truck court
- LED lighting
- ESFR sprinkler system
- 7" thick steel fiber floor slab, 4,000 PSI
- Internally drained, 60-mil TPO roof with R-20 insulation
- Reduced joint slab design with fewer joints - 108' x 112' grid

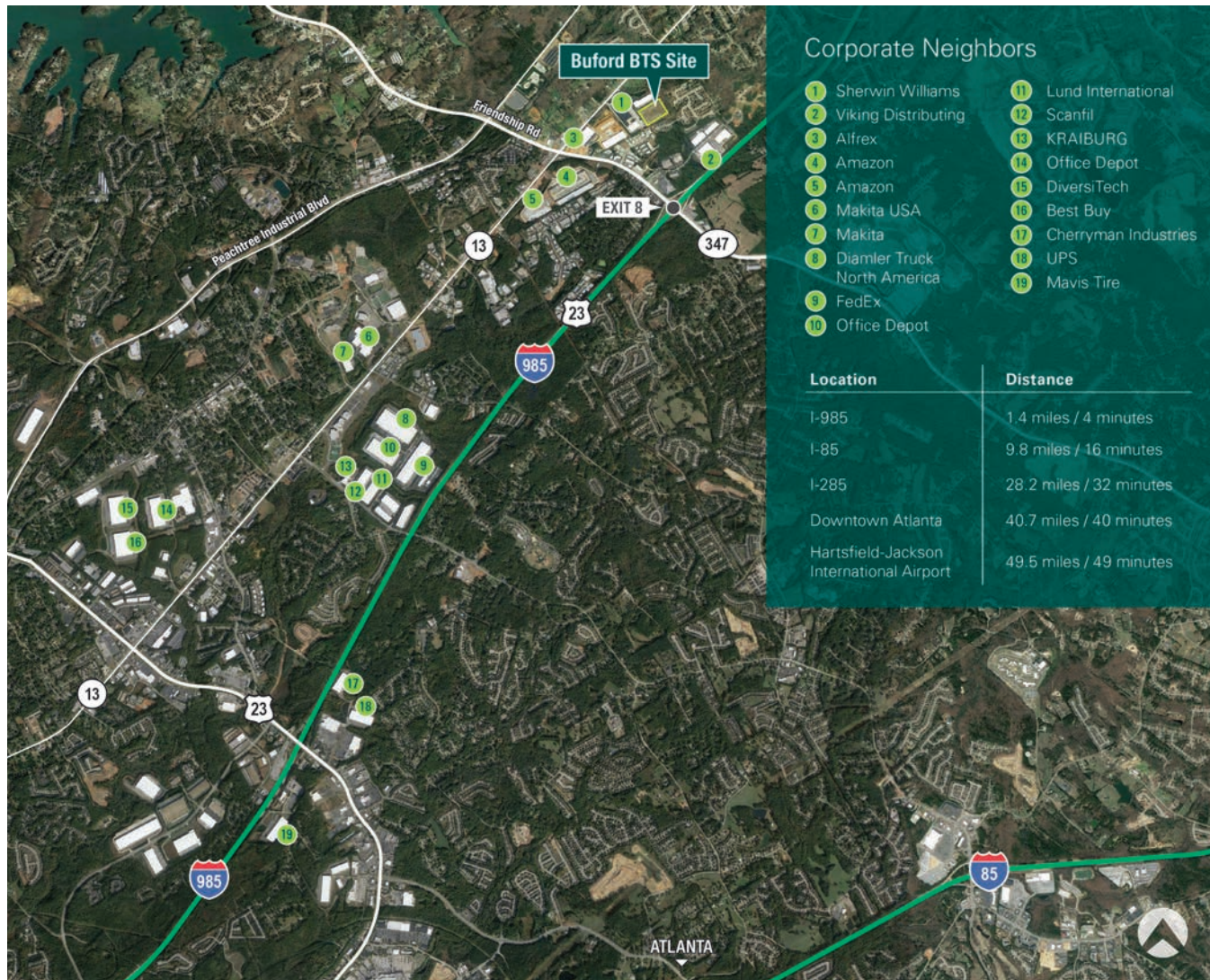
Advantages and Amenities

- Fast, cost-effective forklift and racking sourcing through [Prologis Essentials](#)

Prologis Buford Distribution Center 2

Buford, GA

Corporate Neighbors



Interstate

- Located 1.4 miles from Interstate 985
- Located 9.8 miles from Interstate 85
- Located 28.2 miles from Interstate 285

Air

- 49.5 miles to Hartsfield-Jackson Atlanta International Airport

Intermodal

- 60 miles to Norfolk Southern Intermodal in Austell
- 63 miles to CSX Atlanta Intermodal in Fairburn

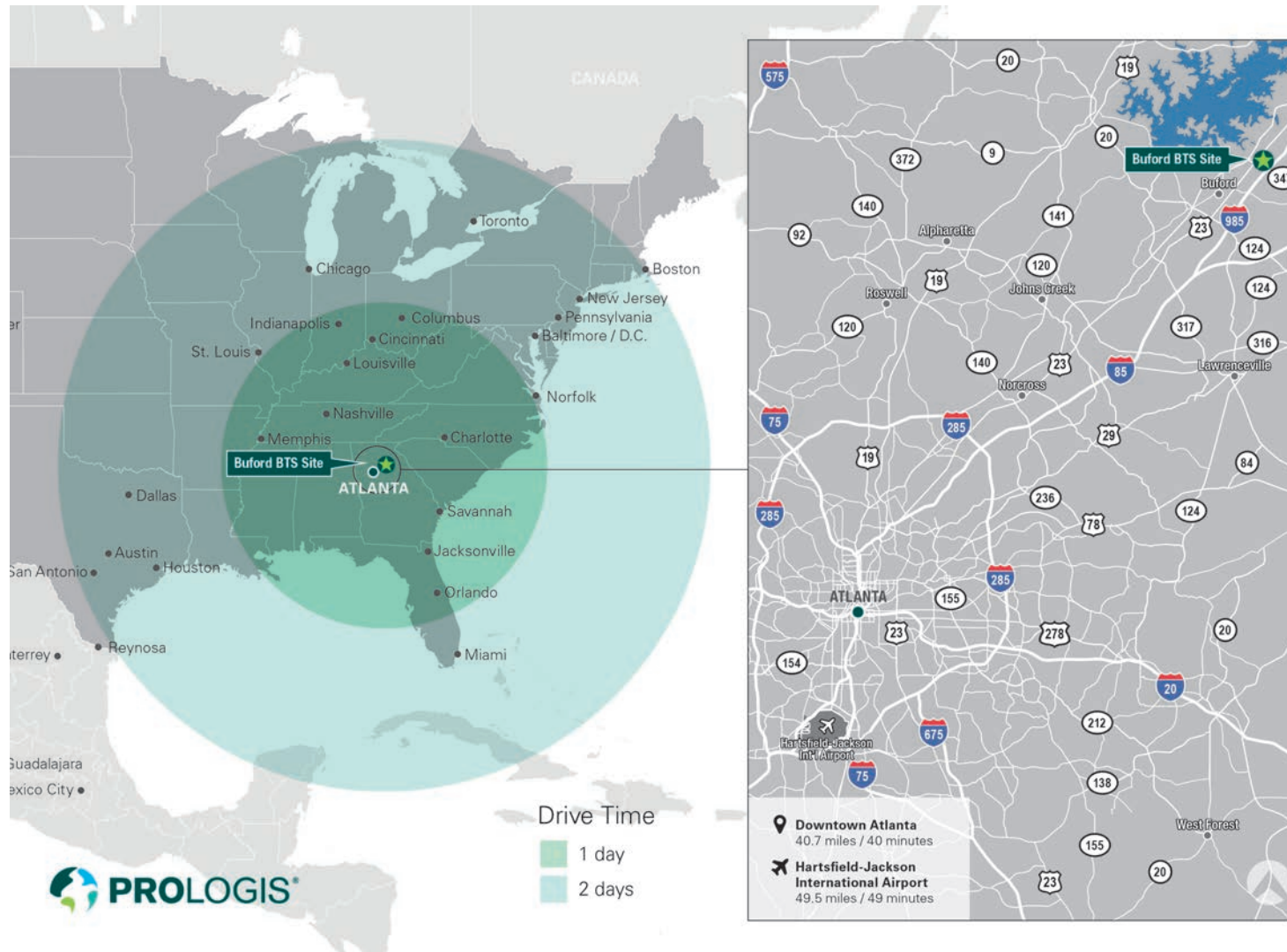
Hubs

- 27 miles to UPS Hub in Doraville
- 27 miles to FedEx Hub in Norcross

Port

- 245 miles to Port of Savannah

Driving Distances



JLL

Ryan Hoyt
ryan.hoyt@am.jll.com
+1 404 995 2090

Reed Davis
reed.davis@am.jll.com
+1 404 995 2227

Prologis

Rachel Miller
rmiller@prologis.com
+1 404 760 7260

www.prologis.com | NYSE: PLD
Twitter: @Prologis

Prologis is the leading owner, operator and developer of industrial logistics real estate with approximately 750 million square feet owned and under management in 20 countries on four continents.

