

# 18,440 SF

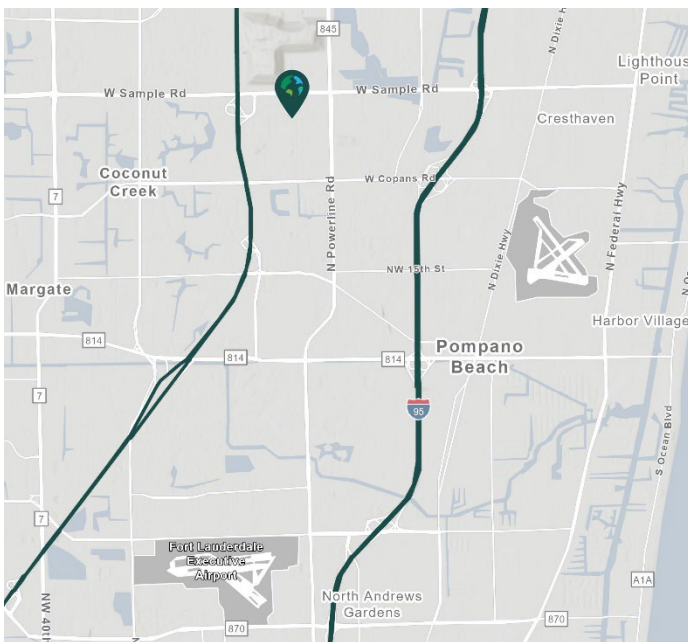
Industrial Space For Lease



## Prologis Pompano Park 1



3200 NW 27<sup>th</sup> Avenue  
Pompano Beach, FL 33069 USA



### LOCATION

- Located on the east side of NW 27<sup>th</sup> Avenue (Blount Road), between Copans Road and Sample Road
- Strategically located between Interstate 95 and the Florida Turnpike

### FACILITY

- Suite 106
- 81,692 SF total building size
- 18,440 SF
- 6 dock high doors
- 2,107 SF Office
- 30' clear ceiling height
- ESFR sprinkler system
- 170' truck court depth
- 84 total parking stalls
- 45' x 50' typical column spacing
- Available October 1, 2024

### ADVANTAGES AND AMENITIES

- Prologis Clear Lease<sup>®</sup> - Know your lease expenses and capital cost with greater certainty

Your single-source service for efficient move-in and operations: [prologisessentials.com](https://www.prologisessentials.com)



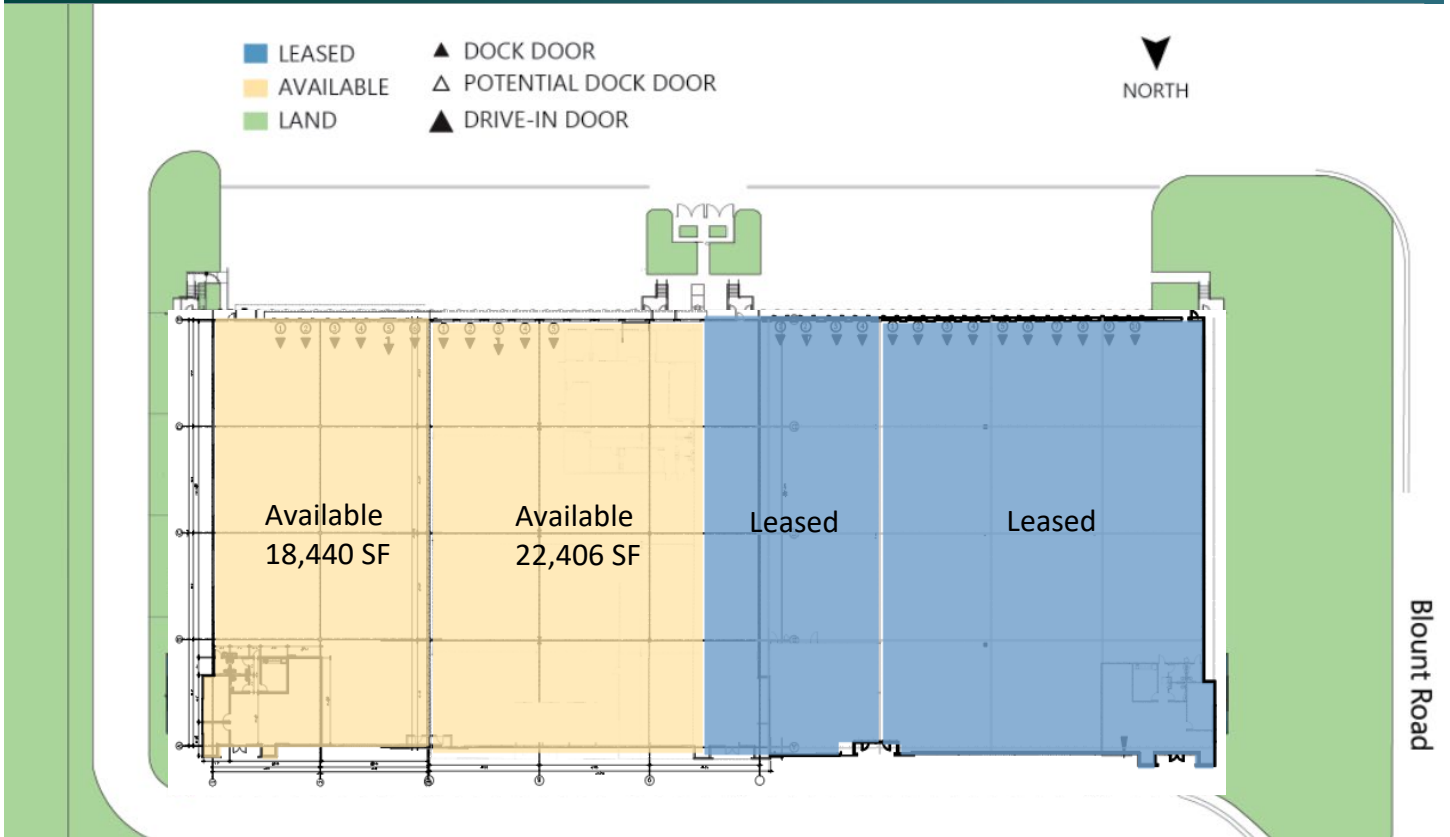
Scan the QR code for more info!

# 18,440 SF

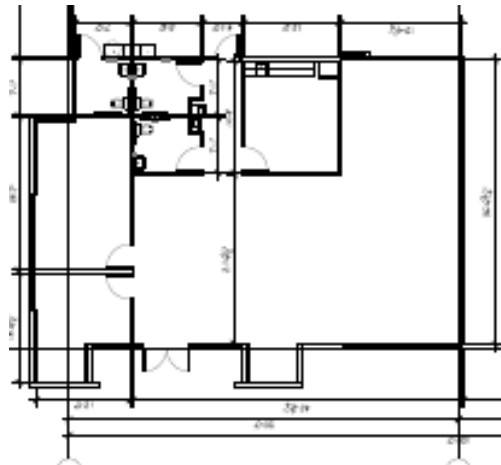
Industrial Space For Lease



## Prologis Pompano Park 1



2,107 SF Office



Chris Metzger, SIOR  
chris.metzger@cushwake.com  
ph +1 954 771 0800  
cell +1 954 415 9155  
225 NW Mizner Boulevard  
Suite 300  
Boca Raton, FL 33432 USA

### Prologis

Ashley McMullen  
amcmullen@prologis.com  
ph +1 954 316 1778  
cell +1 954 909 3022  
201 East Las Olas Boulevard  
Suite 1550  
Fort Lauderdale, FL 33301 USA