

# 2,005,640 SF

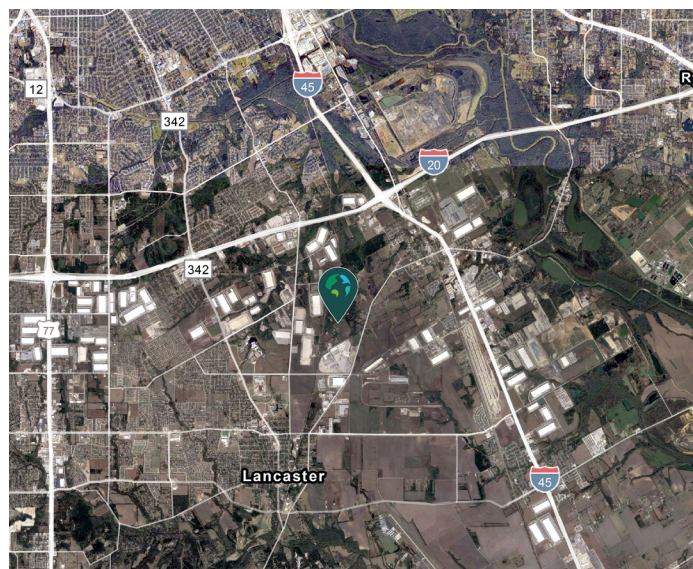
Industrial Space For Lease



## Prologis South Dallas



5001 Witt Road  
Dallas, TX 75241 USA



### LOCATION

- Located in the South Dallas submarket with access to I-20, I-30, and I-45

### FACILITY

- Flexible building configuration
- Substation adjacent to the property
- Building 1 - 1,416,360 sf
  - 244 (9' x 10') dock doors
  - 4 (12' x 14') dock doors with ramp
  - 701 auto parking spaces
  - 356 trailer parking spaces
- Building 2 - 589,280 sf
  - 90 (9' x 10') dock doors
  - 4 (12' x 14') dock doors with ramp
  - 535 auto parking spaces
  - 136 trailer parking spaces

### ADVANTAGES AND AMENITIES

- Access to the [Prologis Essentials](#) platform, which includes:
  - [Operations Essentials](#)
  - [Energy + Sustainability Essentials](#)
  - [Mobility Essentials](#)
  - [Workforce Essentials](#)

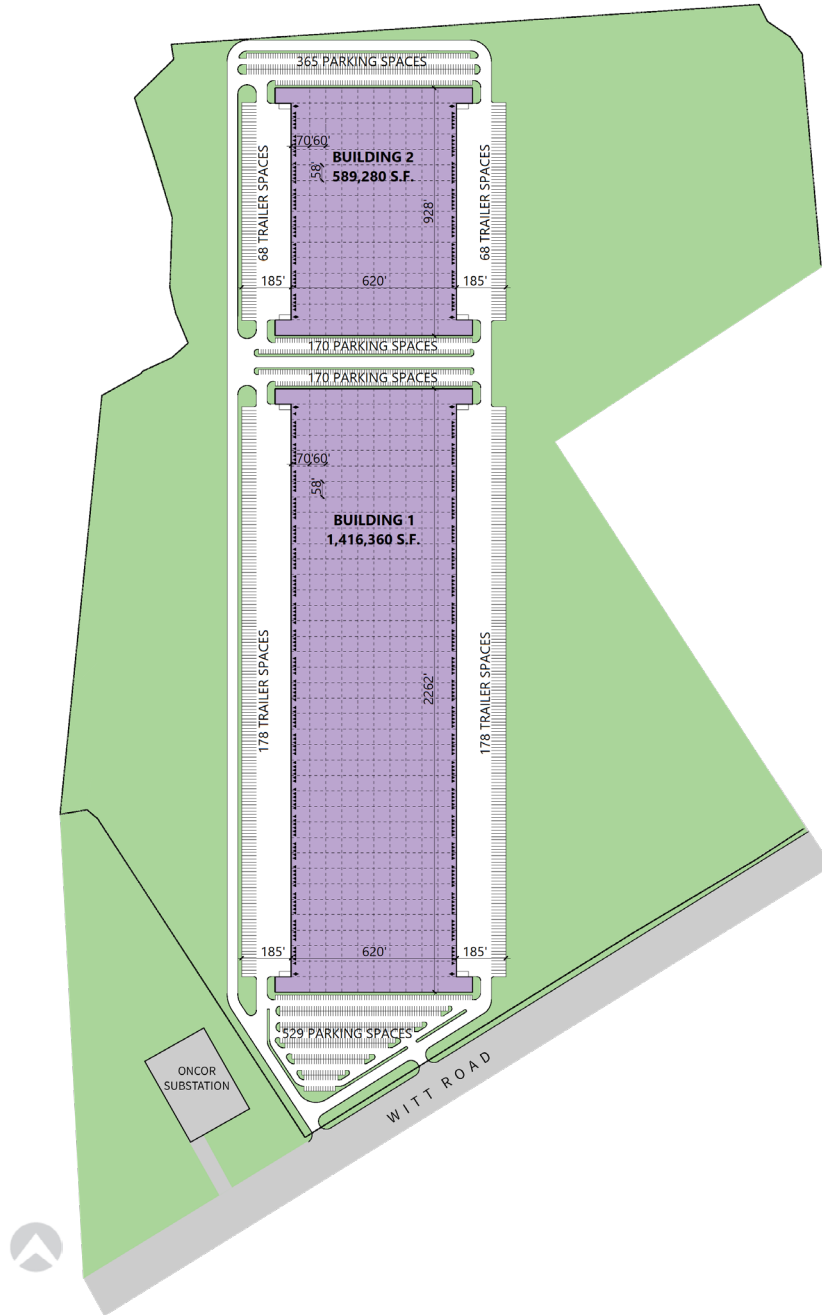
**Prologis Essentials: your single-source service for efficient move-in and operations at [prologisessentials.com](https://prologisessentials.com)**

# 2,005,640 SF

Industrial Space For Lease



## Prologis South Dallas



### JLL

Craig Jones, SIOR  
craig.jones@jll.com  
ph +1 214 438 6125  
cell +1 214 914 4647  
2401 Cedar Springs Road  
Suite 100  
Dallas, TX 75201 USA

### JLL

Randy Touchstone  
randy.touchstone@jll.com  
ph +1 214 438 1533  
cell +1 214 236 6676  
2401 Cedar Springs Road  
Suite 100  
Dallas, TX 75201 USA

### Prologis

Kathleen Isola  
kisola@prologis.com  
ph +1 972 884 9202  
cell +1 214 709 1405  
2021 McKinney Avenue  
Suite 1050  
Dallas, TX 75201 USA