

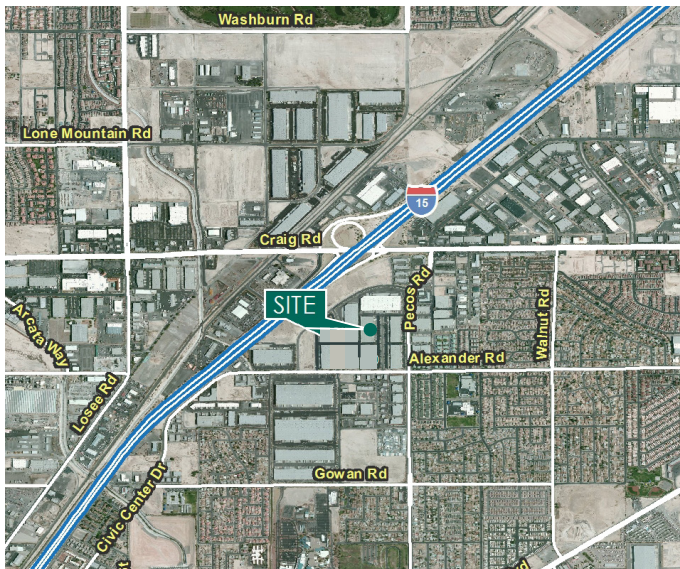
±38,400 SF

Industrial Space For Lease



Prologis Las Vegas Corporate Center - Building 4

4151 Market Center Drive, Suite 403
North Las Vegas, NV 89030 USA



LOCATION

- Convenient Freeway Access to I-15 via Craig Road
- Zoned Industrial: M-2 (North Las Vegas Jurisdiction)

FACILITY

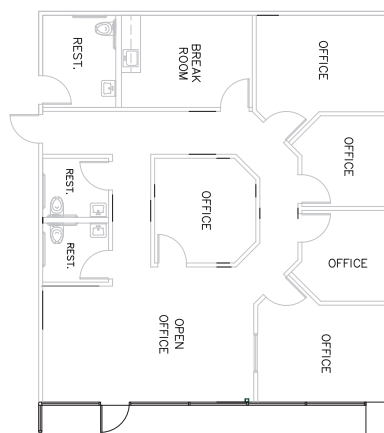
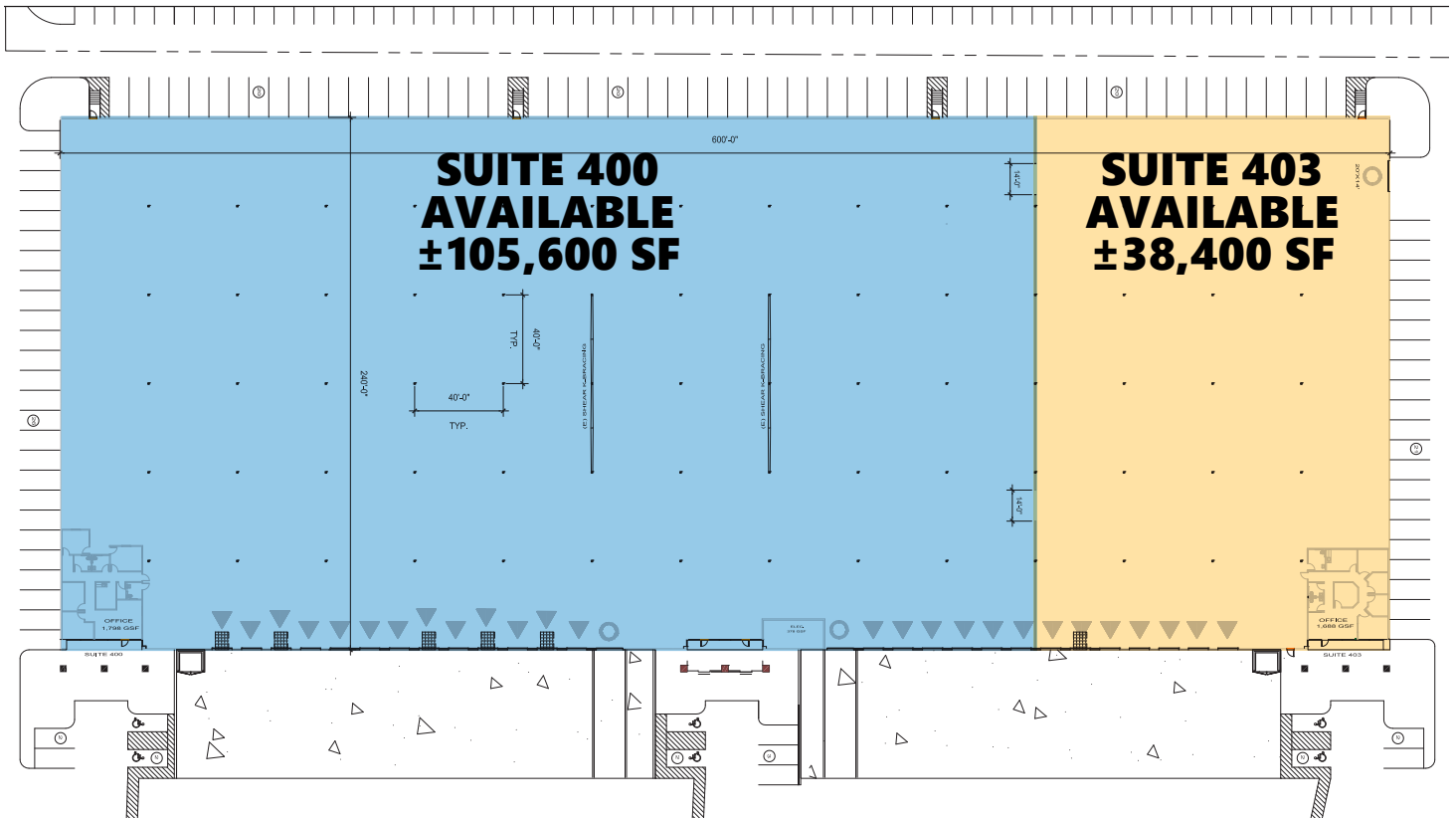
- Total Building Square Footage - ±144,000 SF
- Total Available Square Footage - ±38,400 SF
- ±1,688 SF Existing Office Space
- Seven (7) Dock High Loading Doors
- One (1) Oversized Drive-In Door 14'x20'
- ESRF Fire Sprinkler System
- ±24' Minimum Clear Height
- Front Loaded
- 277/480 Volts, 3-Phase Power, 4-Wire Electrical

ADVANTAGES AND AMENITIES

- Near an abundance of restaurants, service amenities and industrial owner/users and manufacturing/distribution facilities.

±38,400 SF

Industrial Space For Lease



**SUITE 403
OFFICE
LAYOUT**



C&W - Donna Alderson, SIOR
Executive Managing Director
donna.alderson@cushwake.com
ph +1 702 605 1692
Lic. S.0017096
6725 Via Austi Parkway
Suite 275
Las Vegas, NV 89119 USA

C&W - Greg Tassi, SIOR
Executive Managing Director
greg.tassi@cushwake.com
ph +1 702 605 1713
Lic. S.0056472
6725 Via Austi Parkway
Suite 275
Las Vegas, NV 89119 USA

Prologis - Lisa Brady
VP - Market Officer
lbrady@prologis.com
ph +1 702 891 9141
Lic. S.1002217
3883 Howard Hughes Parkway
Suite 850
Las Vegas, NV 89169 USA

Prologis - Renee Carroll
Senior Leasing Manager
rcarroll@prologis.com
ph +1 702 891 9503
Lic. S.168458 & PM.0164416
3883 Howard Hughes Parkway
Suite 850
Las Vegas, NV 89169 USA

No warranty or representation, expressed or implied, is made as to the accuracy of the information contained herein, and same is submitted subject to error and omissions.

www.prologis.com

www.cushmanwakefield.com

© 2021 Cushman & Wakefield U.S., Inc. All rights reserved. This information has been obtained from sources believed reliable, but has not been verified for accuracy or completeness. You should conduct a careful, independent investigation of the property and verify all information. Any reliance on this information is solely at your own risk. Cushman & Wakefield U.S., Inc. and the C&W logo are service marks of Cushman & Wakefield U.S., Inc. All other marks displayed on this document are the property of their respective owners. Photos herein are the property of their respective owners. Use of these images without the express written consent of the owner is prohibited.