

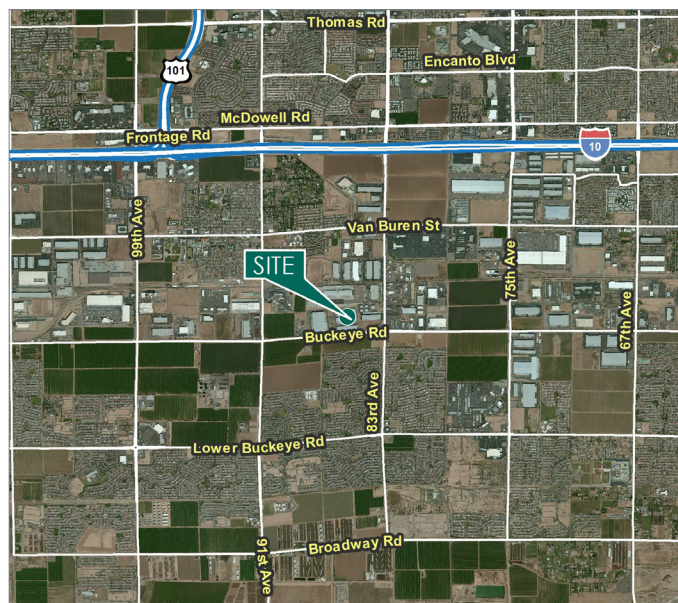
32,820 SF

Industrial Space For Lease



Prologis Westside Business Park

8590 W. Buckeye Road, Building 1
Tolleson, AZ 85353 USA



LOCATION

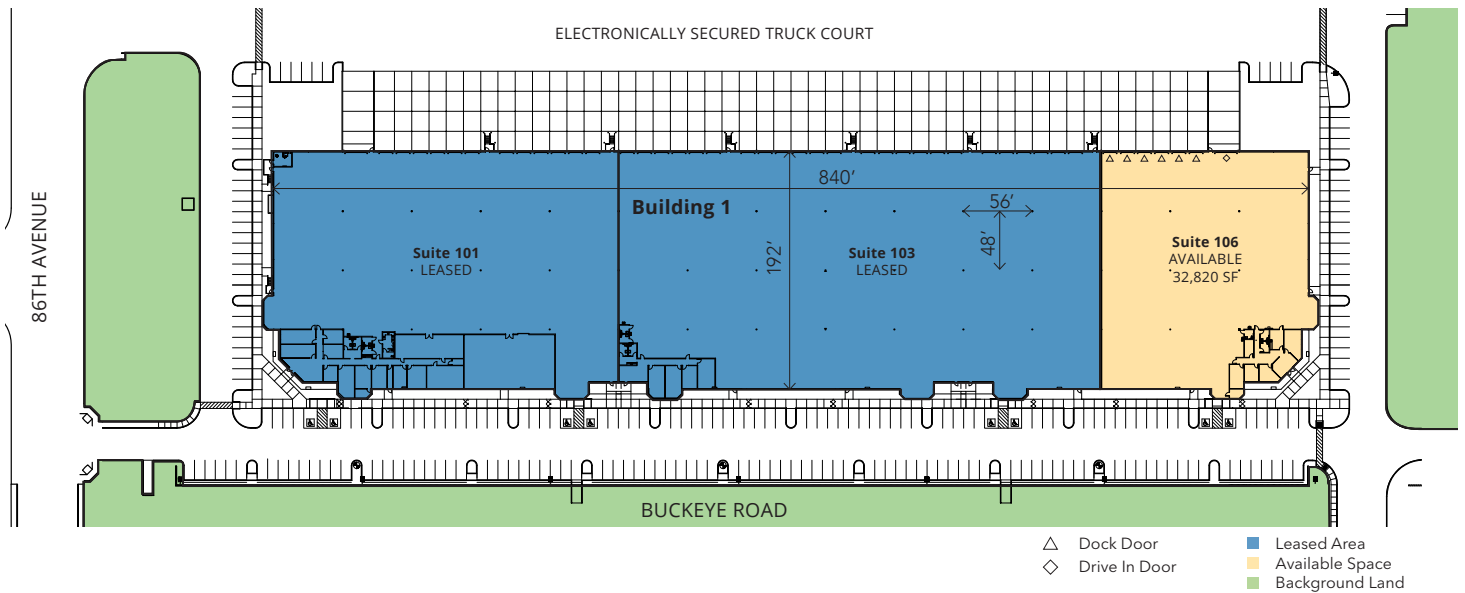
- Frontage on Buckeye Road
- Proximity to full diamond interchanges at 83rd Avenue /I-10 and 91st Avenue/I-10
- City of Tolleson, I-1 Zoning

FACILITY 164,210 SF TOTAL

- 32,820 SF Available
- End Cap Space
- 1,773 SF of Office
- 6 Dock Doors
- 1 Grade Level Door
- 200' Electronically Secured Truck Court
- 28' Clear Height
- 400 Amps, 277/480v Electric
- ESFR Sprinklered
- T5 Energy Efficient Lighting
- Evaporative Cooled Warehouse
- 66 Striped Parking Stalls
- Typical Column Spacing 48'x56'

32,820 SF

Industrial Space For Lease



Allen Lowe, SIOR
alowe@leearizona.com
ph +1 602 954 3747
3200 East Camelback Road
Suite 100
Phoenix, AZ 85018 USA

Matt Hobaica, SIOR
mhobaica@leearizona.com
ph +1 602 954 3755
3200 East Camelback Road
Suite 100
Phoenix, AZ 85018 USA

Prologis
Jeff Foster
jfoster@prologis.com
ph +1 480 379 9919
cell +1 480 280 4919
4555 East Elwood Street
Phoenix, AZ 85040

Prologis
Megan Creecy-Herman
mcreecyherman@prologis.com
ph +1 480 379 9904
cell +1 480 220 9292
4555 East Elwood Street
Phoenix, AZ 85040

No warranty or representation, expressed or implied, is made as to the accuracy of the information contained herein, and same is submitted subject to error and omissions.

www.prologis.com