

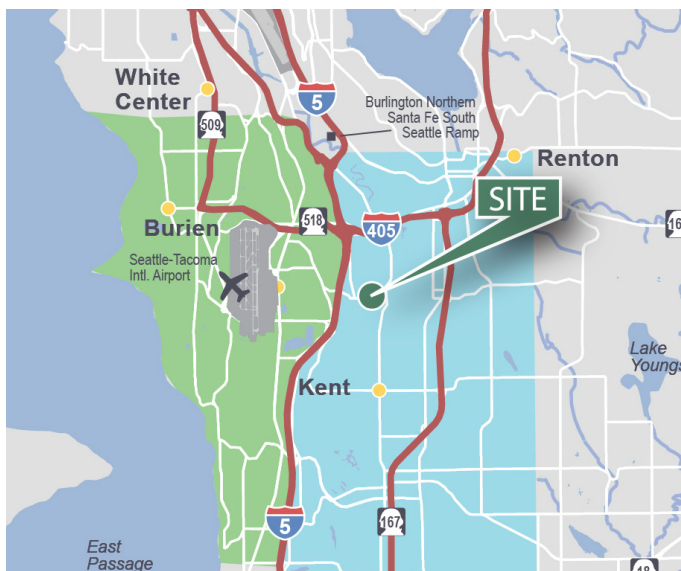
# 12,000 SF

## Industrial Space For Lease



## Prologis Park Tukwila 1

1133 Andover Park W  
Tukwila, WA 98188 USA



### LOCATION

- Easy access to I-5, I-405 and SR 167
- Within 5 miles of Sea-Tac Airport

### FACILITY

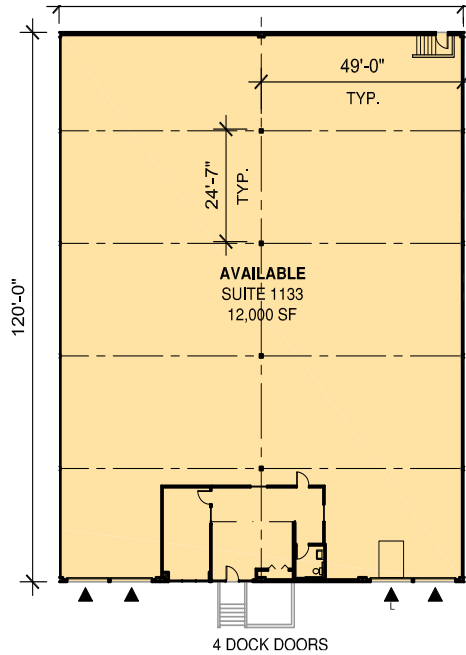
- 12,000 SF total available
- 849 SF of office space
- 24' clear height
- 4 dock-high doors
- 49'0" x 24'7" column spacing
- Available 1/1/2022
- Strong corporate image
- Use Prologis Essentials to help with pricing on forklifts and racking

# 12,000 SF

## Industrial Space For Lease



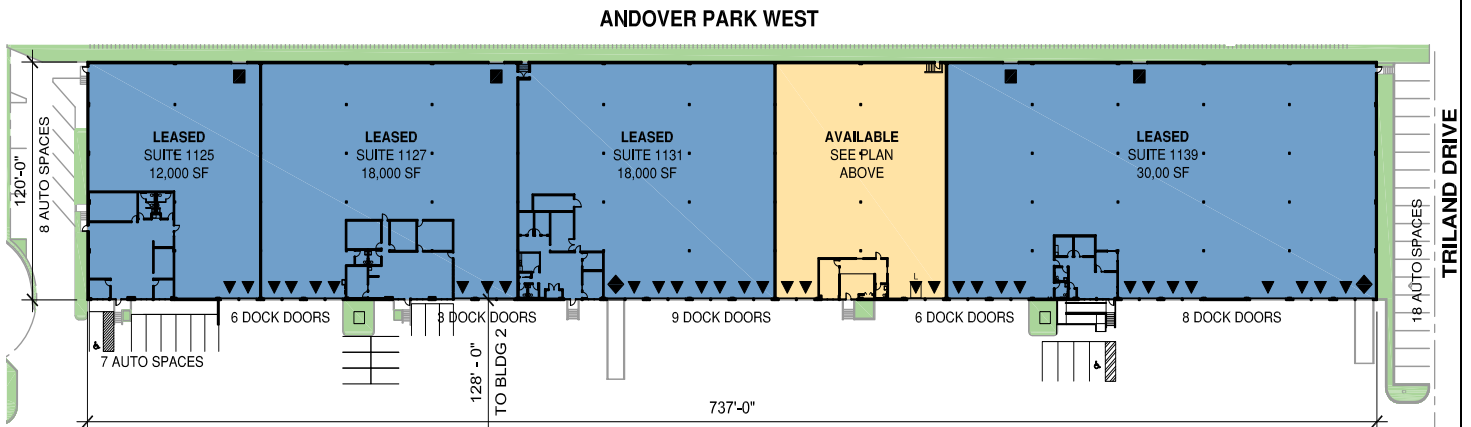
### Floor Plan



### Legend

▲ Dock-high door

### Site Plan



### Colliers International

**Matt McGregor**  
Matt.McGregor@Colliers.com  
ph +1 206 624 7401  
cell +1 206 851 4616  
601 Union Street  
Suite 5300  
Seattle, WA 98101 USA

**Bill Condon**  
Bill.Condon@Colliers.com  
ph +1 206 624 7400  
cell +1 206 235 9732  
601 Union Street  
Suite 5300  
Seattle, WA 98101 USA

**Bob Santucci**  
Bob.Santucci@Colliers.com  
ph +1 206 287 0213  
cell +1 206 949 2729  
601 Union Street  
Suite 5300  
Seattle, WA 98101 USA

### Prologis

**Lucca Merlino**  
lmerlino@prologis.com  
ph +1 206 414 7621  
cell +1 206 498 6511  
5900 Airport Way S  
Suite 300  
Seattle, WA 98108 USA

