

# 99,556 SF

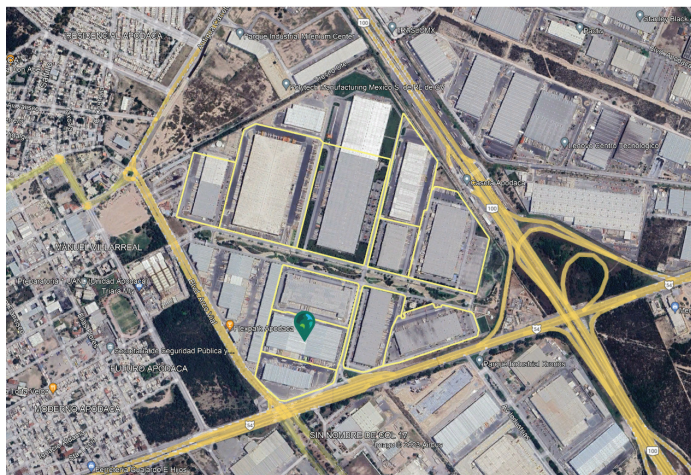
Industrial Space For Lease



## Prologis Park Apodaca, Building 14



Carr. Miguel Aleman km 21, Prologis Park Apodaca  
Edificio 14, Apodaca, N.L. C.P. 66670



Your single-source service for efficient move-in  
and operations: [prologisessentials.com](https://www.prologisessentials.com)

### FACILITY

- Total building area: 99,556 sf
- Office to suit (3% of NRA)
- Concrete tilt-up walls / Galvalok II Zintro roof
- 32 Ft minimum clear height
- 59 x 39 Ft typical bay size
- LED interior lighting + 3% natural light
- Hoses and cabinets as fire protection system
- 4 changes per hour ventilation
- 8 dock-high doors
- 2 Grade Level Drive-In doors
- 137 car parking spaces

### LOCATION

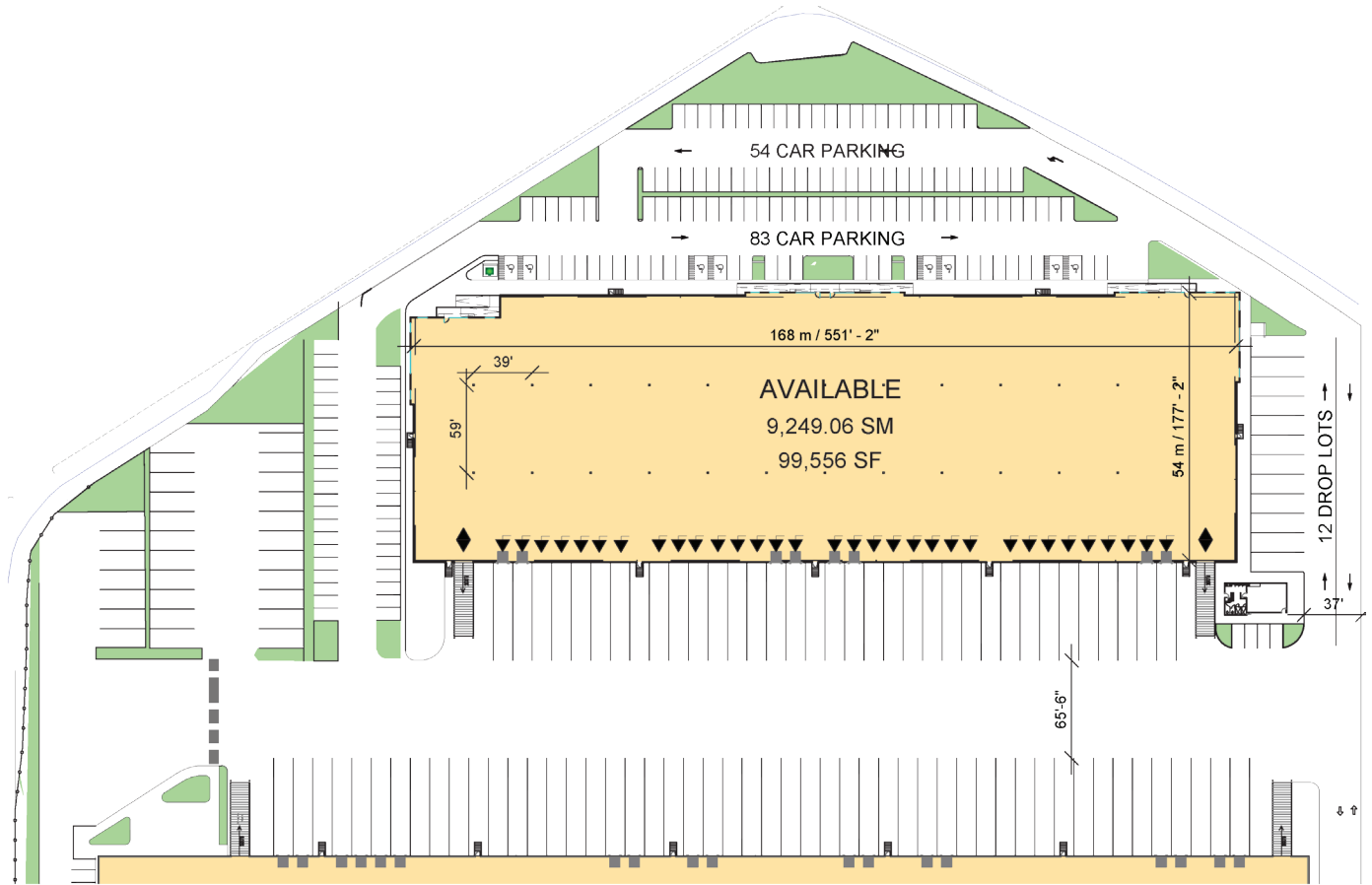
- Premier location for international logistics and manufacturing
- Close proximity to Monterrey Mariano Escobedo International Airport and direct access to Miguel Aleman Blvd.
- Abundant and qualified labor in the area
- Secure perimeter around property
- Two secured access gates to Park

# 99,556 SF

Industrial Space For Lease



## Prologis Park Apodaca, Building 14



 **SITE PLAN**

Prologis  
Leopoldo Otero  
Director, Leasing.  
lotero@prologis.com  
ph +52 81 8004 8016  
cell +52 81 8020 9556  
Miguel Aleman KM 21  
Apodaca , Nuevo Leon,  
66600 Mexico