

# PROLOGIS VALLEJO DC3

Azcapotzalco, CDMX, Mexico

## SITE PLAN

### DATA:

BUILDING AREA	10,077 SM / 108,469 SF
OFFICE AREA	1,259 SM / 13,448 SF
DOCK DOOR	6
AUTO PARKING	93
DROP LOTS	11
DRIVE IN DOORS	1
CLEAR HEIGHT	25'
LAND AREA	24,483 SM / 6.05 ACRES
FAR	45.28%

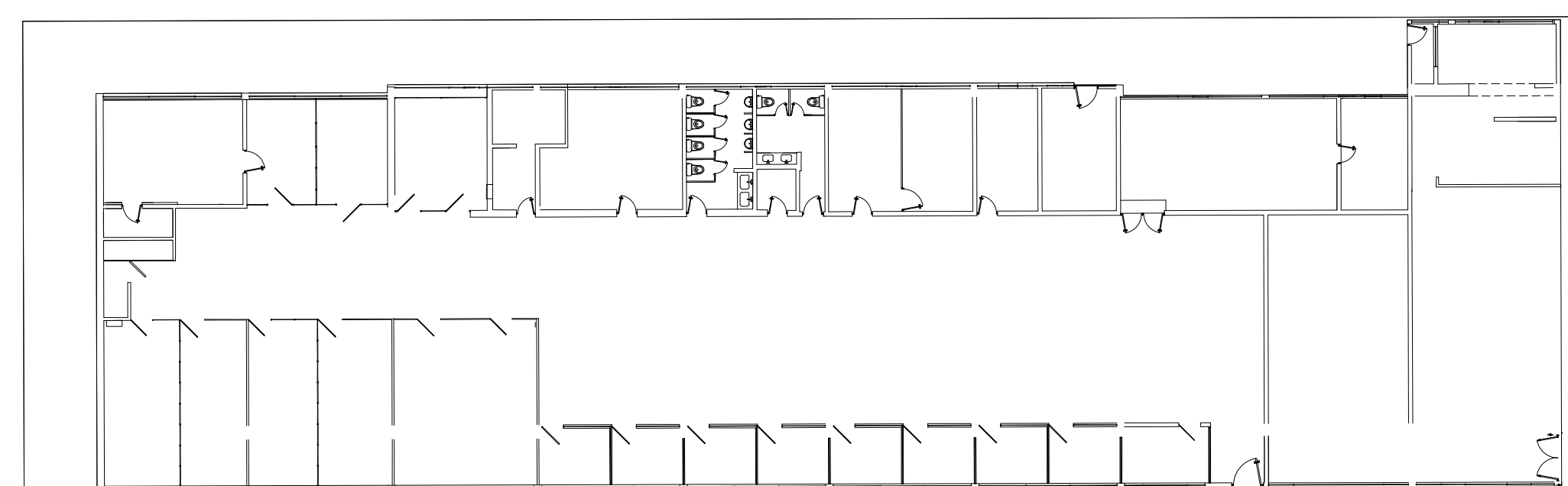
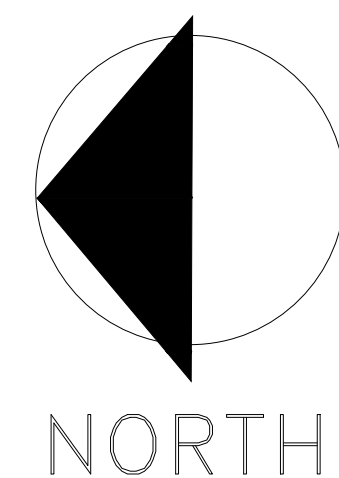
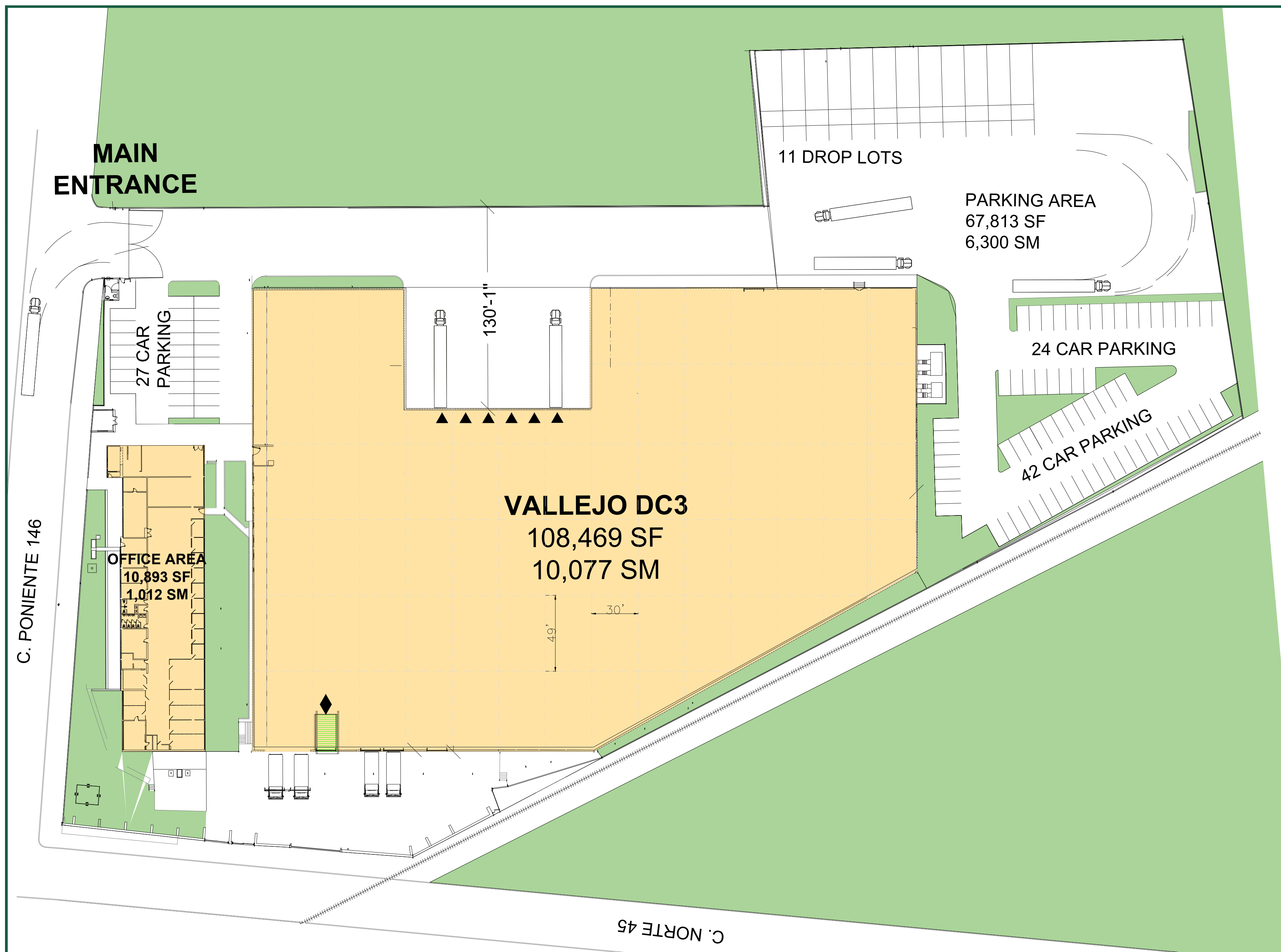
### LEGEND:

- LAND
- LEASED AREA
- AVAILABLE
- LEASED
- ▲ DOCK POSITION W/LEVELER
- △ FUTURE DOCK POSITION
- ◆ DRIVE IN DOOR

**NOTE:**  
THIS CONCEPTUAL PLAN IS FOR MARKETING PURPOSES ONLY, AND HAS BEEN PREPARED BASED ON PRELIMINARY AVAILABLE SITE INFORMATION DEEMED RELIABLE. ALL DIMENSIONS AND AREA CALCULATIONS ARE SUBJECT TO VERIFICATION BY A PROFESSIONAL ENGINEER FOR COMPLIANCE WITH ALL FEDERAL, STATE AND LOCAL REGULATIONS.



Paseo de los Tamarindos 90 Torre 2 Piso 22  
Bosques de las Lomas | CDMX 05120 | Mexico.  
[www.prologis.com](http://www.prologis.com)



**OFFICE AREA**  
**10,893 SF**  
**1,012 SM**