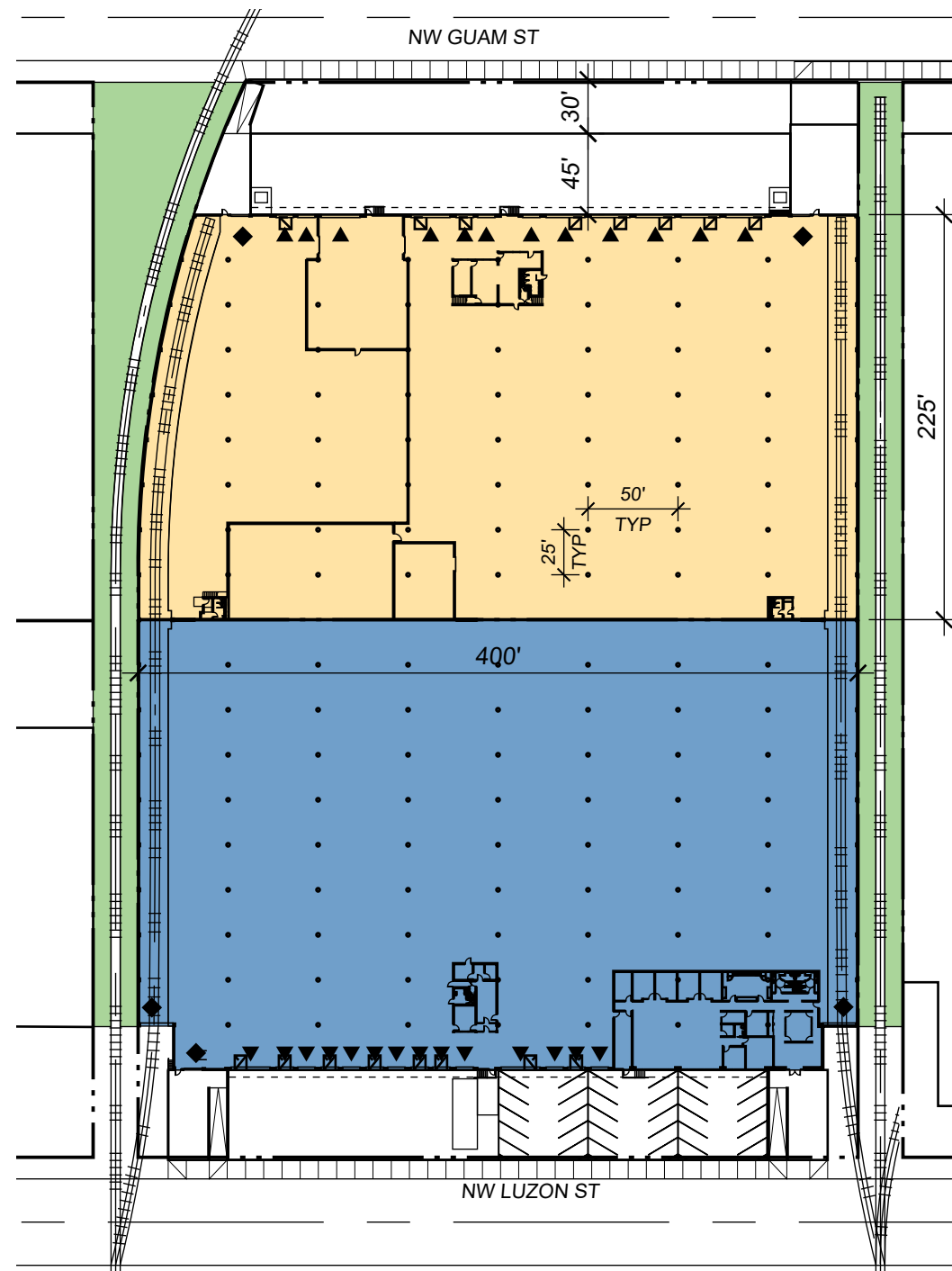


NORTHWEST INDUSTRIAL CENTER 1

3250 NW GUAM ST
PORTLAND, OR 97210



BUILDING AREA:	173,032 SF
LEASE AREA:	80,358 SF
1ST FLOOR OFFICE AREA:	1,735 SF
2ND FLOOR OFFICE AREA:	1,195 SF

AVAILABLE DOCK DOORS:	12
AVAILABLE DRIVE IN DOORS:	2
AVAILABLE DOCK LEVELERS:	8

LEGEND:

- ▲ DOCK DOOR
- ◆ DRIVE-IN DOOR
- LAND
- AVAILABLE AREA
- LEASED AREA



4380 SW Macadam Ave, Suite 285, Portland, Oregon
Telephone (503) 276.7373
Facsimile (503) 276.7372

M. Portland 503.224.9560 Vancouver 360.695.7879 Seattle 206.749.9993
www.mcknize.com
Architecture • Interiors
Planning • Engineering
MACKENZIE