

262,854 SF

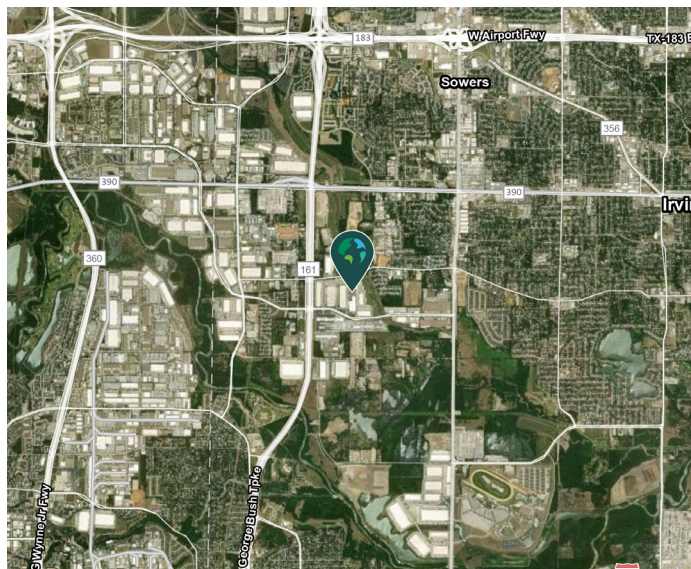
Industrial Space For Lease



Prologis Great Southwest 48



410 W Trinity Boulevard, Suite 100
Grand Prairie, TX 75050 USA



LOCATION

- Easy access to SH 360, I-30, and TX 161
- Located in the heart of the North Great Southwest industrial submarket with frontage on W. Trinity Blvd.

FACILITY

- 262,854 sf available (Divisible to \pm 100,000 sf)
- 6,757 total sf office
- 30' clear height
- 50' x 50' typical bay spacing
- 30 (9' x 10') dock doors with levelers
- 2 (10' x 14') overhead dock doors with ramp
- 1 (14' x 16') overhead dock door with ramp
- ESFR sprinkler system
- Existing racking in building can stay in place
- Four (4) HVLS fans

ADVANTAGES AND AMENITIES

- Secure 136'9" truck court with Guard Shack access
- 57 trailer spaces
- Access to the [Prologis Essentials](#) platform, which includes:
 - [Operations Essentials](#)
 - [Energy + Sustainability Essentials](#)
 - [Mobility Essentials](#)
 - [Workforce Essentials](#)



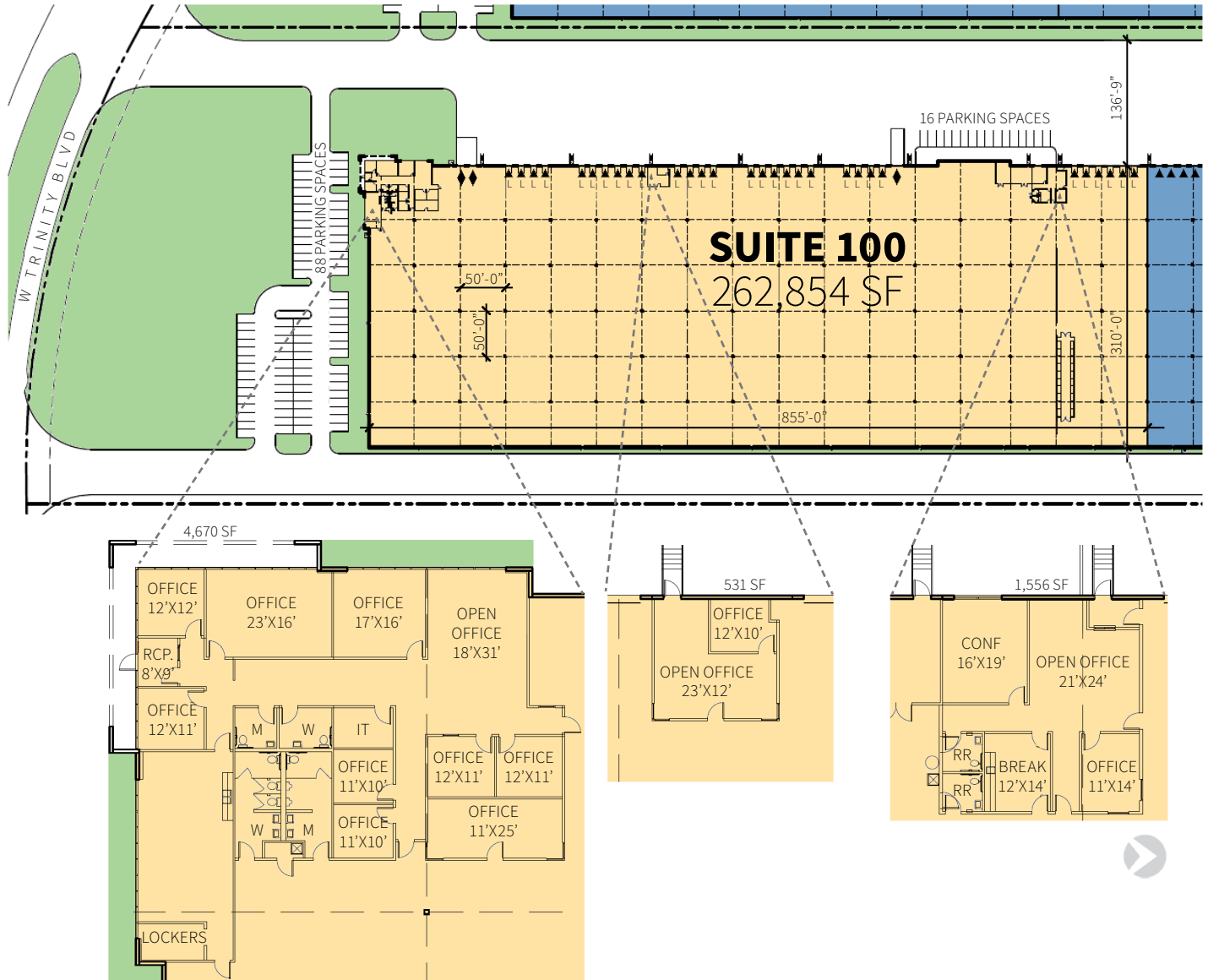
Scan to watch the property video!

262,854 SF

Industrial Space For Lease



Prologis Great Southwest 48



Cushman & Wakefield

David Eseke
david.eseke@cushwake.com
ph +1 972 663 9852
cell +1 805 637 9966
2021 McKinney Avenue
Suite 900
Dallas, TX 75201 USA

Cushman & Wakefield

Clay Balch
clay.balch@cushwake.com
ph +1 972 663 9853
cell +1 972 742 9234
2021 McKinney Avenue
Suite 900
Dallas, TX 75201 USA

Prologis

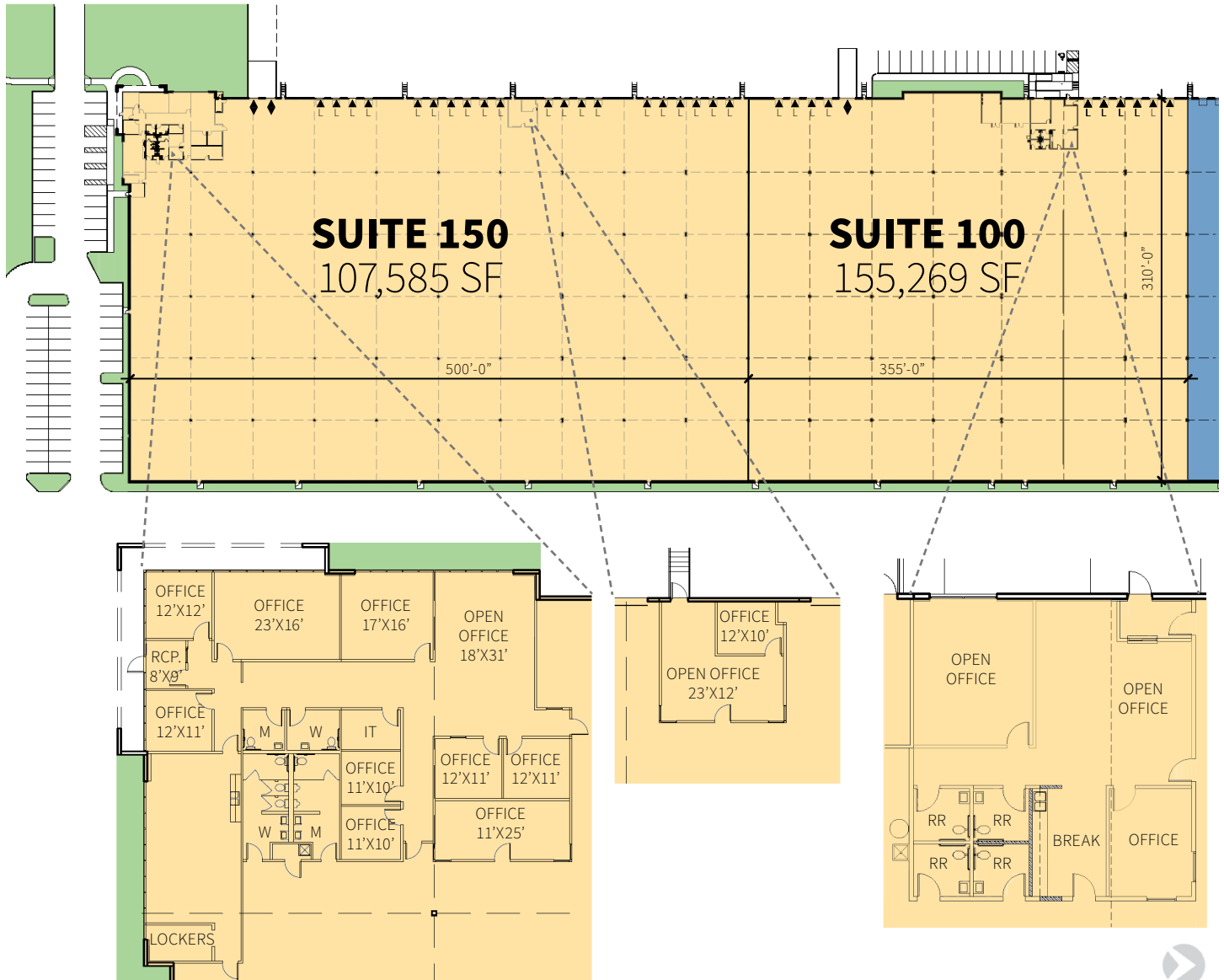
Ryan McNaughton
rmcnaughton@prologis.com
ph +1 972 884 9218
cell +1 214 673 9489
2021 McKinney Avenue
Suite 1050
Dallas, TX 75201 USA

262,854 SF

Industrial Space For Lease



Prologis Great Southwest 48



Cushman & Wakefield

David Eseke
david.eseke@cushwake.com
ph +1 972 663 9852
cell +1 805 637 9966
2021 McKinney Avenue
Suite 900
Dallas, TX 75201 USA

Cushman & Wakefield

Clay Balch
clay.balch@cushwake.com
ph +1 972 663 9853
cell +1 972 742 9234
2021 McKinney Avenue
Suite 900
Dallas, TX 75201 USA

Prologis

Ryan McNaughton
rmcnaughton@prologis.com
ph +1 972 884 9218
cell +1 214 673 9489
2021 McKinney Avenue
Suite 1050
Dallas, TX 75201 USA