

2,491 SF

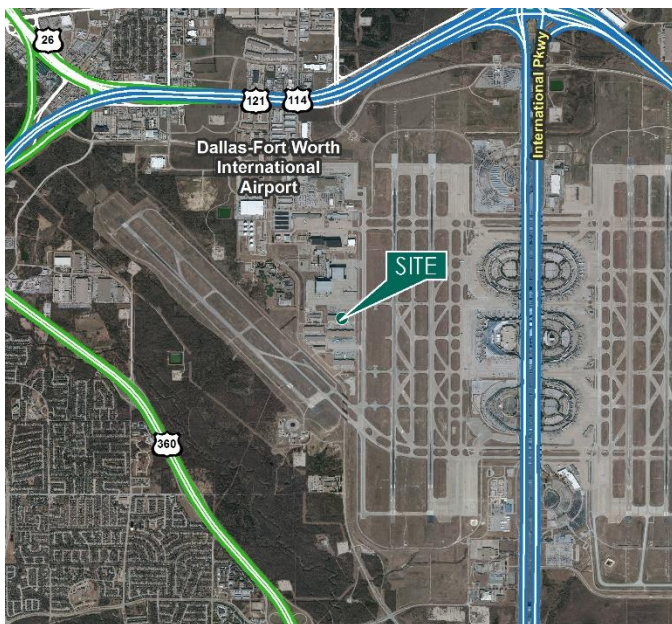
Industrial Space For Lease



Prologis DFW Air Cargo Center



1639 W. 23rd Street, Suite 390
DFW Airport, TX 75261 USA



LOCATION

- Immediate access to DFW International Airport
- Easy access to Hwy 114

FACILITY

- 2,491 sf mezzanine available

ADVANTAGES AND AMENITIES

- Adjacent to major all-cargo operators
- Close proximity to City of Grapevine
- Access to the [Prologis Essentials](#) platform, which includes:
 - [Operations Essentials](#)
 - [Energy Essentials](#)
 - [Workforce Essentials](#)
 - [Transportation Essentials](#)
 - [Digital Essentials](#)

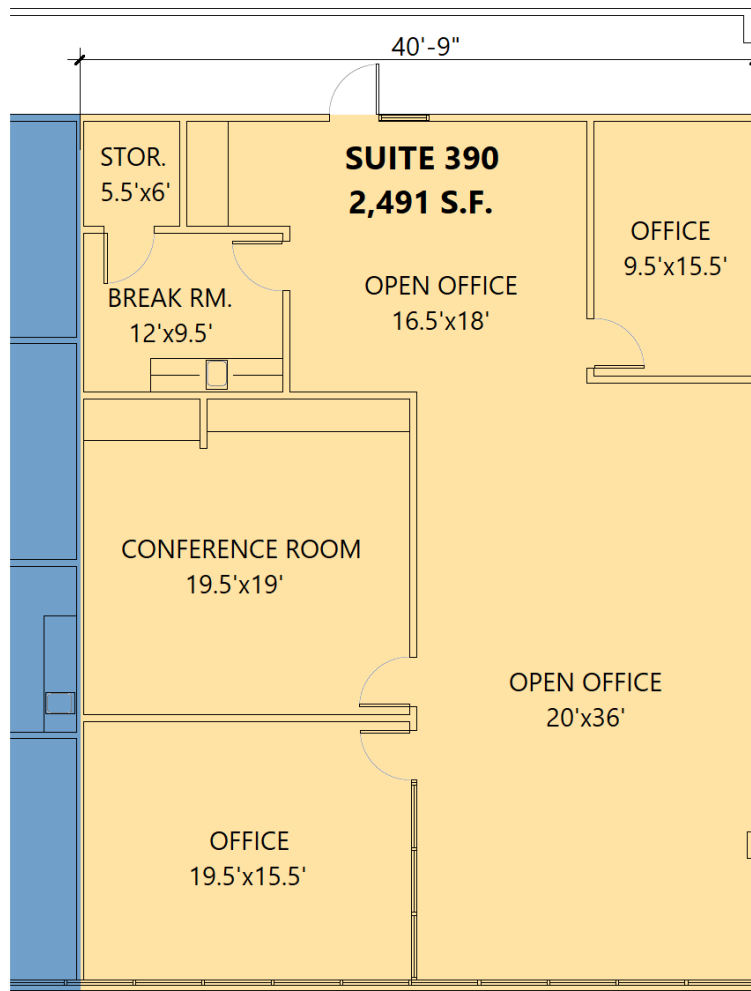
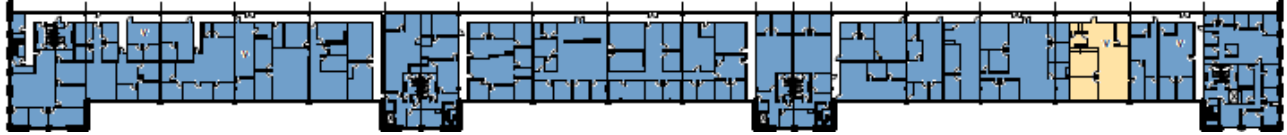
Prologis Essentials: your single-source service for efficient move-in and operations at prologisessentials.com

2,491 SF

Industrial Space For Lease



Prologis DFW Air Cargo Center



Prologis

Keesha Partida
kpartida@prologis.com
ph +1972 884 9224
cell +1214 533 1161
2021 McKinney Avenue
Suite 1050
Dallas, TX 75201 USA

Prologis Essentials: your single-source service for efficient move-in and operations at prologisessentials.com

No warranty or representation, expressed or implied, is made as to the accuracy of the information contained herein, and same is submitted subject to error and omissions.