

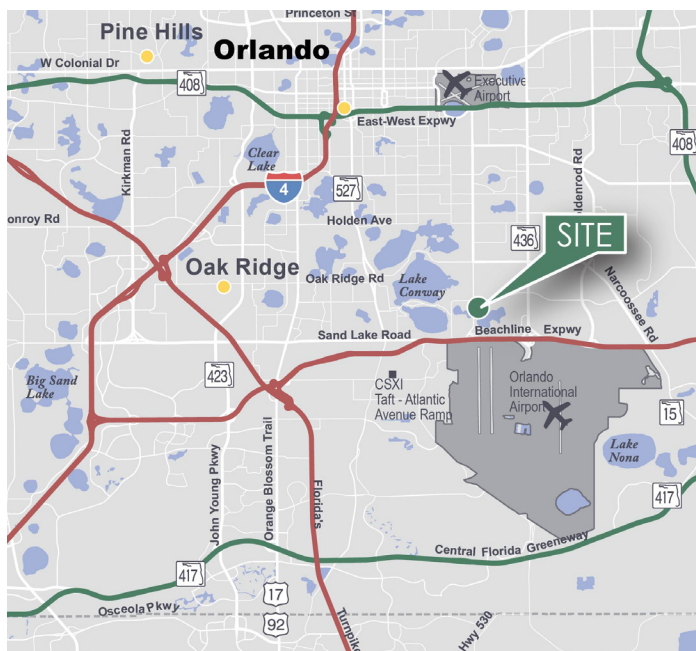
Up to 103,312 SF

Industrial Space For Lease



Prologis Airport DC North

6851 S. Conway Road
Orlando, FL 32812 USA



LOCATION

- One mile to the Beachline Expressway, Sand Lake Road and Orlando International Airport
- Five miles to Florida's Turnpike

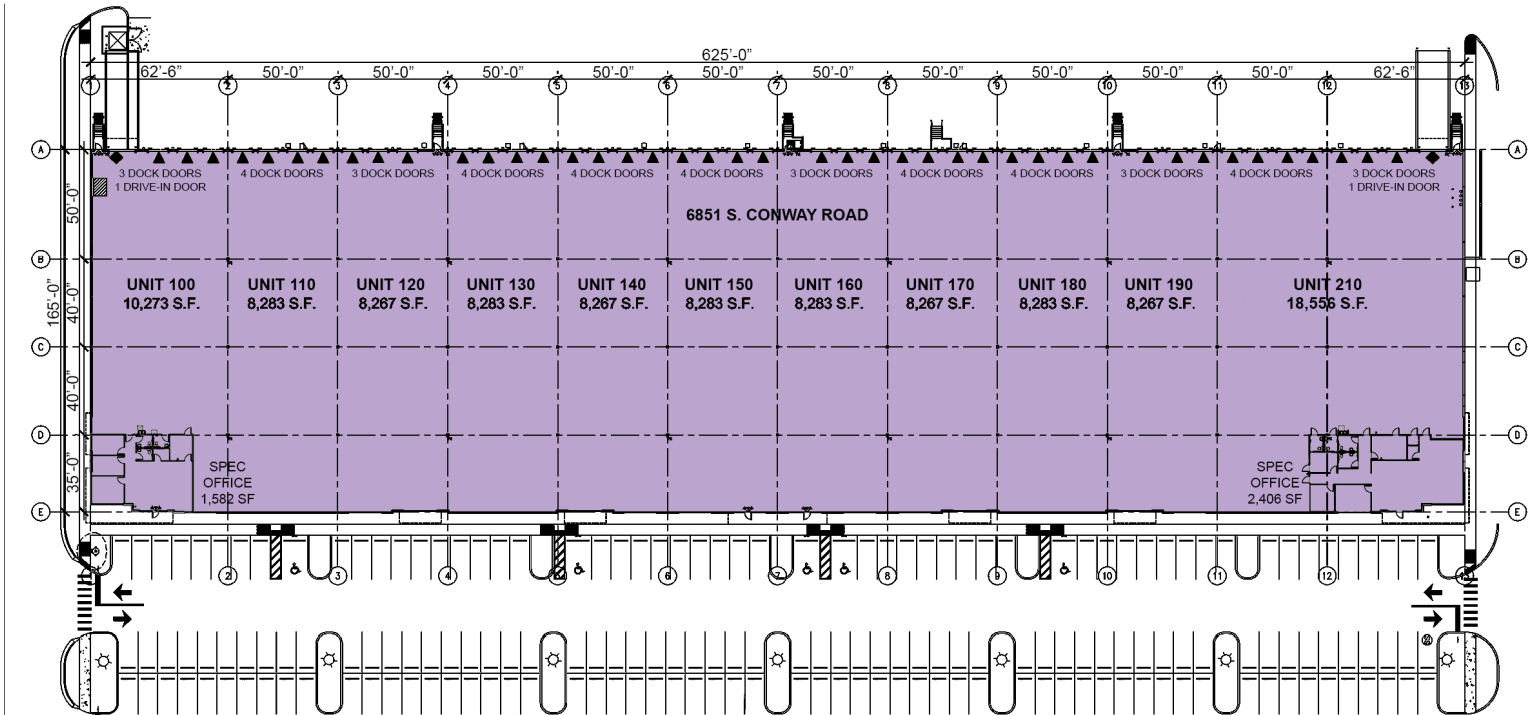
BUILDING F FACILITY

- Up to 103,312 SF available; divisible
- Office-to-suit
- Class A industrial facility
- Rear loading
- 32' clear height
- 165' building depth
- 40' x 50' column spacing (typical) w/50' x 50' speed bays
- 43 dock doors
- Two drive-in doors
- 120' truck court w/50' concrete pad
- 1.10 / 1,000 SF parking
- 208/480 volt, three-phase power
- LED fixtures w/motion sensors
- ESFR sprinkler system
- Fiber: TBD
- Electric service: Duke Energy

[Virtual Tour - Click Here](#)

Up to 103,312 SF

Industrial Space For Lease



SUITE 100

- 10,273 SF
- 1,582 SF spec office
- Three dock doors
- One drive-in door

SUITE 210

- 18,556 SF
- 2,406 SF spec office
- Seven dock doors
- One drive-in door

LEGEND

- PLANNED
- ▼ DOCK DOOR
- ◆ DRIVE-IN DOOR



Lee & Associates
 William "Bo" Bradford, CCIM, SIOR
 bbradford@lee-associates.com
 +1 321.281.8502 phone
 1017 E. South Street
 Orlando, FL 32801 USA

Lee & Associates
 Tom McFadden, SIOR
 tmcfadden@lee-associates.com
 +1 321.281.8501 phone
 1017 E. South Street
 Orlando, FL 32801 USA

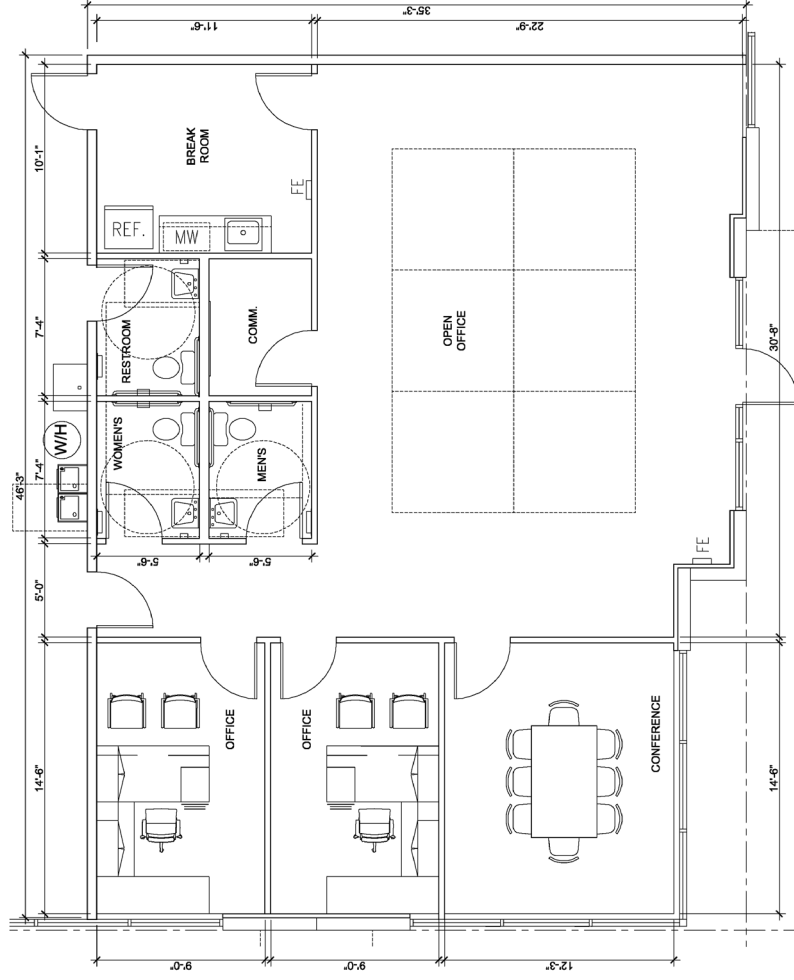
Lee & Associates
 Rebecca Perez
 rmperez@lee-associates.com
 +1 321.281.8505 phone
 1017 E. South Street
 Orlando, FL 32801 USA



Prologis Airport DC North
6851 S. Conway Road, Suite 100
Orlando, FL 32812 USA

SPEC OFFICE: 1,582 SF
WAREHOUSE: 8,691 SF
TOTAL: 10,273 SF

SPEC OFFICE PLAN





Prologis Airport DC North
 6851 S. Conway Road, Suite 210
 Orlando, FL 32812 USA

SPEC OFFICE: 2,406 SF
 WAREHOUSE: 16,150 SF
 TOTAL: 18,556 SF

SPEC OFFICE PLAN

