

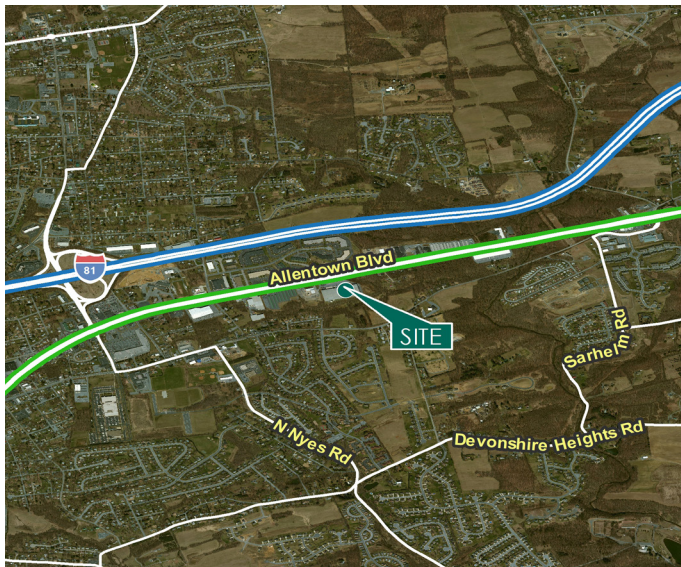
# 200,000 SF

## Industrial Space For Lease



## Prologis Harrisburg

6455 Allentown Boulevard  
Harrisburg, PA 17112 USA



### LOCATION

- Located off of Exit 72 of I-81 with easy access to Route 283, I-83, I-78 and the Norfolk Southern Regional Intermodal yard.
- 1.4 miles from I-81 and 11 miles from I-76

### FACILITY

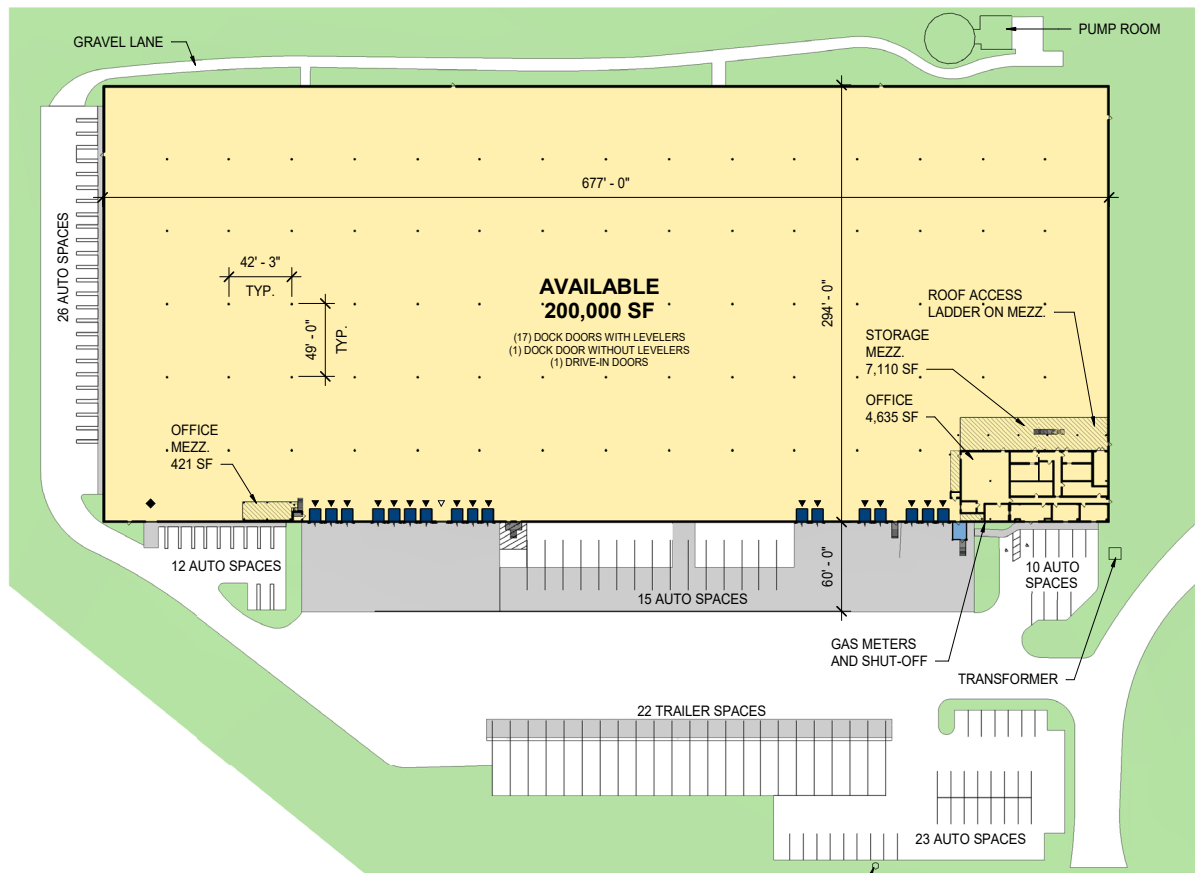
- 200,000 square foot building
- 16.74 acres
- 294' x 677' available dimensions
- Built in 1994
- 27' clear height
- 42'3" x 49' column spacing
- 18 (8' x 10') dock doors (17 with 25,000 lb levelers and seals)
- 1 drive-in door
- ESR fire protection system
- ±86 car parking spaces and ±22 trailer drops
- LED on motion sensors

### ADVANTAGES AND AMENITIES

- Access to interstates, major cities and airports.
- Proximity to FedEx (8.9 miles), UPS (11.5 miles) and USPS (1.3 miles)

# 200,000 SF

## Industrial Space For Lease



#### LEGEND

- ▲ DOCK POSITION W/ LEVELER
- △ DOCK POSITION W/O LEVELER
- ◆ DRIVE-IN DOOR
- LAND
- LEASED AREA
- AVAILABLE AREA

## CBRE

#### CBRE, Inc.

**Bart D. Anderson**  
bart.anderson@cbre.com  
ph +1 717 540 2706  
cell +1 717 756 2651  
5 Capital Drive  
Suite 201  
Harrisburg, PA 17110 USA

#### CBRE, Inc.

**Patrick Lafferty, CCIM, SIOR**  
patrick.lafferty@cbre.com  
ph +1 717 540 2704  
cell +1 717 940 2131  
5 Capital Drive  
Suite 201  
Harrisburg, PA 17110 USA

#### CBRE, Inc.

**Michael Hess, SIOR**  
michael.hess@cbre.com  
ph +1 717 540 2705  
cell +1 717 649 5209  
5 Capital Drive  
Suite 201  
Harrisburg, PA 17110 USA

#### Prologis

**Meg Buffington**  
mbuffington@prologis.com  
ph +1 717 790 5102  
cell +1 717 919 3478  
4900 Ritter Road  
Suite 150  
Mechanicsburg, PA 17055 USA