







# PROLOGIS ALLPOINTS MIDWEST 9

NEC Bradford & Smith Road,  
Plainfield, IN 46168

AVAILABLE SF:	626,685 SF
AVAILABLE SITE:	+/- 35.2 ACRES
SPEED BAYS:	70'
COLUMN SPACING:	60' X 56'
CLEAR HEIGHT:	40'
DOCK DOOR RATIO:	1:10,000
AUTO PARKING STALLS:	434
TRAILER PARKING STALLS:	55

## LEGEND:

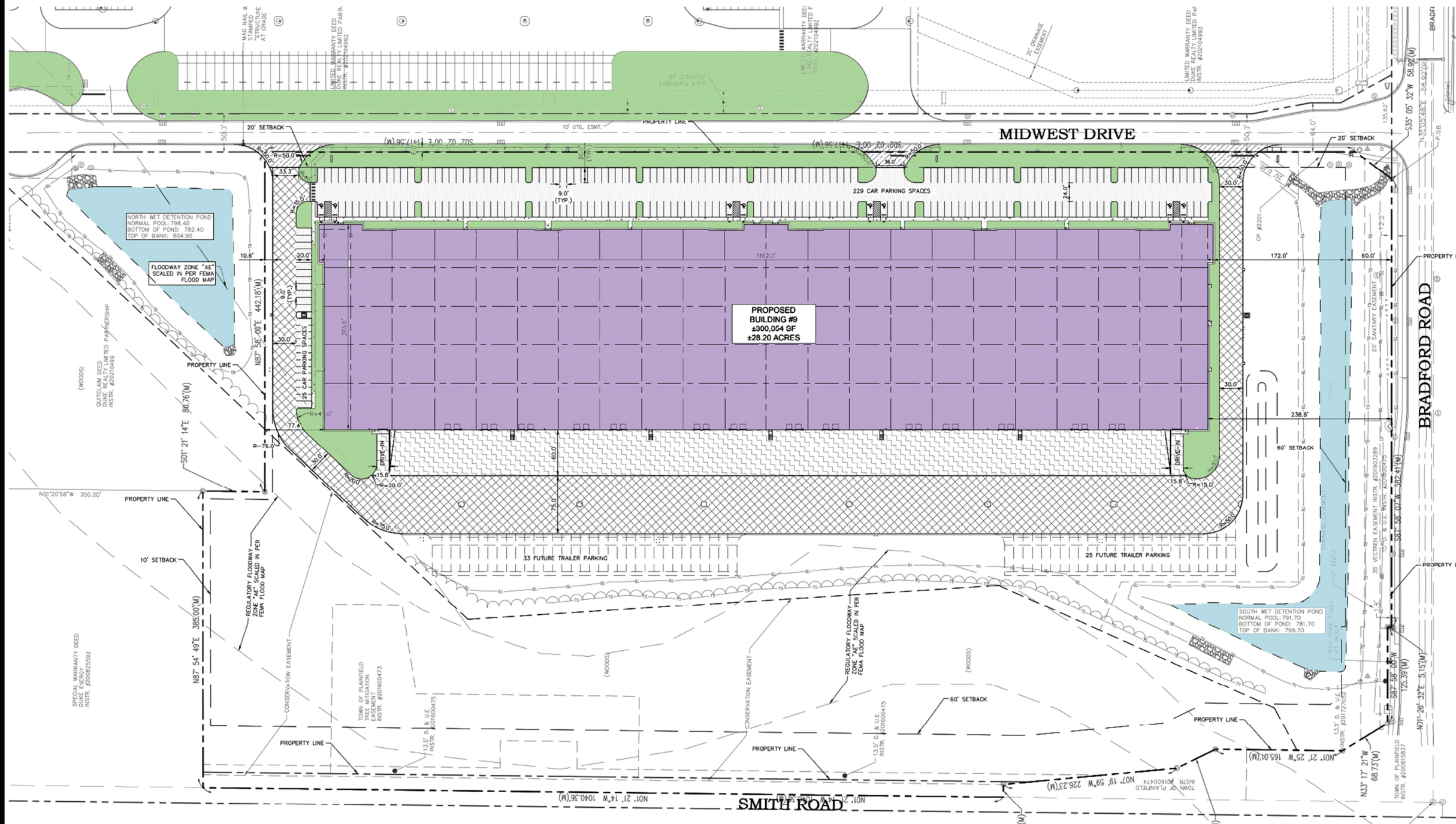
-  DOCK POSITION W/ LEVELER
-  DOCK POSITION
-  DRIVE-IN DOOR
-  LEASED AREA
-  AVAILABLE AREA
-  LAND



8888 KEYSTONE CROSSING, SUITE 570  
INDIANAPOLIS, IN 46240  
PHONE: (317) 228.6200



DATE:



NOTE: THIS CONCEPTUAL PLAN IS FOR MARKETING PURPOSES ONLY AND HAS BEEN PREPARED BASED ON PRELIMINARY AVAILABLE SITE INFORMATION DEEMED RELIABLE. ALL DIMENSION AREA CALCULATIONS ARE SUBJECT TO VERIFICATION BY A PROFESSIONAL ENGINEER FOR COMPLIANCE WITH ALL FEDERAL, STATE AND LOCAL REGULATIONS.