

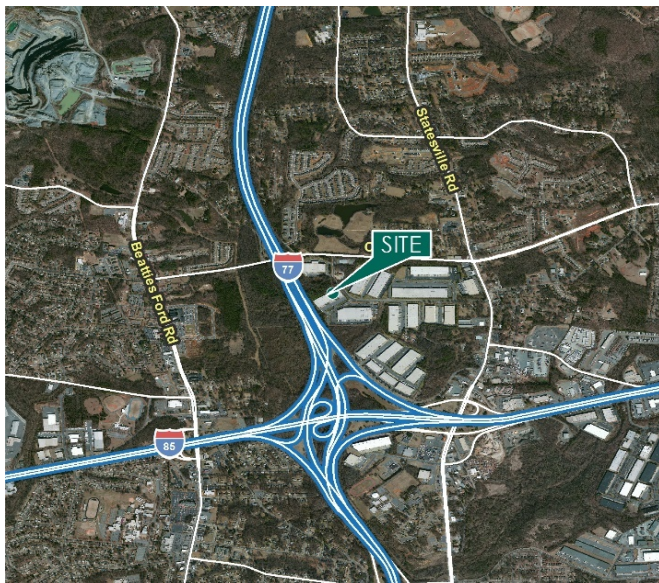
16,000 - 84,000 SF

Industrial Space For Lease



Prologis Crosspoint Center Park

2700 Hutchison McDonald Road
Charlotte, NC 28269 USA



LOCATION

- Immediate access to Interstate I-77 and I-85
- Minutes from Charlotte Douglas International Airport
- Strategic distribution location in North Submarket
- Close proximity to Charlotte Central Business District

FACILITY

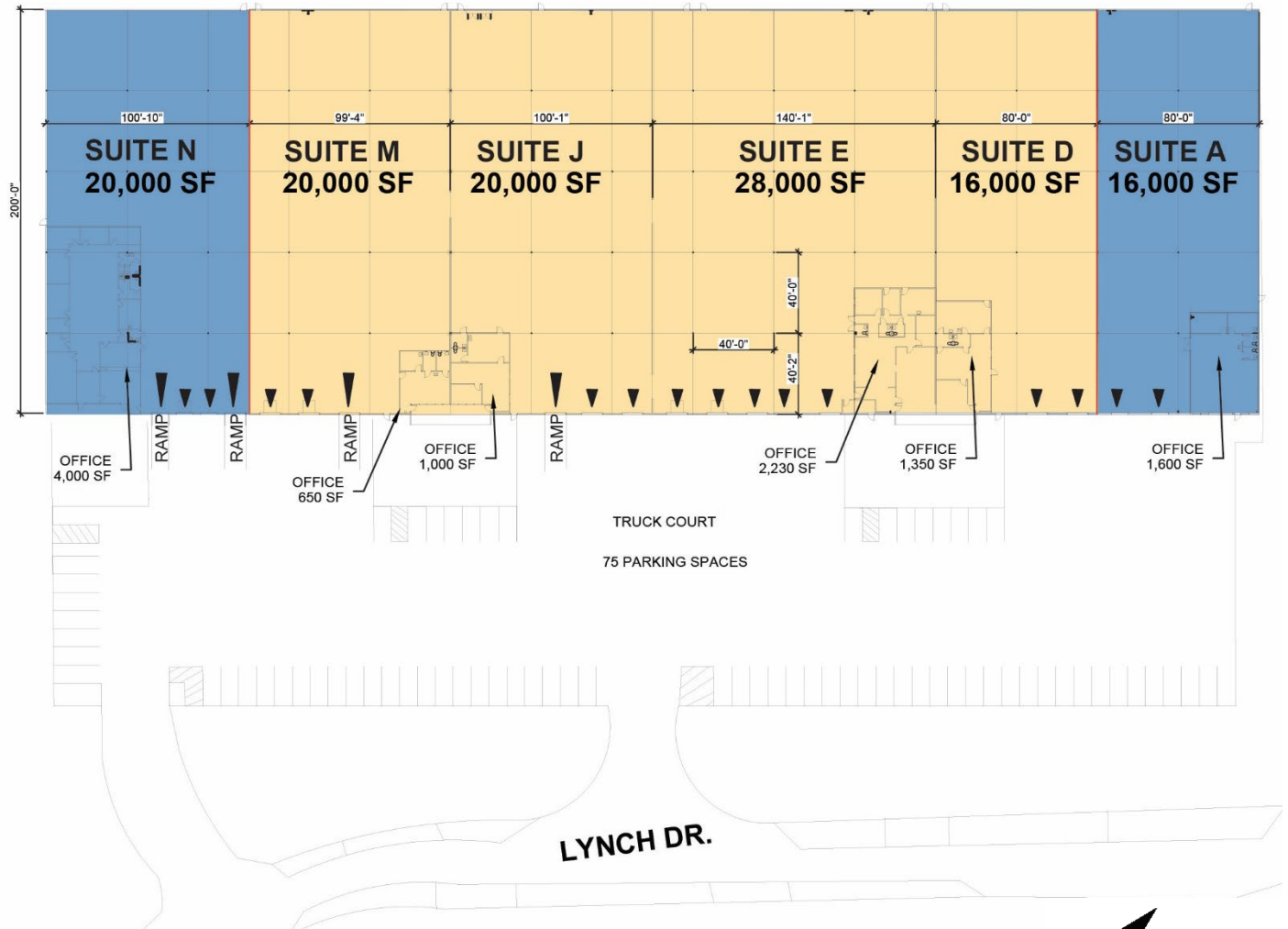
- 100,000 total SF
- 16,000 - 84,000 available SF
- 5,230 office SF
- 20' clear height
- 11 dock doors
- 2 drive in doors
- 200' building depth
- 40' x 40' column spacing
- ESFR sprinkler system
- LED Lighting
- Front load building
- 6" reinforced concrete slab
- Ample parking

ADVANTAGES AND AMENITIES

- Professionally landscaped, controlled park environment
- Direct interstate access to I-85 and I-77
- First class park setting
- Prologis Clear Lease – a simplified lease that fixes operating and capital expenses for the entire lease term

16,000 - 84,000 SF

Industrial Space For Lease



Check out a virtual tour at: <https://my.matterport.com/show/?m=PRiafoj3dBv>



JLL
Matthew Greer, SIOR,CCIM
Matthew.greer@am.jll.com
ph +1 704 804 5762
cell +1 704 277 5675
4201 Congress Street
Suite 300
Charlotte, NC 28209 USA

JLL
Jordan Quinn
Jordan.quinn@am.jll.com
ph +1 704 804 5836
cell +1 973 725 3071
4201 Congress Street
Suite 300
Charlotte, NC 28209 USA

JLL
Britten Mathews
Britten.mathews@am.jll.com
ph +1 980 819 3857
cell +1 804 363 3839 4201
Congress Street
Suite 300
Charlotte, NC 28209 USA

Prologis
Bryan Blythe
bblythe@prologis.com
ph +1 704 426 8002
cell +1 704 390 5378
1900 South Blvd
Suite 302
Charlotte, NC 28203 USA

