

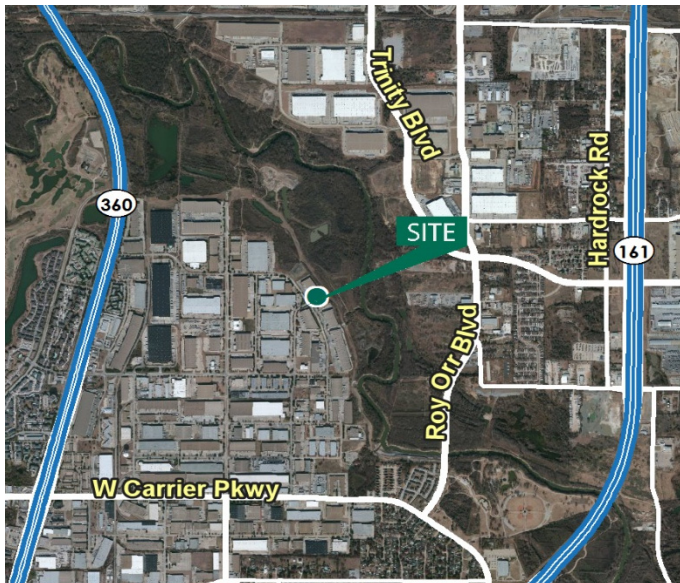
48,034 SF

Industrial Space For Lease



Prologis Great Southwest

2920 114th Street, Suite 200
Grand Prairie, Texas 75050 USA



LOCATION

- Situated in the highly desirable North Great Southwest industrial submarket
- Excellent access to major highways SH-360, SH-183 and SH-161

FACILITY

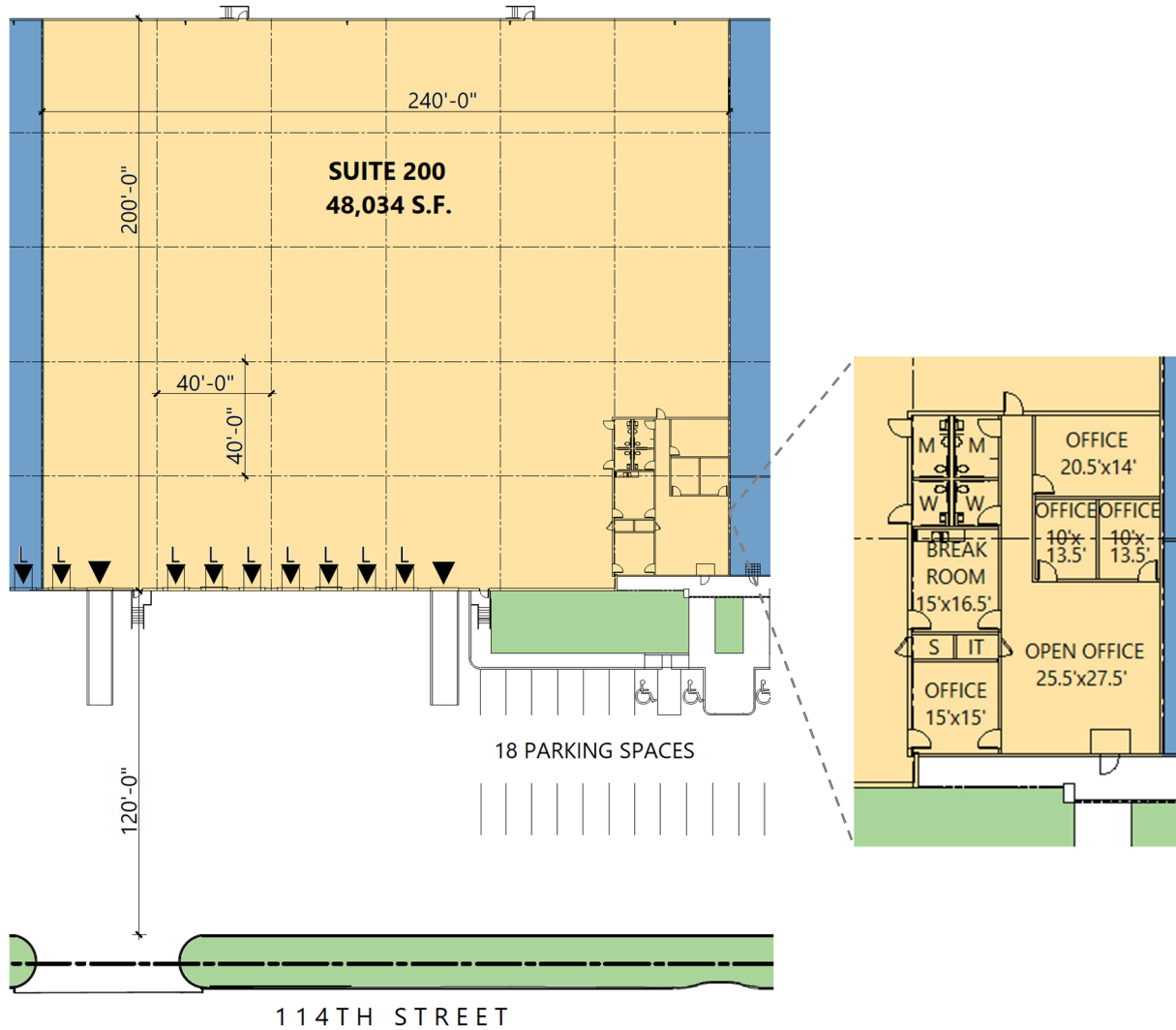
- 48,034 sf available
- 2,275 sf office
- 26' clear height
- 40' x 40' typical column spacing
- 8 (9' x 10') dock doors with levelers
- 1 (9' x 10') dock door with ramp
- 1 (12' x 14') dock door with ramp
- ESFR sprinkler system
- 120' truck court

ADVANTAGES AND AMENITIES

- Class A

48,034 SF

Industrial Space For Lease



Lee & Associates

Mark Graybill, SIOR, CCIM
mgraybill@lee-associates.com
ph +1 972 934 4007
cell +1 214 914 5537
14950 Quorum Drive
Suite 100
Dallas, TX 75254 USA

Lee & Associates

Reed Parker, SIOR
rparker@lee-associates.com
ph +1 972 934 4020
cell +1 214 558 5558
14950 Quorum Drive
Suite 100
Dallas, TX 75254 USA

Prologis

Ryan McNaughton
rmcnaughton@prologis.com
ph +1 972 884 9218
cell +1 214 673 9489
2021 McKinney Avenue
Suite 1050
Dallas, TX 75201 USA