

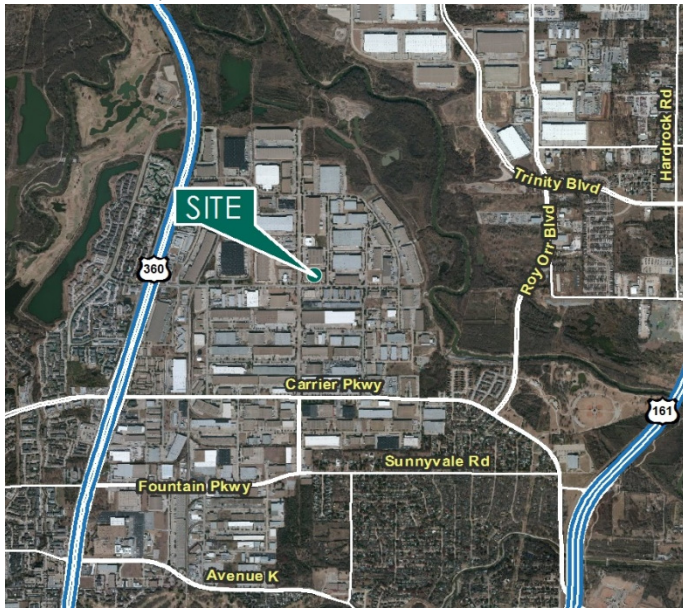
38,400 SF

Industrial Space For Lease



Prologis Great Southwest

1205 Post & Paddock Street, Suite 100
Grand Prairie, TX 75050 USA



LOCATION

- In the heart of the North Great Southwest Industrial submarket with Frontage on Post & Paddock and North Great Southwest Parkway and with easy access to SH 360, I-30 and TX-161

FACILITY

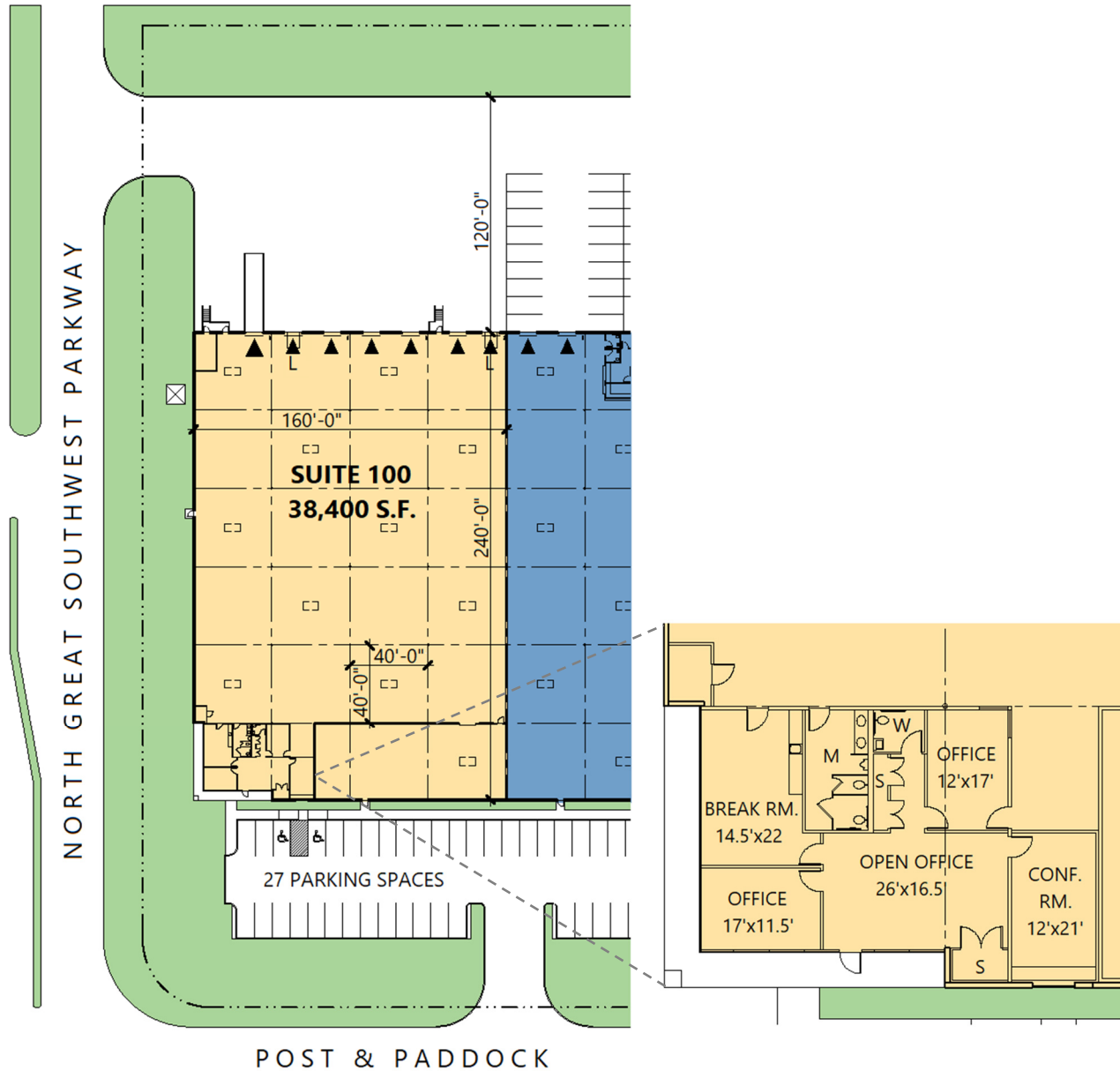
- 38,400 sf available
- 1,942 sf office
- 3,743 sf HVAC Room
- 24' clear height
- 40'x 40' typical bay spacing
- 6 (9' x 10') overhead dock doors, 2 with levelers
- 1 (9' x 10') dock door with ramp
- ESFR sprinkler system

ADVANTAGES AND AMENITIES

- Rear load configuration

38,400 SF

Industrial Space For Lease



Lee & Associates

Mark Graybill, SIOR, CCIM
mgraybill@lee-associates.com
ph +1 972 934 4007
cell +1 214 914 5537
14950 Quorum Drive
Suite 100
Dallas, TX 75254 USA

Lee & Associates

Reed Parker, SIOR
rparker@lee-associates.com
ph +1 972 934 4020
cell +1 214 558 5558
14950 Quorum Drive
Suite 100
Dallas, TX 75254 USA

Prologis

Ryan McNaughton
rmcnaughton@prologis.com
ph +1 972 884 9218
cell +1 214 673 9489
2021 McKinney Avenue
Suite 1050
Dallas, TX 75201 USA