

89,250 SF

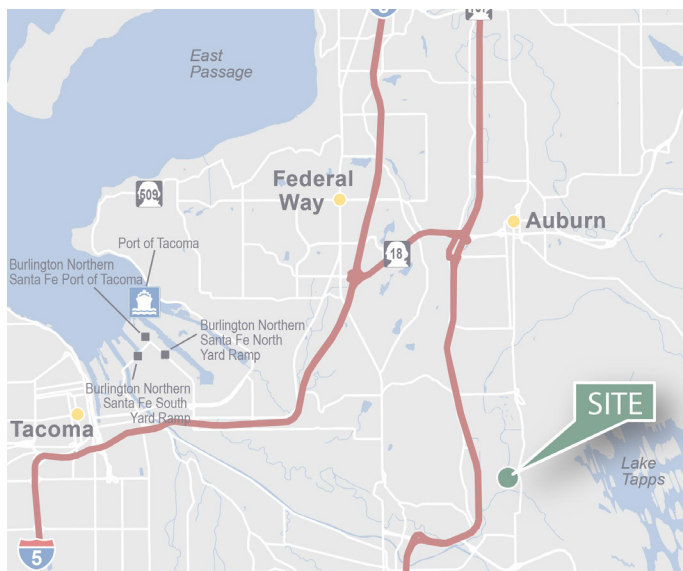
Industrial Space For Lease



Prologis Park Sumner 17



14810 Puyallup St, Suite 100
Sumner, WA 98390



LOCATION

- Located in Prologis Park Sumner
- Approximately 12 miles to Port of Tacoma
- Visibility to 142nd Street
- Direct access to SR-167 via 24th Street

FACILITY

- 89,250 SF shell
- Approximately 4,851 SF 1st floor office
- Approximately 4,809 SF mezzanine office
- 30' clear height
- 52'0" x 60'0" typical column spacing
- 11 dock-high doors
- 2 drive-in doors
- Additional trailer parking available
- ESFR
- Strong corporate image

ADVANTAGES AND AMENITIES

- Access to the Prologis Essentials platform, which includes:
 - [Operations Essentials](#)
 - [Energy Essentials](#)
 - [Workforce Essentials](#)
 - [Mobility Essentials](#)
 - [Digital Essentials](#)

Your single-source service for efficient move-in and operations: [prologisessentials.com](https://www.prologisessentials.com)

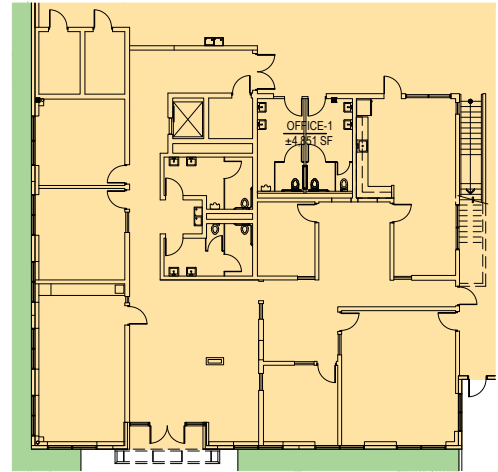
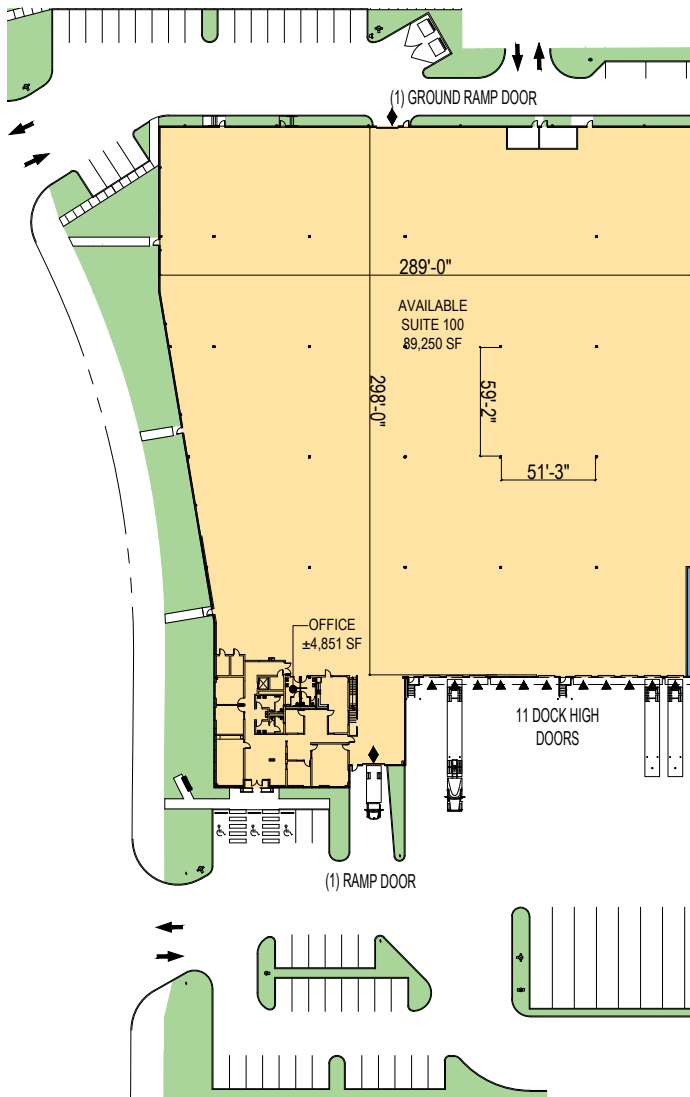
89,250 SF

Industrial Space For Lease

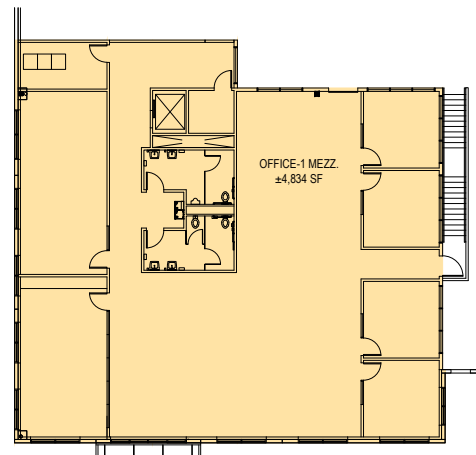


Prologis Park Sumner 17

Floor Plan



SUITE 100 OFFICE 1ST FLOOR
1/16" = 1'-0"



SUITE 100 OFFICE MEZZANINE
1/16" = 1'-0"



Colliers

Matt McGregor

Matt.McGregor@Colliers.com
ph +1 206 624 7401
601 Union Street
Suite 5300
Seattle, WA 98101 USA

Bill Condon

Bill.Condon@Colliers.com
ph +1 206 235 9732
601 Union Street
Suite 5300
Seattle, WA 98101 USA

Prologis

Mark Roddy

mroddy@prologis.com
ph +1 206 414 7617
33930 Weyerhaeuser Way South
Suite 100
Federal Way, WA 98001 USA