

# ±29,188 SF

## Industrial Space For Lease



## Prologis Henderson Distribution Center 1

8385 Eastgate Road, Suite 100  
Henderson, NV 89015 USA



### LOCATION

- Desirable Henderson location at the intersection of Eastgate Road & Lake Mead Parkway
- Quick access to US-95 and I-215 freeways
- Zoned: General Industrial (I-G)
- City of Henderson jurisdiction
- Professionally owned and managed by Prologis

### FACILITY

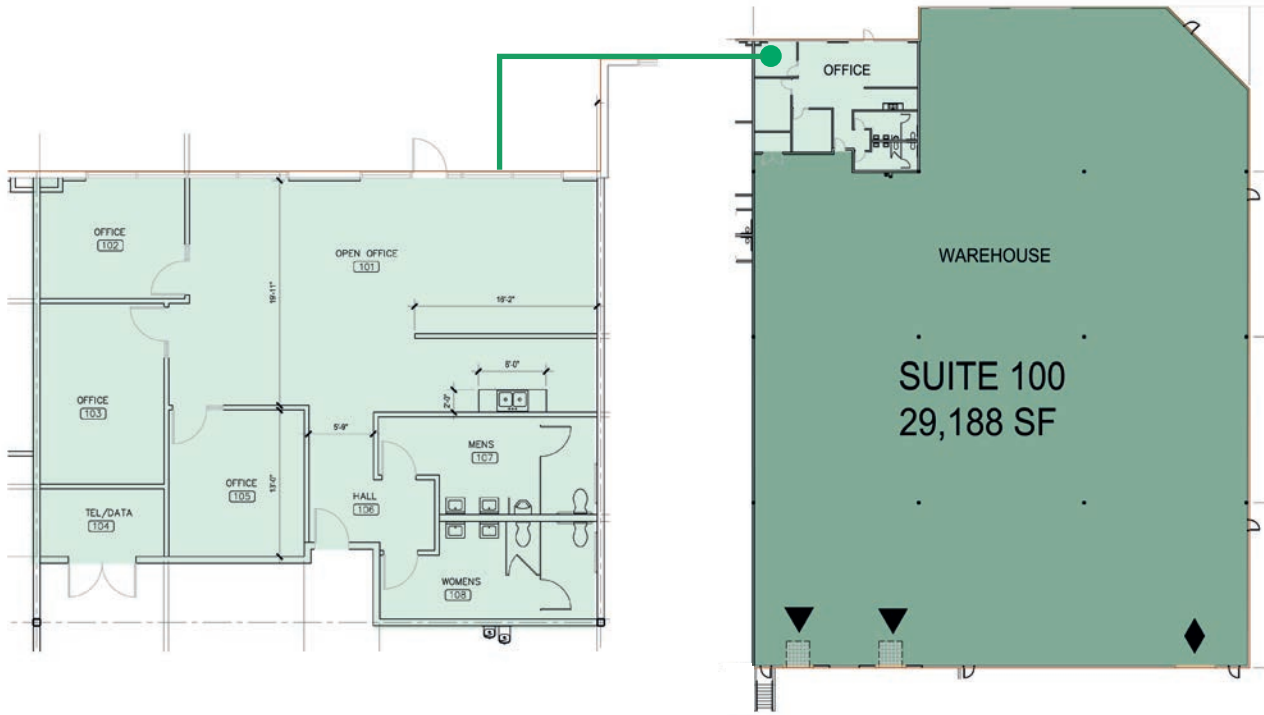
- ±200,450 Total SF
- ±29,188 SF Available
- ±1,827 SF Office
- (2) Dock High Doors
  - (2) Pit Levels
- (1) Grade Level Door
- 30' Clear Height
- ESRF Sprinkler System
- 3-Phase Power, 277/480 volt
- Parking Ratio: 0.86/1,000 SF
- Evaporative Cooled Warehouse

### ADVANTAGES AND AMENITIES

- Functional Design, Turn-key Unit
- Full-span Trusses - No Columns

# ±29,188 SF

## Industrial Space For Lease



\*NOT TO SCALE



### SUITE 100

- ±29,188 SF available
- ±1,827 SF office
- (2) Dock high doors
  - (2) pit levelers
- (1) Grade level door
- 30' Clear height
- ESFR sprinklers
- 3-Phase power, 277/480 volt
- LED lighting
- Evaporative cooled warehouse
- Parking Ratio: 0.86/1,000 SF
- Available Now

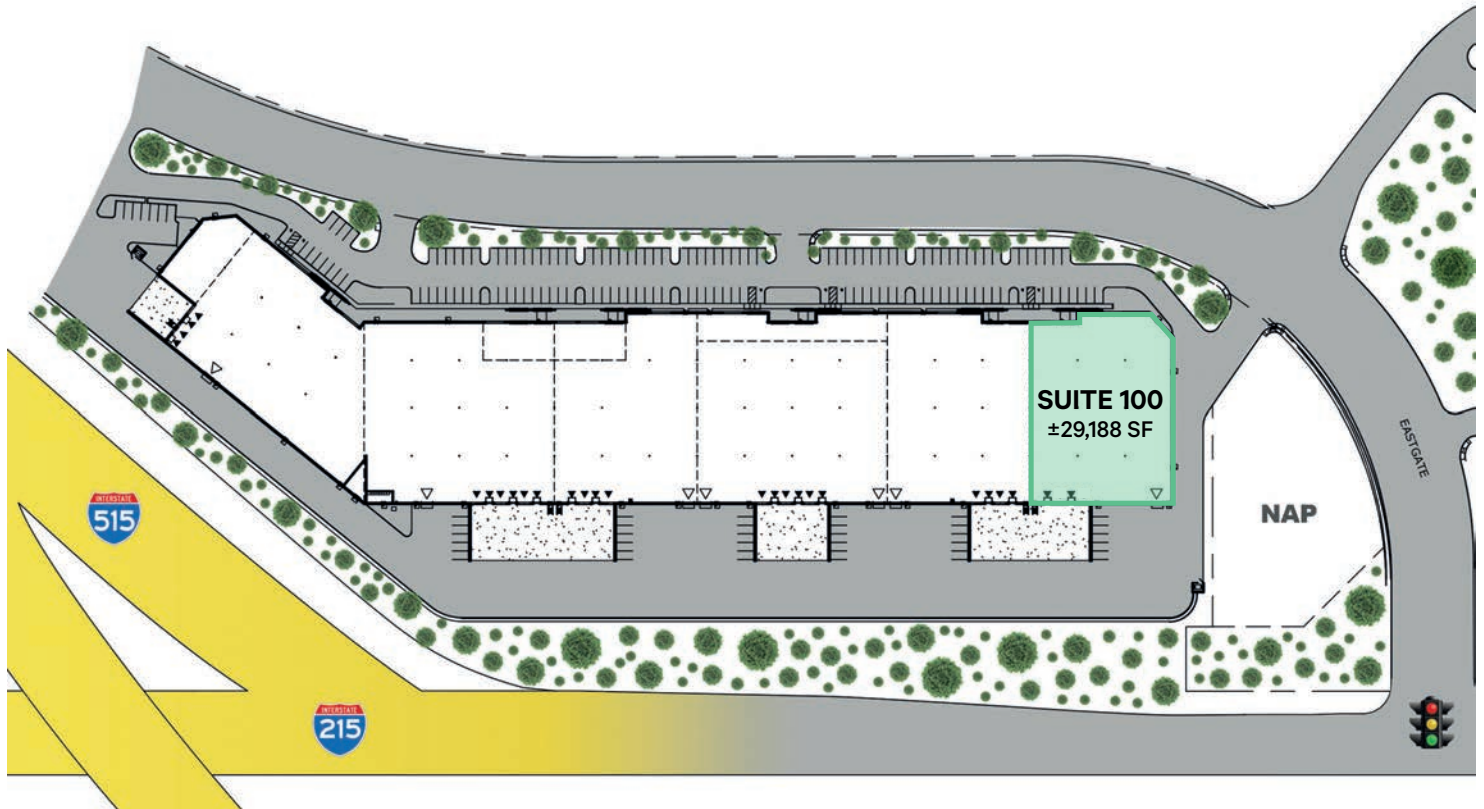
# CBRE

No warranty or representation, expressed or implied, is made as to the accuracy of the information contained herein, and same is submitted subject to error and omissions.

[www.prologis.com](http://www.prologis.com) [www.cbre.us](http://www.cbre.us)

# ±29,188 SF

## Industrial Space For Lease



## CBRE

**CBRE**  
**Jake Higgins, SIOR**  
Senior Vice President  
jake.higgins@cbre.com  
1 702 369 4844  
NV LIC. #S.0176473  
8548 Rozita Lee Ave. Suite 200  
Las Vegas, NV 89113 USA

**CBRE**  
**Kelsey Higgins**  
Associate  
kelsey.higgins@cbre.com  
1 702 369 4812  
NV LIC. #S.0192524  
8548 Rozita Lee Ave. Suite 200  
Las Vegas, NV 89113 USA

**Prologis**  
**Lisa M. Brady**  
Vice President - Market Officer  
lbrady@prologis.com  
1 702 891 9141  
3883 Howard Hughes Pkwy.  
Suite 850  
Las Vegas, NV 89169

No warranty or representation, expressed or implied, is made as to the accuracy of the information contained herein, and same is submitted subject to error and omissions.

[www.prologis.com](http://www.prologis.com) [www.cbre.us](http://www.cbre.us)

# ±29,188 SF

## Industrial Space For Lease



**CBRE**  
Jake Higgins, SIOR  
Senior Vice President  
jake.higgins@cbre.com  
1 702 369 4844  
NV LIC. #S.0176473  
8548 Rozita Lee Ave. Suite 200  
Las Vegas, NV 89113 USA

**CBRE**  
Kelsey Higgins  
Associate  
kelsey.higgins@cbre.com  
1 702 369 4812  
NV LIC. #S.0192524  
8548 Rozita Lee Ave. Suite 200  
Las Vegas, NV 89113 USA

**Prologis**  
Lisa M. Brady  
Vice President - Market Officer  
lbrady@prologis.com  
1 702 891 9141  
3883 Howard Hughes Pkwy.  
Suite 850  
Las Vegas, NV 89169

No warranty or representation, expressed or implied, is made as to the accuracy of the information contained herein, and same is submitted subject to error and omissions.

[www.prologis.com](http://www.prologis.com) [www.cbre.us](http://www.cbre.us)

© 2023 CBRE, Inc. All rights reserved. This information has been obtained from sources believed reliable, but has not been verified for accuracy or completeness. CBRE, Inc. makes no guarantee, representation or warranty and accepts no responsibility or liability as to the accuracy, completeness, or reliability of the information contained herein. You should conduct a careful, independent investigation of the property and verify all information. Any reliance on this information is solely at your own risk. CBRE and the CBRE logo are service marks of CBRE, Inc. All other marks displayed on this document are the property of their respective owners, and the use of such logos does not imply any affiliation with or endorsement of CBRE.