

# 24,660 SF

Industrial Space For Lease



## Prologis Freeport Corporate Center 18



621 South Royal Lane, Suite 500  
Coppell, TX 75019 USA

### LOCATION

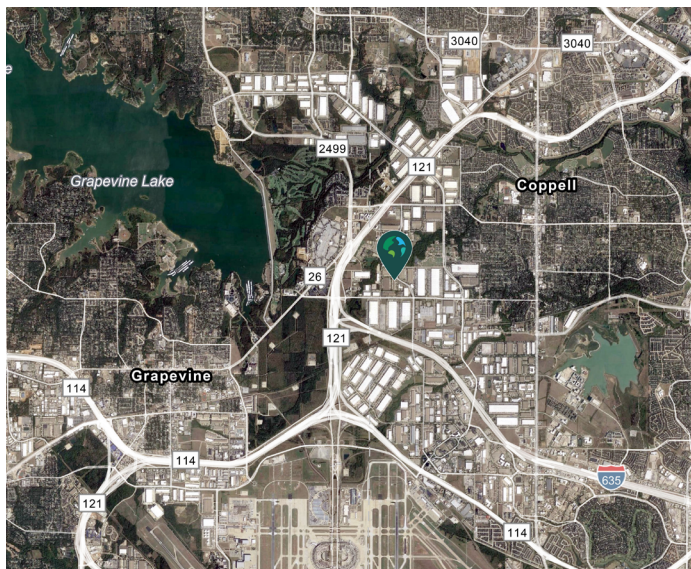
- Located in the North DFW Airport submarket
- Easy access to I-635, SH-121, and DFW Airport

### FACILITY

- 24,660 sf available
- 5,505 sf office
- 24' clear height
- 37'-6" x 40' typical bay spacing
- 4 (9' x 10') overhead dock doors, 1 with leveler
- Fully sprinklered

### ADVANTAGES AND AMENITIES

- Access to the [Prologis Essentials](#) platform, which includes:
  - [Operations Essentials](#)
  - [Energy + Sustainability Essentials](#)
  - [Mobility Essentials](#)
  - [Workforce Essentials](#)



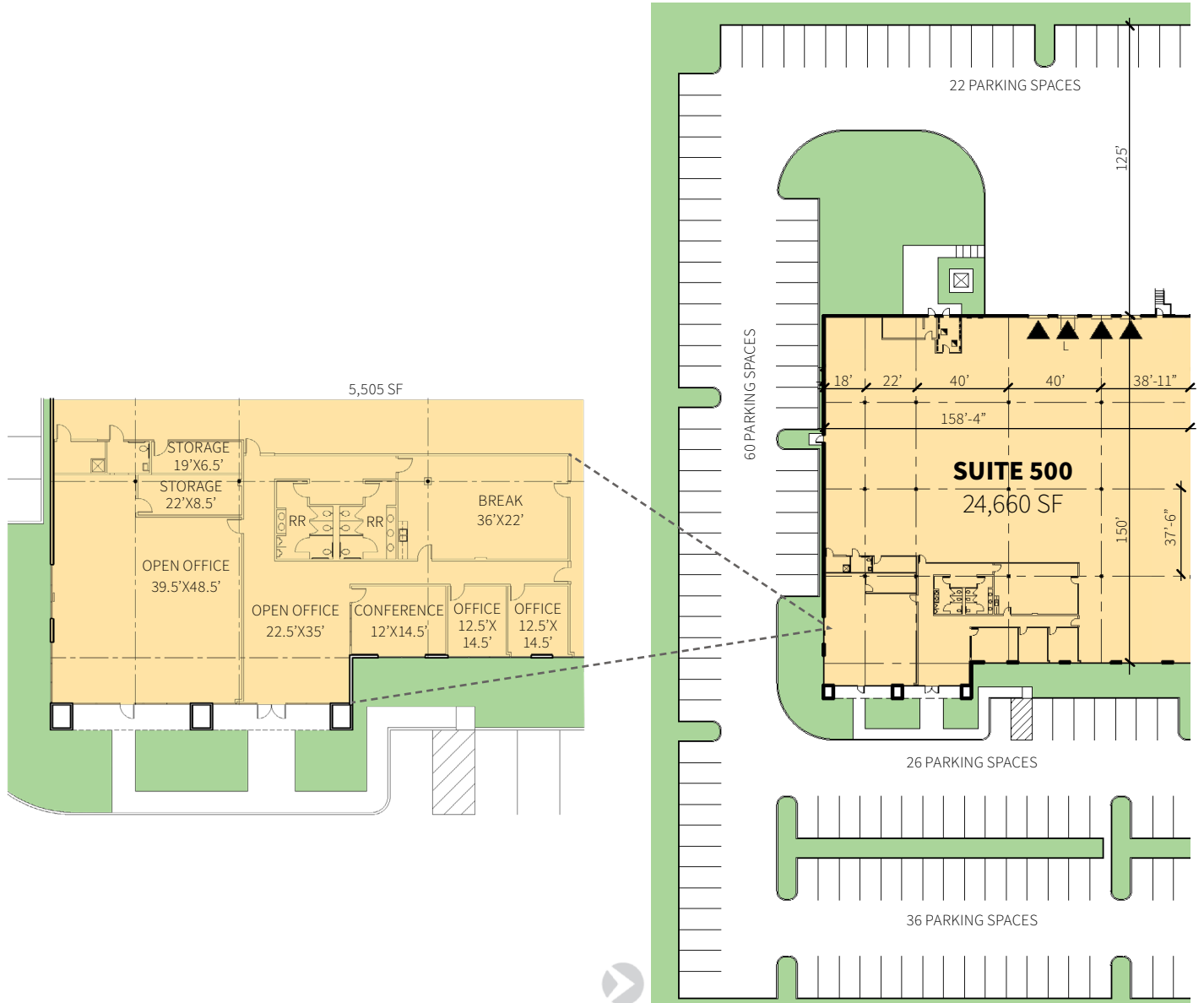
**Prologis Essentials: your single-source service for efficient move-in and operations at [prologisessentials.com](https://prologisessentials.com)**

# 24,660 SF

Industrial Space For Lease



## Prologis Freeport Corporate Center 18



### Transwestern

Brett Owens, SIOR  
brett.owens@transwestern.com  
ph +1 972 774 2568  
cell +1 214 207 8584  
2300 North Field Street  
Suite 2000  
Dallas, TX 75201 USA

### Transwestern

Clayton Johnson  
clayton.johnson@transwestern.com  
ph +1 214 292 6426  
cell +1 469 834 9060  
2300 North Field Street  
Suite 2000  
Dallas, TX 75201 USA

### Prologis

Ahnie Sheehy  
asheehy@prologis.com  
ph +1 972 884 9254  
cell +1 214 914 8324  
2021 McKinney Avenue  
Suite 1050  
Dallas, TX 75201 USA