

1,661 SF

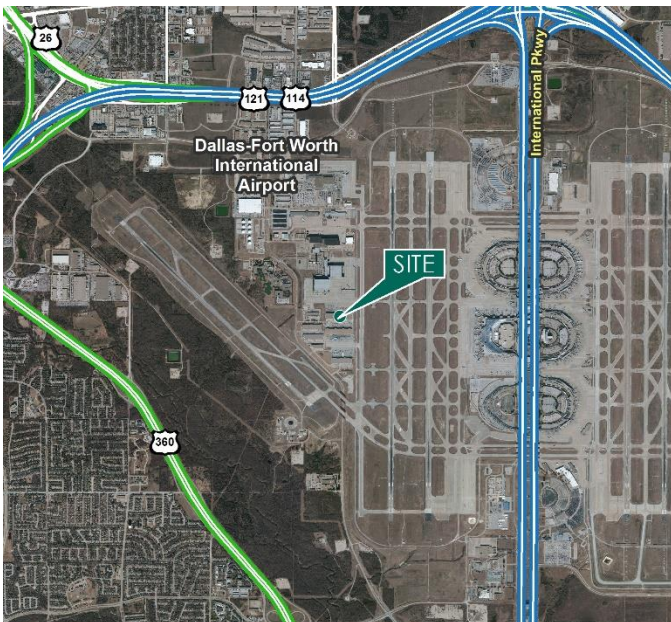
Industrial Space For Lease



Prologis DFW Air Cargo Center



1639 W. 23rd Street, Suite 110
DFW Airport, TX 75261 USA



LOCATION

- Immediate access to DFW International Airport
- Easy access to Hwy 114

FACILITY

- 1,661 sf mezzanine available

ADVANTAGES AND AMENITIES

- Adjacent to major all-cargo operators
- Close proximity to City of Grapevine
- Access to the [Prologis Essentials](#) platform, which includes:
 - [Operations Essentials](#)
 - [Energy Essentials](#)
 - [Workforce Essentials](#)
 - [Transportation Essentials](#)
 - [Digital Essentials](#)

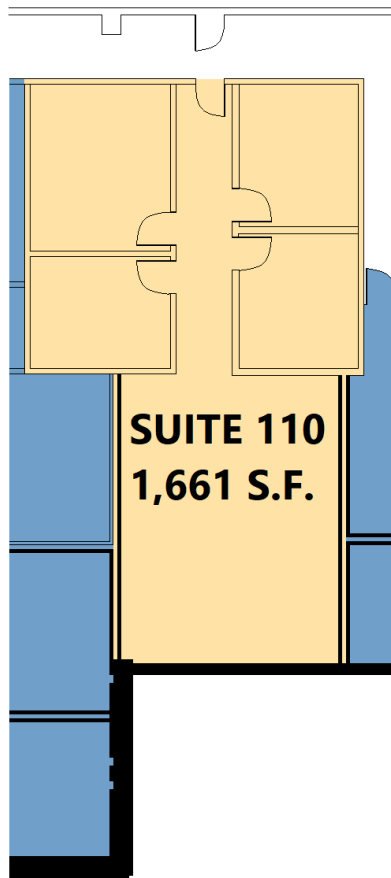
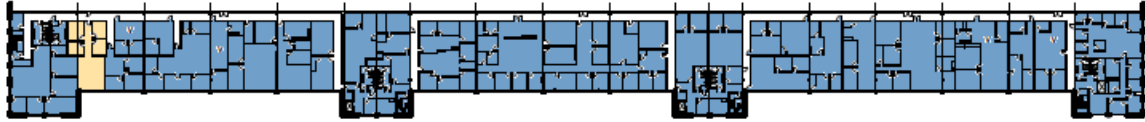
Prologis Essentials: your single-source service for efficient move-in and operations at prologisessentials.com

1,661 SF

Industrial Space For Lease



Prologis DFW Air Cargo Center



Prologis

Keesha Partida
kpartida@prologis.com
ph +1 972 884 9224
cell +1 214 533 1161
2021 McKinney Avenue
Suite 1050
Dallas, TX 75201 USA

Prologis Essentials: your single-source service for efficient move-in and operations at [prologisessentials.com](https://www.prologisessentials.com)

No warranty or representation, expressed or implied, is made as to the accuracy of the information contained herein, and same is submitted subject to error and omissions.