

79,813-158,353 SF

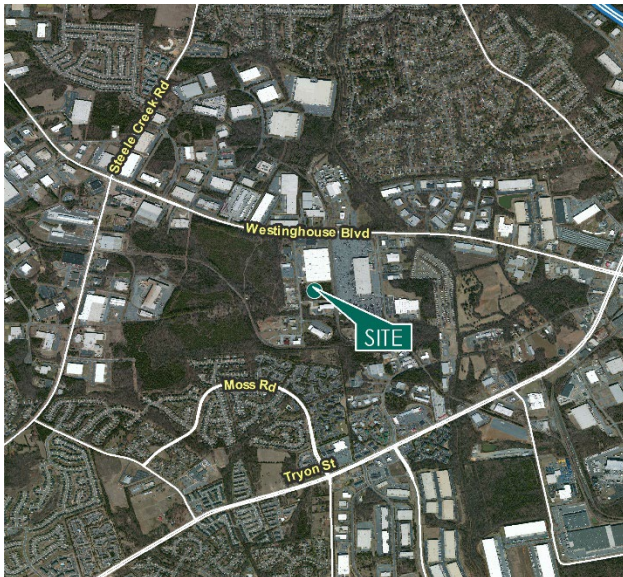
Industrial Space For Lease



Prologis Southwest Charlotte Logistics Center



11710 Goodrich Drive
Charlotte, NC 28273 USA



LOCATION

- In the Southwest submarket- Charlotte's largest industrial submarket
- 10 miles to Charlotte Douglas International Airport
- 5 miles to I-485 and I-77

FACILITY

- Up to 158,353 SF build to suit available
- 36' clear
- 135' truck court
- 93 car parking spaces
- 60' wide x 56" deep column spacing with a 60' staging bay
- 29 dock doors
- 2- drive-in ramps (12' X 14')
- Rear-load facility
- LED warehouse lighting
- Office built to suit customer needs
- Zoned I-2

ADVANTAGES AND AMENITIES

- Prologis Clear Lease-a simplified lease that fixes operating and capital expenses for the entire lease term
- Efficient and cost effective warehouse solutions through Prologis Essentials

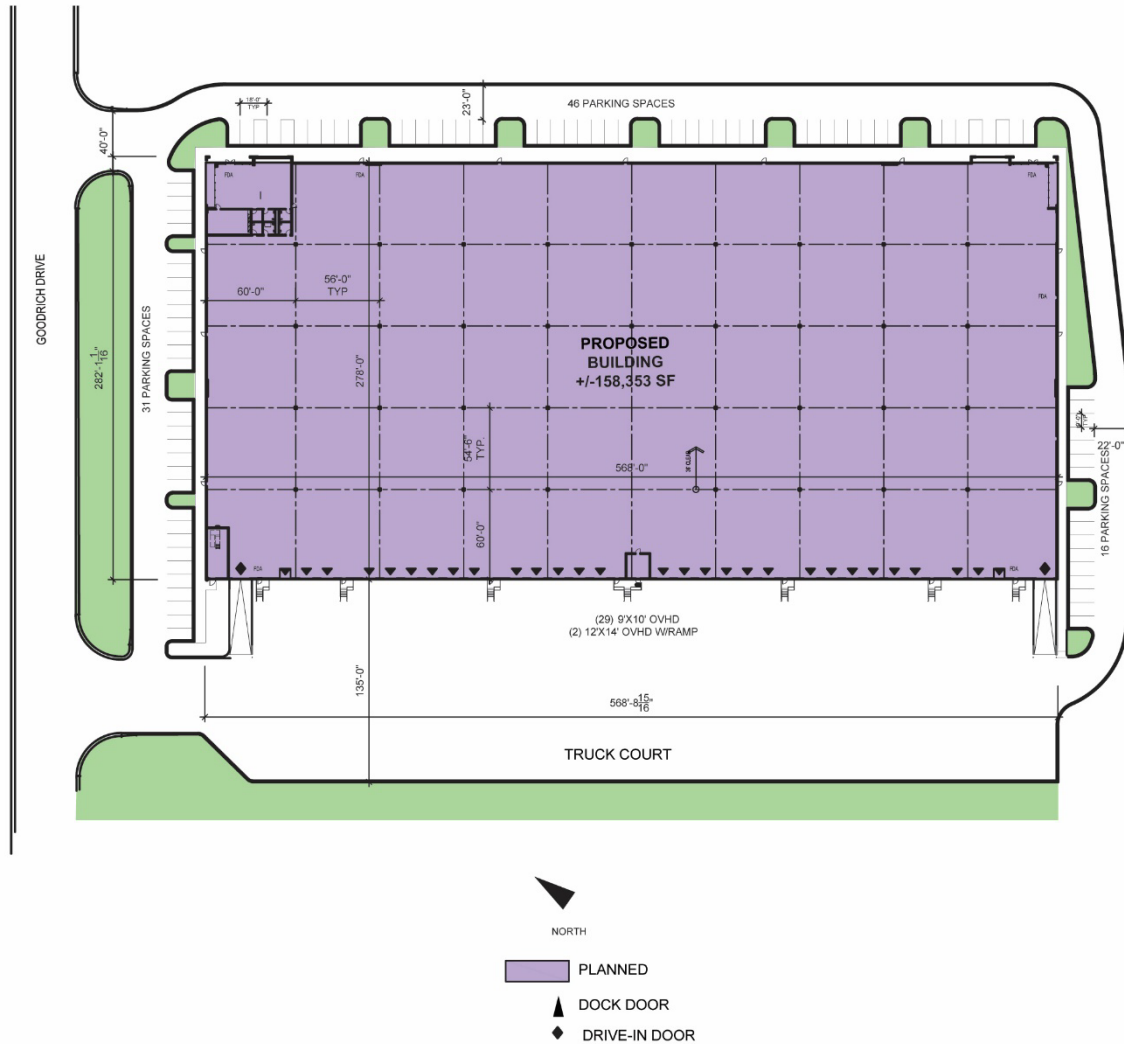
Prologis Essentials: your single-source service for efficient move-in and operations at [prologisessentials.com](https://www.prologisessentials.com)

79,813-158,353 SF

Industrial Space For Lease



Prologis Southwest Charlotte Logistics Center



Cushman & Wakefield

Fermin Deoca
Fermin.Deoca@cushwake.com
ph +1 704 335 4436
cell +1 225 235 7899
300 S Tryon St
Suite 1110
Charlotte, NC 28202 USA

Cushman & Wakefield

Matt Treble
Matt.Treble@cushwake.com
ph +1 704 335 4430
cell +1 615 440 1939
300 S Tryon St
Suite 1110
Charlotte, NC 28202 USA

Prologis

Caitlin Ciniero
cciniero@prologis.com
ph +1 980 422 0807
cell +1 443 745 6463
1900 South Blvd
Suite 302
Charlotte, NC 28203 USA

Prologis

Todd Summerfield
tsummerfield@prologis.com
ph +1 704 426 8002
cell +1 410 441 1145
1900 South Blvd
Suite 302
Charlotte, NC 28203 USA

Prologis Essentials: your single-source service for efficient move-in and operations at prologisessentials.com

No warranty or representation, expressed or implied, is made as to the accuracy of the information contained herein, and same is submitted subject to error and omissions.