

# 53,020 SF



Industrial Space For Lease

## Prologis Park Trans-Pacific



3900C2 Industry Drive East  
Fife, WA 98424 USA



### LOCATION

- Located between exit 136 and exit 137 on Interstate 5
- Three miles to the Port of Tacoma main gate
- No City of Fife B&O taxes
- Union Pacific Rail service

### FACILITY

- Shell space: 53,020 SF
- Warehouse space: 47,317 SF
- First floor office space: 5,703 SF
- Second floor space: 3,737 SF
- Dock doors: 12 (3 with levelers)
- Grade level doors: 1
- Rail doors: 3
- Demised down to 37,920 SF - 15,100 SF

**Prologis Essentials: your single-source service for efficient move-in and operations at [prologisessentials.com](https://www.prologisessentials.com)**

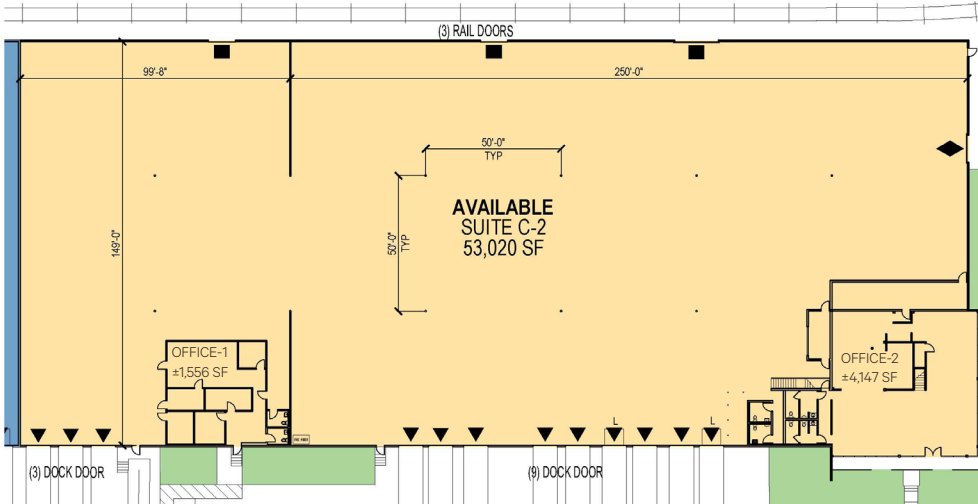
# 53,020 SF

## Industrial Space For Lease



# Prologis Park Trans-Pacific

### First Floor

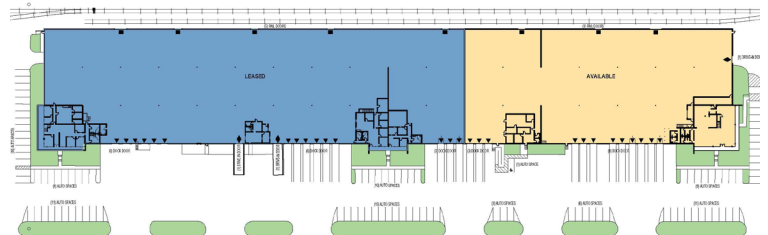
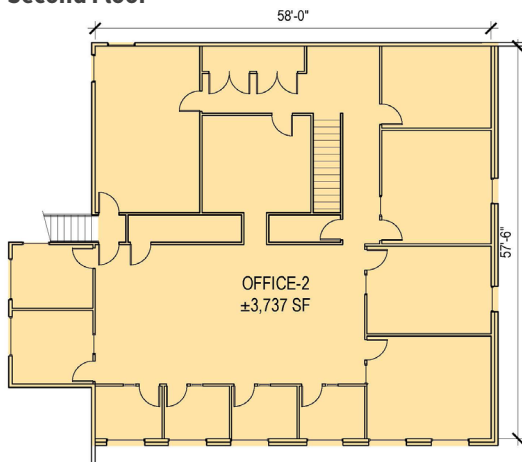


### LEGEND:

- ▼ DOCK DOOR
- ▼ DOCK DOOR W/ LEVEL
- ◆ DRIVE-IN DOOR
- RAIL DOOR
- AVAILABLE AREA



### Second Floor



### CBRE, Inc.

Monte Decker, CCIM  
monte.decker@cbre.com  
ph +1 253 596 0041  
1201 Pacific Avenue  
Suite 1502  
Tacoma, WA 98402 USA

### Prologis

Mark Roddy  
mroddy@prologis.com  
ph +1 206 414 7617  
12720 Gateway Drive  
Suite 110  
Tukwila, WA 98168 USA

© 2023 CBRE, Inc. All rights reserved. This information has been obtained from sources believed reliable but has not been verified for accuracy or completeness. You should conduct a careful, independent investigation of the property and verify all information. Any reliance on this information is solely at your own risk. SD 8.4.23

**Prologis Essentials: your single-source service for efficient move-in and operations at [prologisessentials.com](https://prologisessentials.com)**

No warranty or representation, expressed or implied, is made as to the accuracy of the information contained herein, and same is submitted subject to error and omissions.