

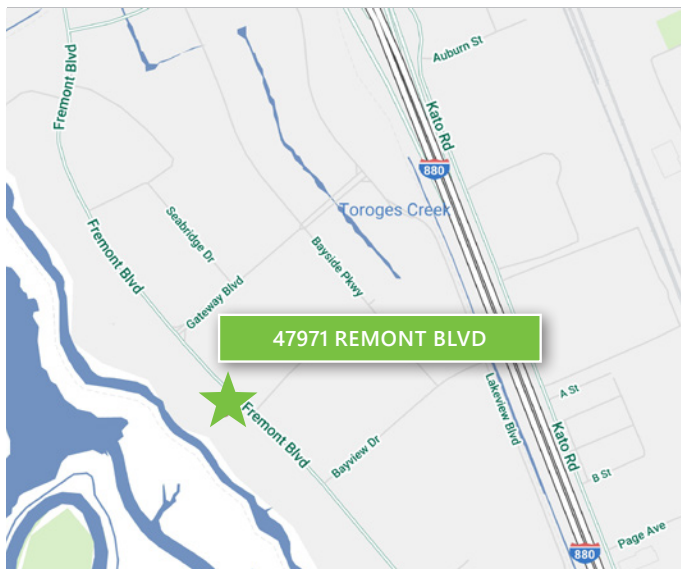
# ±8,550 SF

## R&D Space For Lease



## Prologis Park Bayside

47971 Fremont Blvd  
Fremont, CA 94538



### LOCATION

- Situated in the desirable Bayside area of Fremont
- Easy access to I-880, I-680, and Hwy 237
- Minutes from new Warm Springs BART station

### FACILITY

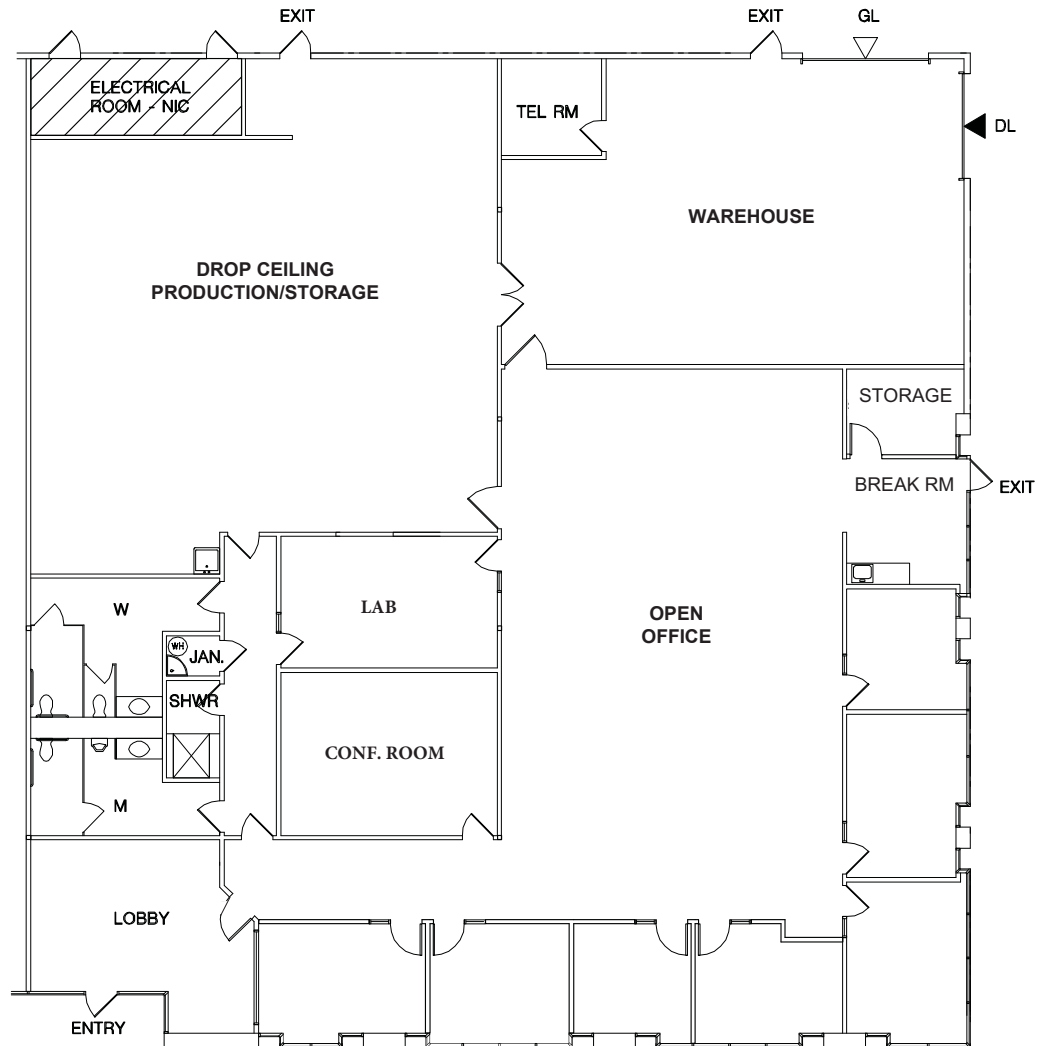
- ±8,550 SF
- Great window line along Fremont Blvd!
- 50% office, 25% drop ceiling production, 25% warehouse
- 18' clear height
- Dock and grade loading
- 200 amps @ 277/480v
- Available March 2020

### ADVANTAGES AND AMENITIES

- New park amenities in place with additional amenities on the horizon
- Expansion opportunities available within the 1.3M SF park.

# ±8,550 SF

## R&D Space For Lease



▽ DOCK HIGH DOOR  
▼ GRADE LEVEL DOOR

NOT TO SCALE

# CBRE

[www.prologis.com](http://www.prologis.com) [www.cbre.us](http://www.cbre.us)

# ±8,550 SF

## R&D Space For Lease



### Amenities Map



# CBRE

[www.prologis.com](http://www.prologis.com) [www.cbre.us](http://www.cbre.us)



# ±8,550 SF

## R&D Space For Lease



FOR MORE INFORMATION PLEASE CONTACT:

**Thomas Taylor**  
Executive Vice President  
Lic. 00944083  
thomas.taylor@cbre.com  
ph +1 408 453 7417

**Sherman Chan**  
Senior Vice President  
Lic. 01046769  
sherman.chan@cbre.com  
ph +1 408 453 7488

**Vince Machado**  
Senior Vice President  
Lic. 01317553  
vince.machado@cbre.com  
ph +1 408 453 7411

**Matthew Taylor**  
Senior Vice President  
Lic. 01897355  
matthew.taylor@cbre.com  
ph +1 408 453 7469



[www.prologis.com](http://www.prologis.com) [www.cbre.us](http://www.cbre.us)

© 2019 CBRE, Inc. All rights reserved. This information has been obtained from sources believed reliable, but has not been verified for accuracy or completeness. You should conduct a careful, independent investigation of the property and verify all information. Any reliance on this information is solely at your own risk. CBRE and the CBRE logo are service marks of CBRE, Inc. All other marks displayed on this document are the property of their respective owners. Photos herein are the property of their respective owners. Use of these images without the express written consent of the owner is prohibited.