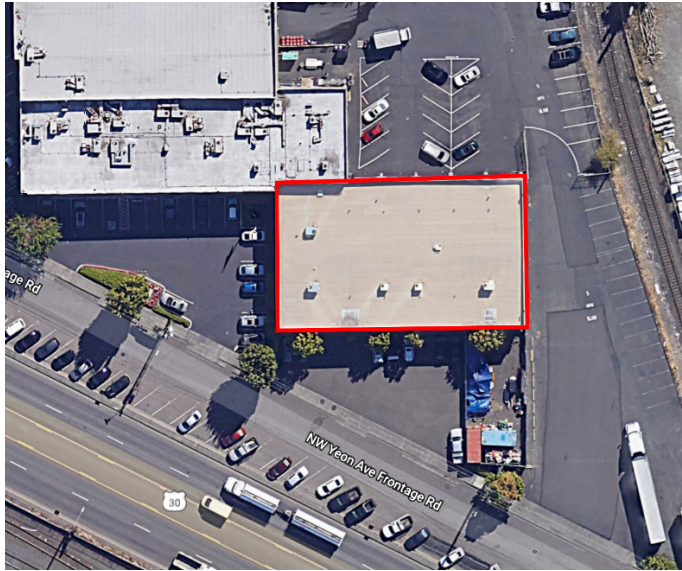


11,740 SF

Showroom/Warehouse Space For Lease



CALL FOR RATES



Northwest Corporate Park, Building 11

3621 NW Yeon Avenue, Portland, OR 97217



LOCATION

- Northwest Corporate Park is an 888,000 SF industrial park and is the largest in the Northwest Portland/ Guild's Lake area. The Park includes support services such as restaurants and a major bank. Located on Yeon Avenue with easy access to major freeways and the downtown core area.

FACILITY

- 11,740 SF of showroom/warehouse fronting NW Yeon Avenue. The 7,379 SF office/showroom is flooded with natural light and high ceilings. The office area includes 4 private offices. The warehouse totals 4,326 SF. has 4 drive-in grade doors, T-5 lighting, and is fully sprinklered.

ADVANTAGES AND AMENITIES

- Full glass line on building front for naturally lit showroom
- Direct access and visibility to high traffic NW Yeon Avenue
- Ample parking directly adjacent to showroom space



11,740 SF

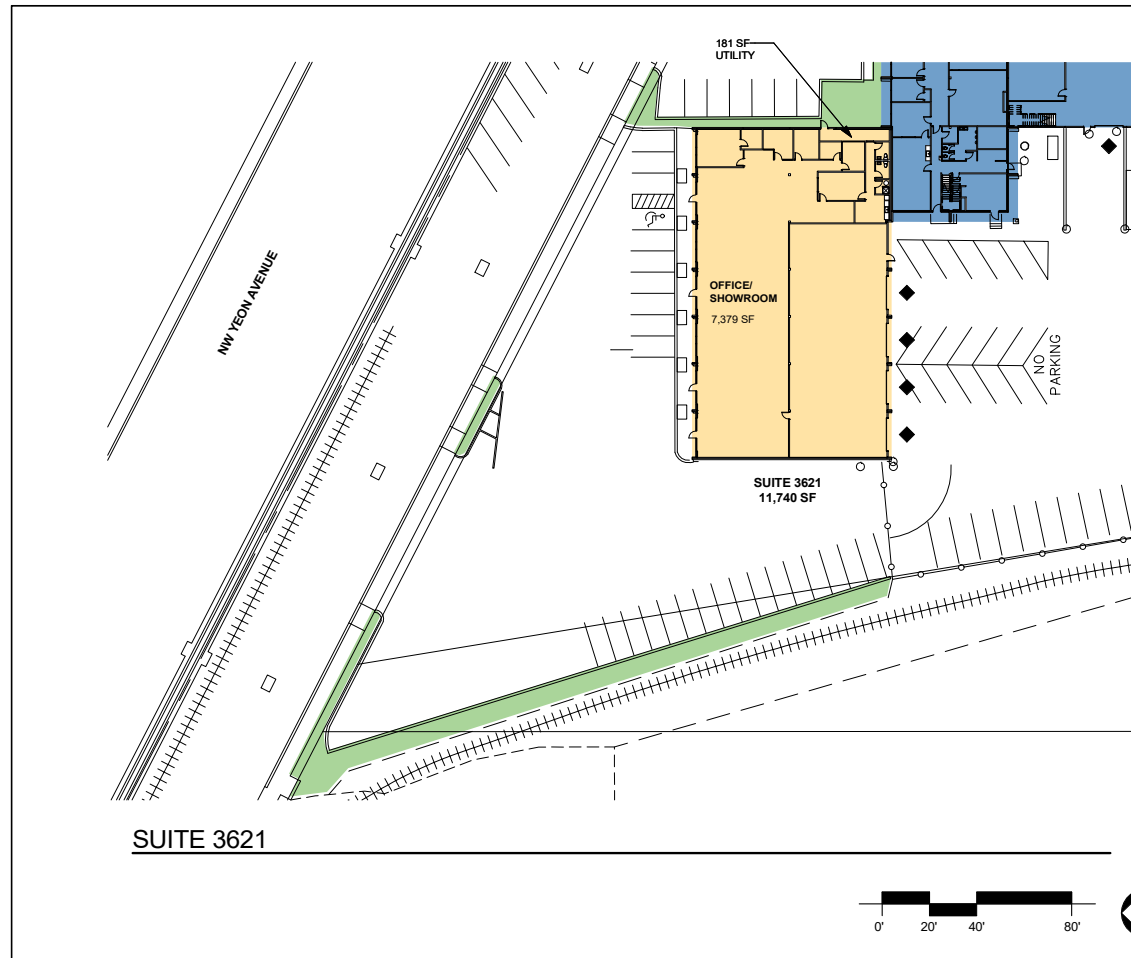
Showroom/Warehouse Space For Lease



CALL FOR RATES

Broker
Todd Collins
todd@macadamforbes.com
ph +1 503 972 7283

Broker
Joe Curran
jcurran@macadamforbes.com
ph +1 503 972 7283



NORTHWEST CORPORATE PARK
PORTLAND, OR

BUILDING 11

AVAILABLE FOOTPRINT:	11,740 SF
OFFICE:	7,379 SF

AVAILABLE DOCK DOORS:	0
AVAILABLE DRIVE IN DOORS:	4
	0

LEGEND

- ◆ DRIVE IN DOOR
- ▼ DOCK DOOR
- SUITE 3621
- SUITE 3601
- LAND

PROLOGIS
4380 SW Macadam Ave, Suite 285,
Portland, Oregon 97239
Telephone: (503) 276.7373
Facsimile: (503) 276.7372

M Portland Vancouver Seattle
Architects - Interiors
Planning - Engineering

APRIL 30, 2021 2180507.00