

31,174 SF

Industrial Space For Lease



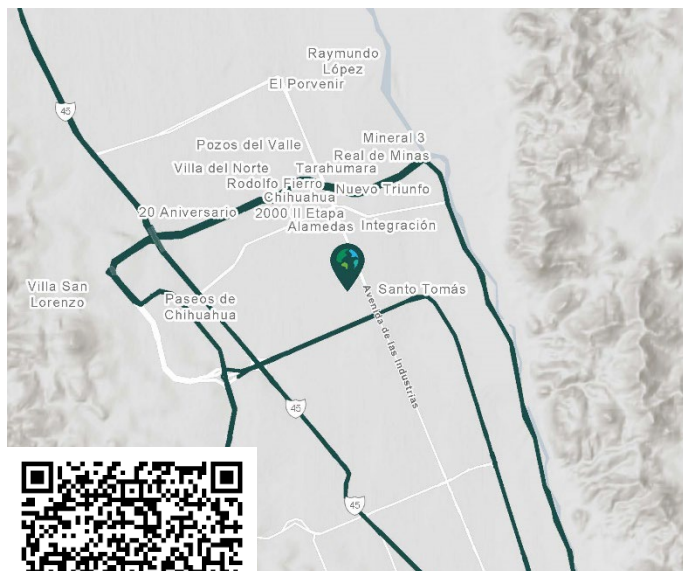
Prologis Park CIC Industrial Center 14 A



Alejandro Dumas 11321, Complejo Industrial Chihuahua Chih, Chihuahua, Mexico

LOCATION

- Approximately 15 miles from the Chihuahua International Airport
- Located in the Complejo Industrial Chihuahua.
- Approximately 12 miles from the highway.



FACILITY

- Clear height: 26'
- Bay spacing: 25' x 54'
- Dock doors: 3
- Drive-in-doors: 1
- Construction type: concrete block
- Floor thickness: 6"
- Roof type: KR-18
- Fire suppression system: ESFR
- Substation capacity 2,000 KVA's
- Office area: 6,616.24 SF
- A/C evaporative coolers
- Offices type lighting: Fluorescent
- Warehouse type lighting: LED

ADVANTAGES AND AMENITIES

- 24/7 Security.
- Strategic location for business.
- Accessibility and parking.

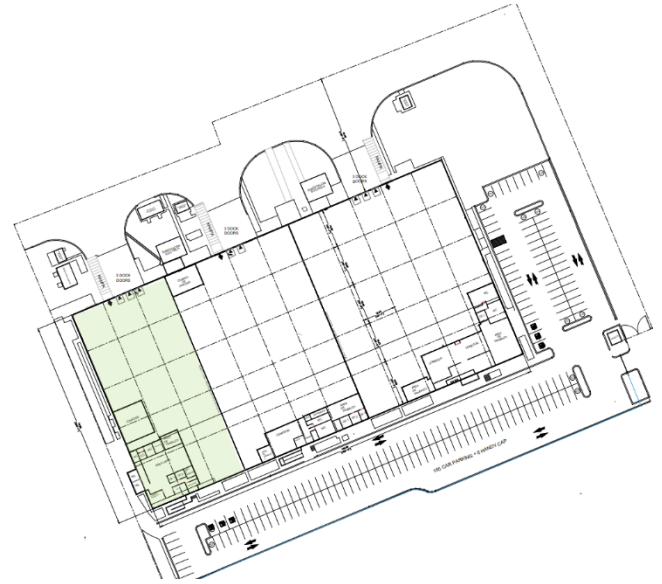
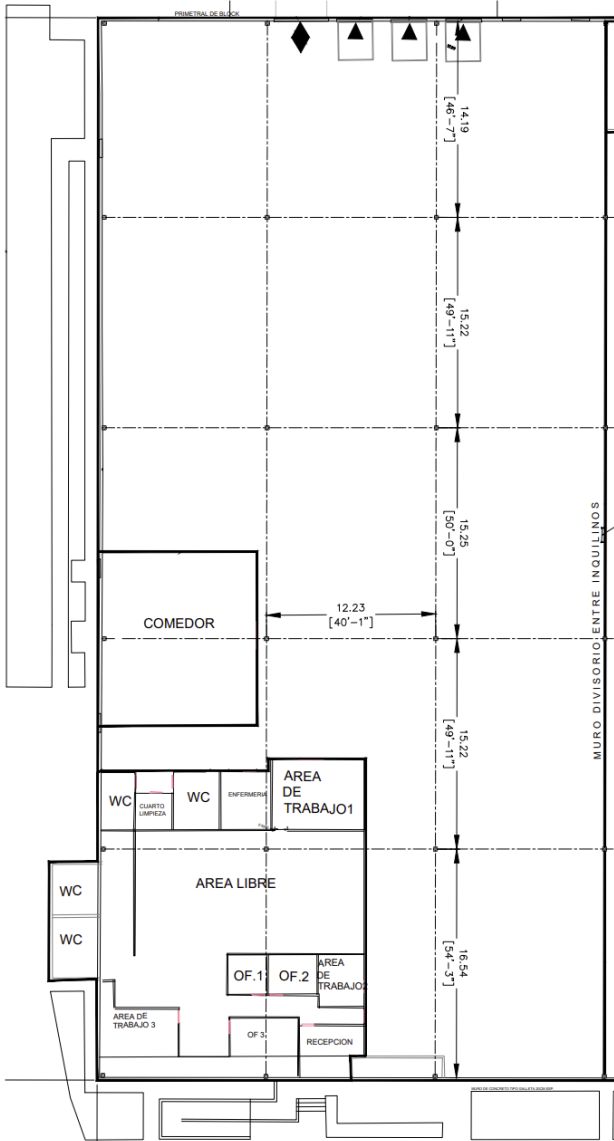
Your single-source service for efficient move-in and operations: [prologisessentials.com](https://www.prologisessentials.com)

31,174 SF

Industrial Space For Lease



Prologis Park CIC Industrial Center 14 A



CBRE

Andrés Sandoval
Executive Vice President
andres.sandoval@cbre.com
ph +1 915 241 2139

Prologis

Kathya Hernandez
Leasing Manager
khernandez@prologis.com
ph +52 656 295 3101