

M | Desert Bloom 24" x 24" PRODUCT SPECIFICATIONS

STYLE NUMBER	80101
PRODUCT TYPE	Modular
CONSTRUCTION	Multi-Level Pattern Loop
FIBER TYPE	Solution Q Extreme®
DYE METHOD	100% Solution Dyed
PRIMARY BACKING	Non-Woven Synthetic
SECONDARY BACKING	Ecworx

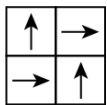
US Units

PRODUCT SIZE	24 inches x 24 inches
GAUGE	1/10 inches
STITCHES	11 per inches
FINISHED PILE THICKNESS	0.086 inches
AVERAGE DENSITY	6698 oz/yd ³
TOTAL THICKNESS	0.229 inches
TUFTED YARN WEIGHT	16 oz/yd ²

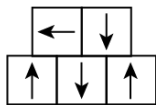
Metric Units

60.96 cm x 60.96 cm
39.37 per 10 cm
45 per 10 cm
2.18 mm
5.82 mm
542.5 g/m ²

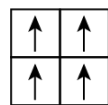
Installation Methods



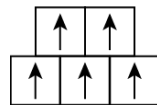
1/4 Turn



Random



Monolithic



Brick

Performance Testing

PILL TEST	Pass
RADIANT PANEL	Class I
NBS SMOKE	Less than 450
ELECTROSTATIC PROPENSITY	Less than 3.5 kv
CRI GREENLABEL PLUS	GLP9968
ADA COMPLIANCE	>0.6, meets the recommended static coefficient of friction for ADA walking surfaces and accessible routes