

# M | Welcome In PRODUCT SPECIFICATIONS

<b>STYLE NUMBER</b>	802R0
<b>PRODUCT TYPE</b>	Modular
<b>CONSTRUCTION</b>	Multi-Level Pattern Loop
<b>FIBER TYPE</b>	EcoSolution Q® Nylon
<b>DYE METHOD</b>	100% Solution Dyed
<b>PRIMARY BACKING</b>	Non-Woven Synthetic
<b>SECONDARY BACKING</b>	Ecworx

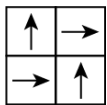
**US Units**

<b>PRODUCT SIZE</b>	24 inches x 24 inches
<b>GAUGE</b>	1/12 inches
<b>STITCHES</b>	10 per inches
<b>FINISHED PILE THICKNESS</b>	0.085 inches
<b>AVERAGE DENSITY</b>	11012 oz/yd <sup>3</sup>
<b>TOTAL THICKNESS</b>	0.259 inches
<b>TUFTED YARN WEIGHT</b>	26 oz/yd <sup>2</sup>

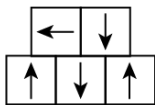
**Metric Units**

60.96 cm x 60.96 cm
47.24 per 10 cm
41 per 10 cm
2.16 mm
6.58 mm
881.5 g/m <sup>2</sup>

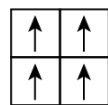
## Installation Methods



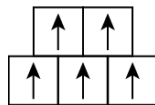
1/4 Turn



Random



Monolithic



Brick

## Performance Testing

<b>PILL TEST</b>	Pass
<b>RADIANT PANEL</b>	Class I
<b>NBS SMOKE</b>	Less than 450
<b>ELECTROSTATIC PROPENSITY</b>	Less than 3.5 kv
<b>CRI GREENLABEL PLUS</b>	GLP9968
<b>ADA COMPLIANCE</b>	>0.6, meets the recommended static coefficient of friction for ADA walking surfaces and accessible routes

# M | Walk It Off PRODUCT SPECIFICATIONS

<b>STYLE NUMBER</b>	802R1
<b>PRODUCT TYPE</b>	Modular
<b>CONSTRUCTION</b>	Multi-Level Pattern Loop
<b>FIBER TYPE</b>	Eco Solution Q® Nylon
<b>DYE METHOD</b>	100% Solution Dyed
<b>PRIMARY BACKING</b>	Non-Woven Synthetic
<b>SECONDARY BACKING</b>	Ecoworx

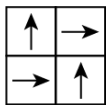
### US Units

<b>PRODUCT SIZE</b>	24 inches x 24 inches
<b>GAUGE</b>	1/12 inches
<b>STITCHES</b>	10 per inches
<b>FINISHED PILE THICKNESS</b>	0.111 inches
<b>AVERAGE DENSITY</b>	9081 oz/yd <sup>3</sup>
<b>TOTAL THICKNESS</b>	0.279 inches
<b>TUFTED YARN WEIGHT</b>	28 oz/yd <sup>2</sup>

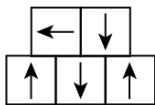
### Metric Units

60.96 cm x 60.96 cm
47.24 per 10 cm
41 per 10 cm
2.82 mm
7.09 mm
949.4 g/m <sup>2</sup>

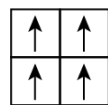
## Installation Methods



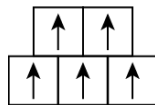
1/4 Turn



Random



Monolithic



Brick

## Performance Testing

<b>PILL TEST</b>	Pass
<b>RADIANT PANEL</b>	Class I
<b>NBS SMOKE</b>	Less than 450
<b>ELECTROSTATIC PROPENSITY</b>	Less than 3.5 kv
<b>CRI GREENLABEL PLUS</b>	GLP9968
<b>ADA COMPLIANCE</b>	>0.6, meets the recommended static coefficient of friction for ADA walking surfaces and accessible routes

**M** | First Step PRODUCT SPECIFICATIONS

<b>STYLE NUMBER</b>	802R2
<b>PRODUCT TYPE</b>	Modular
<b>CONSTRUCTION</b>	Hobnail
<b>FIBER TYPE</b>	Polyester
<b>DYE METHOD</b>	100% Solution Dyed
<b>PRIMARY BACKING</b>	Polypropylene
<b>SECONDARY BACKING</b>	Ecworx

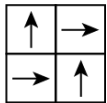
**US Units**

<b>PRODUCT SIZE</b>	24 inches x 24 inches
<b>STITCHES</b>	0 per inches
<b>FINISHED PILE THICKNESS</b>	0.274 inches
<b>AVERAGE DENSITY</b>	6477 oz/yd <sup>3</sup>
<b>TOTAL THICKNESS</b>	0.362 inches
<b>TUFTED YARN WEIGHT</b>	49.3 oz/yd <sup>2</sup>
<b>INSTALLATION PATTERN REPEAT</b>	0.03 ft W X 0.03 ft L

**Metric Units**

60.96 cm x 60.96 cm
1 per 10 cm
6.96 mm
9.19 mm
1671.6 g/m <sup>2</sup>
0.95 cm W X 0.95 cm L

Installation Methods



1/4 Turn

Performance Testing

<b>PILL TEST</b>	Pass
<b>RADIANT PANEL</b>	Class I
<b>NBS SMOKE</b>	Less than 450
<b>ELECTROSTATIC PROPENSITY</b>	Less than 3.5 kv
<b>CRI GREENLABEL PLUS</b>	GLP0520
<b>ADA COMPLIANCE</b>	>0.6, meets the recommended static coefficient of friction for ADA walking surfaces and accessible routes

# M | First Step

## Warranty

Lifetime Commercial Limited

Please visit [patcraft.com](https://patcraft.com) for the most current warranty information.

Specifications are subject to nominal manufacturing variances. Material supply and/or manufacturing processes may necessitate specification changes without notice. This carpet is an exclusive design and may not be duplicated in any manner. Use of this design in the creation of another carpet design is also strictly prohibited. Visit [patcraft.com/testing](https://patcraft.com/testing) for more information.