

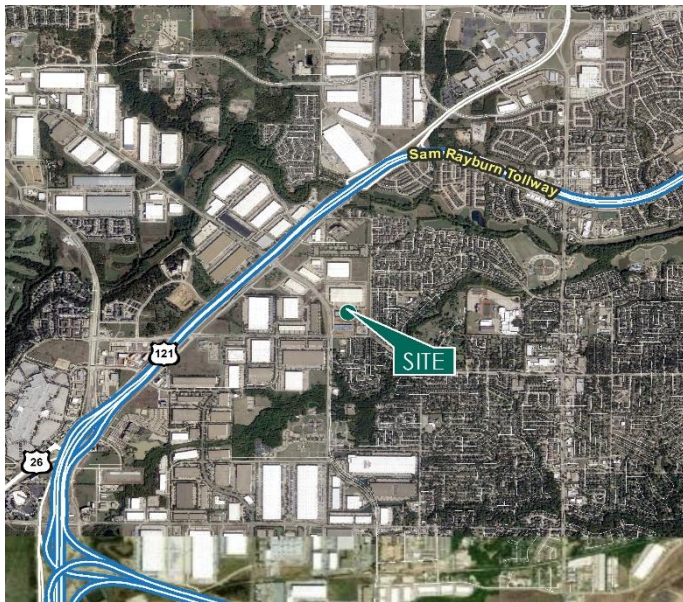
# 31,400 SF

## Industrial Space For Lease



## Prologis Park 121

180 N. Freeport Parkway, Suite 100  
Coppell, Texas 75019 USA



### LOCATION

- Located off intersection of SH 121 and Freeport Parkway, as part of our premier 1.4M sf master-planned park
- Direct frontage on SH 121 provides immediate access to I-635, DFW Airport, SH 114, and I-35E

### FACILITY

- 31,400 sf available
- 2,811 sf spec office
- 32' clear height
- 8 (9' x 10') dock doors
- 1 (12'x14') drive-in door
- 24 auto parking spaces
- ESFR sprinkler system

### ADVANTAGES AND AMENITIES

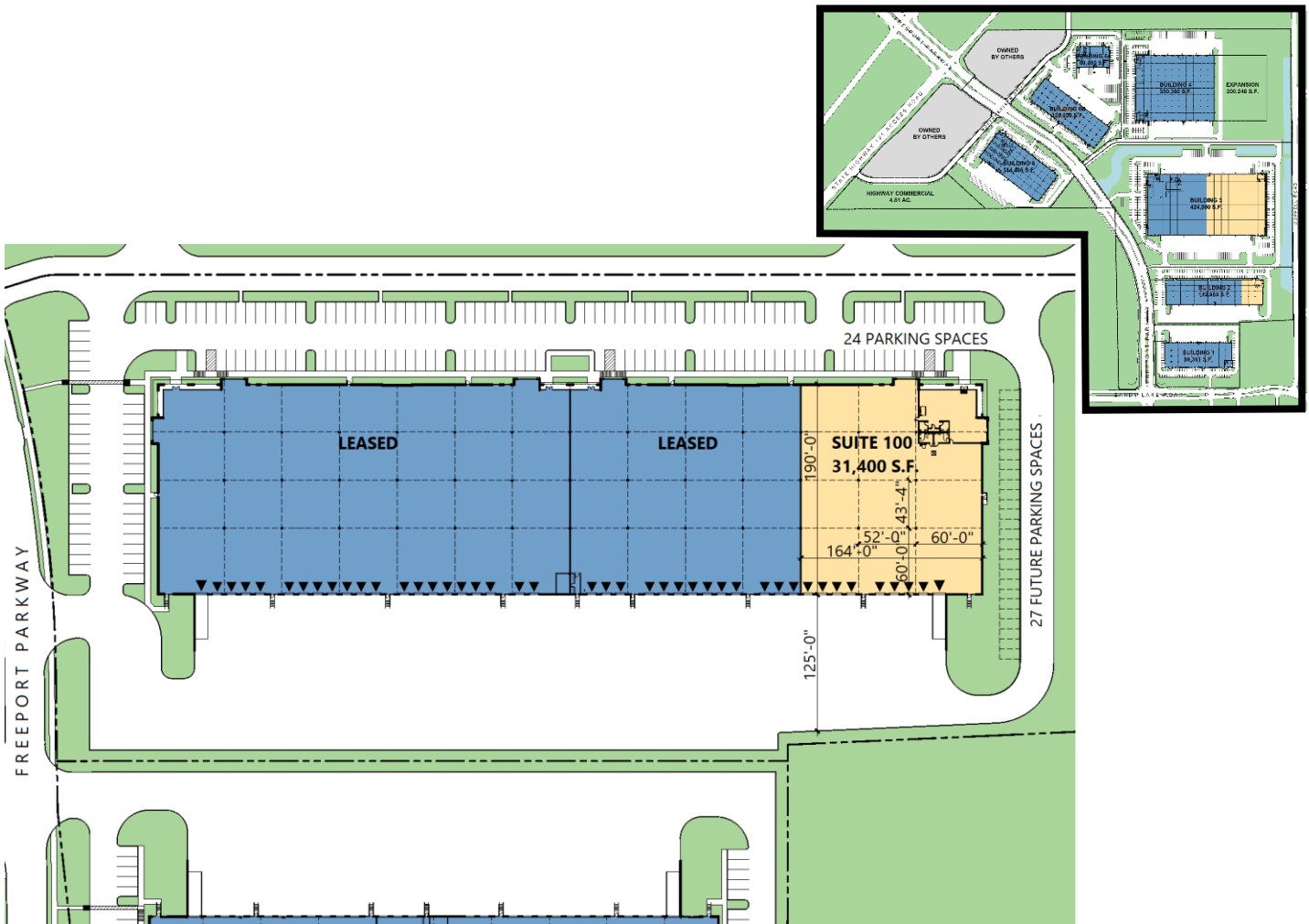
- Premier, hard corner visibility at Sandy Lake Road and Freeport Parkway
- Business-friendly municipality offering Triple Freeport and tax abatement for customers
- Six (6) upper/upper-middle class bedroom communities within a 10-mile radius

Click or Scan  
for Virtual Tour:



# 31,400 SF

## Industrial Space For Lease



### CBRE

**Steve Trese**

steve.trese@cbre.com  
ph +1 214 979 6534  
cell +1 214 354 8463  
2100 McKinney Avenue  
Suite 700  
Dallas, TX 75201 USA

### CBRE

**Krista Raymond**

krista.raymond@cbre.com  
ph +1 214 979 6501  
cell +1 972 971 2785  
2100 McKinney Avenue  
Suite 700  
Dallas, TX 75201 USA

### CBRE

**Nathan Lawrence**

nathan.lawrence@cbre.com  
ph +1 214 979 6558  
cell +1 214 402 6016  
2100 McKinney Avenue  
Suite 700  
Dallas, TX 75201 USA

### Prologis

**Whitney Williamson**

williamson@prologis.com  
ph +1 972 884 9244  
cell +1 817 781 5186  
2021 McKinney Avenue  
Suite 1050  
Dallas, TX 75201 USA