

±7,251 SF



Office/R&D Space For Lease



TriPoint Business Park

1841 Zanker Road, Suite 10
San Jose, CA 95112

LOCATION

1841 Zanker Road of TriPoint Business Park is located on the corner of Zanker Road and Devcon Drive and parallels Highway 101 in San Jose, CA.

FACILITY

- Class "A" Interiors Throughout
- LEED Silver Certified Rehab Project
- Expanded Window Line
- 10.5' Drop Ceiling Throughout
- Great Expansion Potential within the Park
- ±3.47/1,000 Parking

ADVANTAGES AND AMENITIES

- Walking Distance to Light Rail Station
- Two Blocks from 24 Hour Fitness
- Less than One Mile from San Jose International Airport



±7,251 SF



Office/R&D Space For Lease



Alan Guterman
alan.guterman@cushwake.com
ph +1 408 615 3414
cell +1 408 888 0881
Lic #00884495
300 Santana Row, Fifth Floor
San Jose, CA 95128

Jon DeCoite
jon.decoite@cushwake.com
ph +1 408 615 3408
cell +1 408 843 3499
LIC #01471300
300 Santana Row, Fifth Floor
San Jose, CA 95128

Kelly Yoder
kelly.yoder@cushwake.com
ph +1 408 615 3427
cell +1 408 439 6672
LIC #01821117
300 Santana Row, Fifth Floor
San Jose, CA 95128

Steve Horton
steve.horton@cushwake.com
ph +1 408 615 3412
cell +1 408 726 1010
LIC #01127340
300 Santana Row, Fifth Floor
San Jose, CA 95128

Amy Pallas
apallas@prologis.com
ph +1 510 661 4087
cell +1 650 380 3129
LIC #00935272
3353 Gateway Boulevard
Fremont, CA 94538

[View Site Specific COVID-19 Prevention Plan](#)

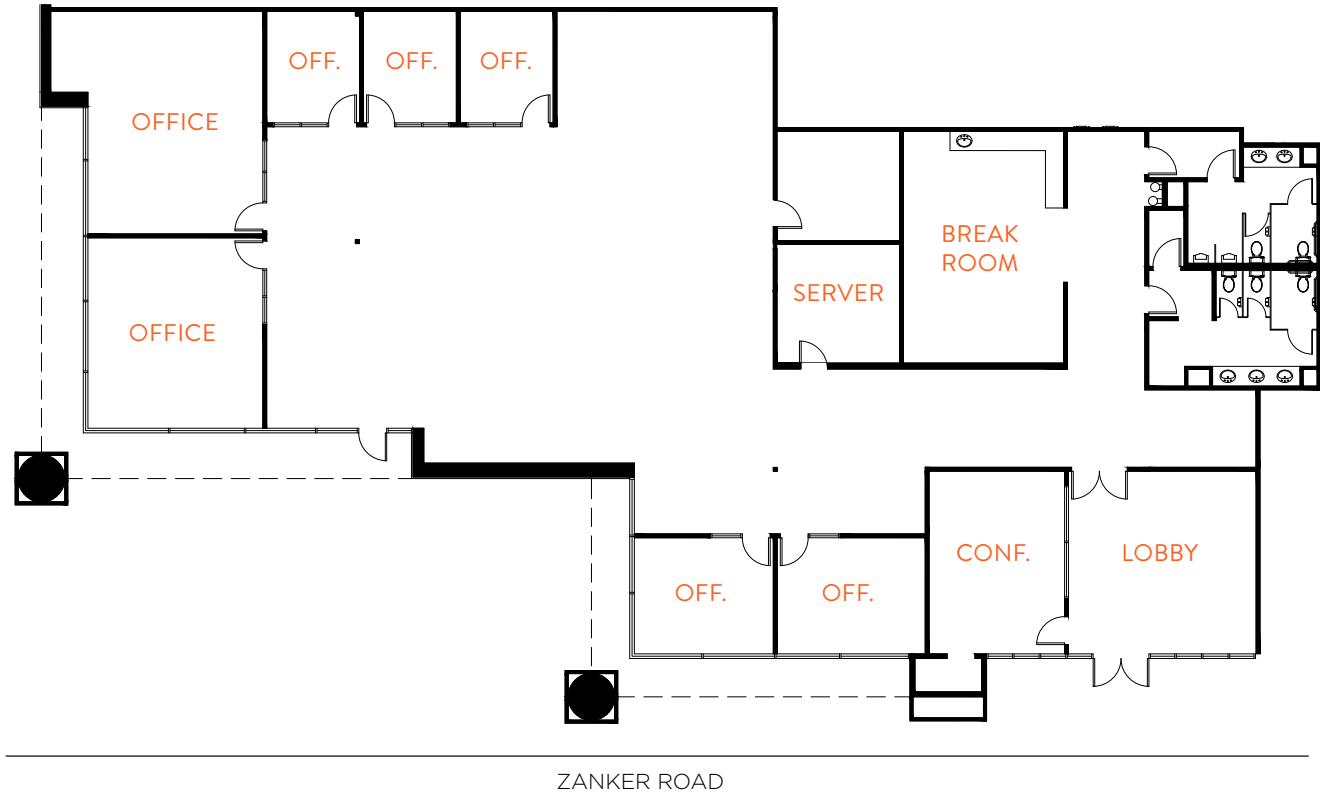
No warranty or representation, expressed or implied, is made as to the accuracy of the information contained herein, and same is submitted subject to error and omissions.

www.prologis.com
CaIDRE Lic #01944561

±7,251 SF



Office/R&D Space For Lease



Alan Guterman
alan.guterman@cushwake.com
ph +1 408 615 3414
cell +1 408 888 0881
Lic #00884495
300 Santana Row, Fifth Floor
San Jose, CA 95128

Jon DeCoite
jon.decoite@cushwake.com
ph +1 408 615 3408
cell +1 408 843 3499
LIC #01471300
300 Santana Row, Fifth Floor
San Jose, CA 95128

Kelly Yoder
kelly.yoder@cushwake.com
ph +1 408 615 3427
cell +1 408 439 6672
LIC #01821117
300 Santana Row, Fifth Floor
San Jose, CA 95128

Steve Horton
steve.horton@cushwake.com
ph +1 408 615 3412
cell +1 408 726 1010
LIC #01127340
300 Santana Row, Fifth Floor
San Jose, CA 95128

Amy Pallas
apallas@prologis.com
ph +1 510 661 4087
cell +1 650 380 3129
LIC #00935272
3353 Gateway Boulevard
Fremont, CA 94538

[View Site Specific COVID-19 Prevention Plan](#)

No warranty or representation, expressed or implied, is made as to the accuracy of the information contained herein, and same is submitted subject to error and omissions.

www.prologis.com
CaIDRE Lic #01944561

±7,251 SF



Office/R&D Space For Lease



Alan Guterman
alan.guterman@cushwake.com
ph +1 408 615 3414
cell +1 408 888 0881
Lic #00884495
300 Santana Row, Fifth Floor
San Jose, CA 95128

Jon DeCoite
jon.decoite@cushwake.com
ph +1 408 615 3408
cell +1 408 843 3499
LIC #01471300
300 Santana Row, Fifth Floor
San Jose, CA 95128

Kelly Yoder
kelly.yoder@cushwake.com
ph +1 408 615 3427
cell +1 408 439 6672
LIC #01821117
300 Santana Row, Fifth Floor
San Jose, CA 95128

Steve Horton
steve.horton@cushwake.com
ph +1 408 615 3412
cell +1 408 726 1010
LIC #01127340
300 Santana Row, Fifth Floor
San Jose, CA 95128

Amy Pallas
apallas@prologis.com
ph +1 510 661 4087
cell +1 650 380 3129
LIC #00935272
3353 Gateway Boulevard
Fremont, CA 94538

[View Site Specific COVID-19 Prevention Plan](#)

No warranty or representation, expressed or implied, is made as to the accuracy of the information contained herein, and same is submitted subject to error and omissions.

www.prologis.com
CaIDRE Lic #01944561