

31,450 SF

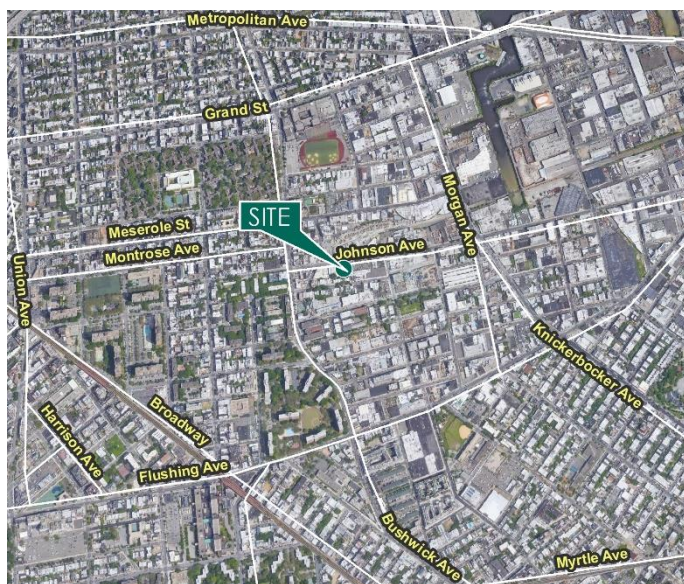
Industrial Space For Lease



Prologis Brooklyn Logistics Center | 280 Johnson Avenue



280 Johnson Avenue
Brooklyn, NY 11206 USA



LOCATION

- Less than three miles to Manhattan
- Easy access to the E or L subway line and B57 and B60 buses
- Walking distance from Morgan Avenue, Montrose Avenue, and Flushing Avenue
- M1-1 and M1-2 zoning

FACILITY

- 31,450 SF industrial building
- 21,450 SF yard
- 5 drive-in doors
- 19' clear height

ADVANTAGES AND AMENITIES

- Over 400' frontage on Johnson Avenue
- Fast, cost-effective forklift and racking sourcing through Prologis Essentials
- Prologis Clear Lease® – Know your lease expenses and capital costs with greater certainty before you sign

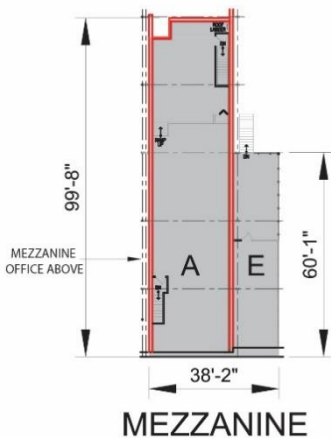
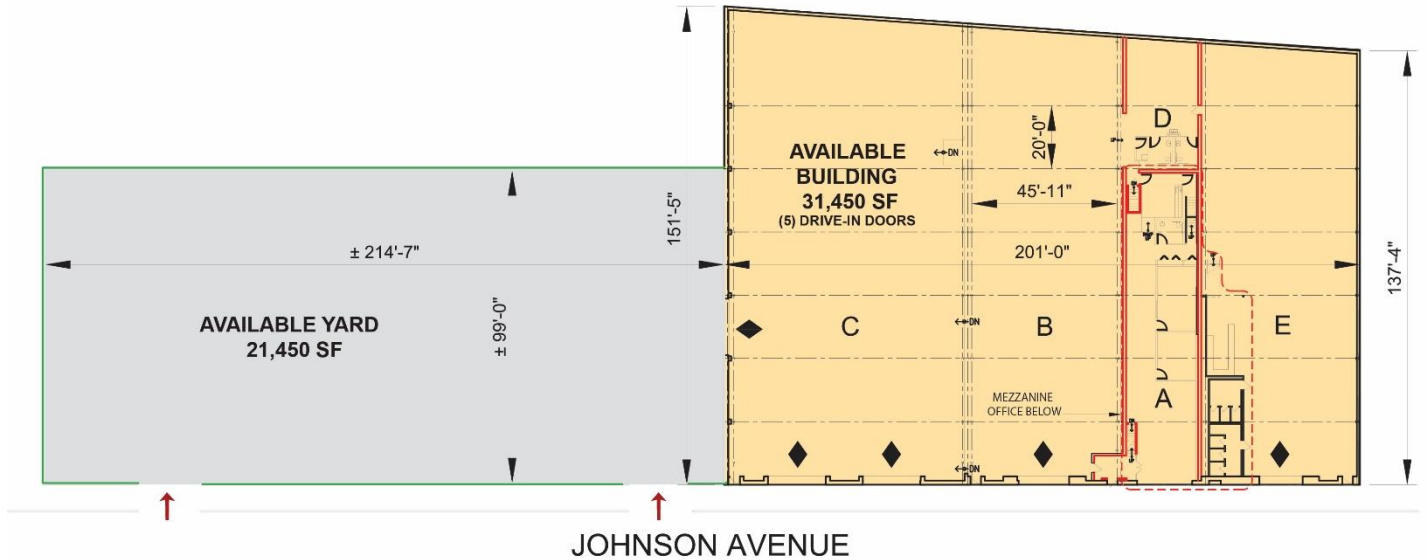
Prologis Essentials: your single-source service for efficient move-in and operations at [prologisessentials.com](https://www.prologisessentials.com)

31,450 SF

Industrial Space For Lease



Prologis Brooklyn Logistics Center | 280 Johnson Avenue



Pinnacle Realty

David Junik
djunik@pinnacleny.com
ph +1 718 784 8282
cell +1 718 371 6406
34-07 Steinway Street
Suite 202
Long Island City, NY 11101

Pinnacle Realty

Decio Baio
dbaio@pinnacleny.com
ph +1 718 784 8282
cell +1 718 784 8436
34-07 Steinway Street
Suite 202
Long Island City, NY 11101

Prologis

Andrew Forsyth
aforsyth@prologis.com
ph +1 201 528 9575
cell +1 201 424 6289
One Meadowlands Plaza
Suite 100
East Rutherford, NJ 07073 USA

Prologis Essentials: your single-source service for efficient move-in and operations at prologisessentials.com

No warranty or representation, expressed or implied, is made as to the accuracy of the information contained herein, and same is submitted subject to error and omissions.