

6,385 SF

Industrial Space For Lease



Prologis Park Trans-Pacific

3204 20th Street E
Building 9
Fife, WA 98424 USA



LOCATION

- Immediate access to Interstate 5
- Three miles to the Port of Tacoma main gate
- No City of Fife B&O taxes
- Union Pacific Rail service

FACILITY

- Total building size: 30,142 SF
- Suite 3204:
 - 6,385 SF total shell
 - 989 SF office
 - 5,396 SF warehouse
 - Drive-in door: 2
 - Dock-high door: 3
- Available June 1, 2020
- Use Prologis Essentials to help with pricing on forklifts and racking for your move-in

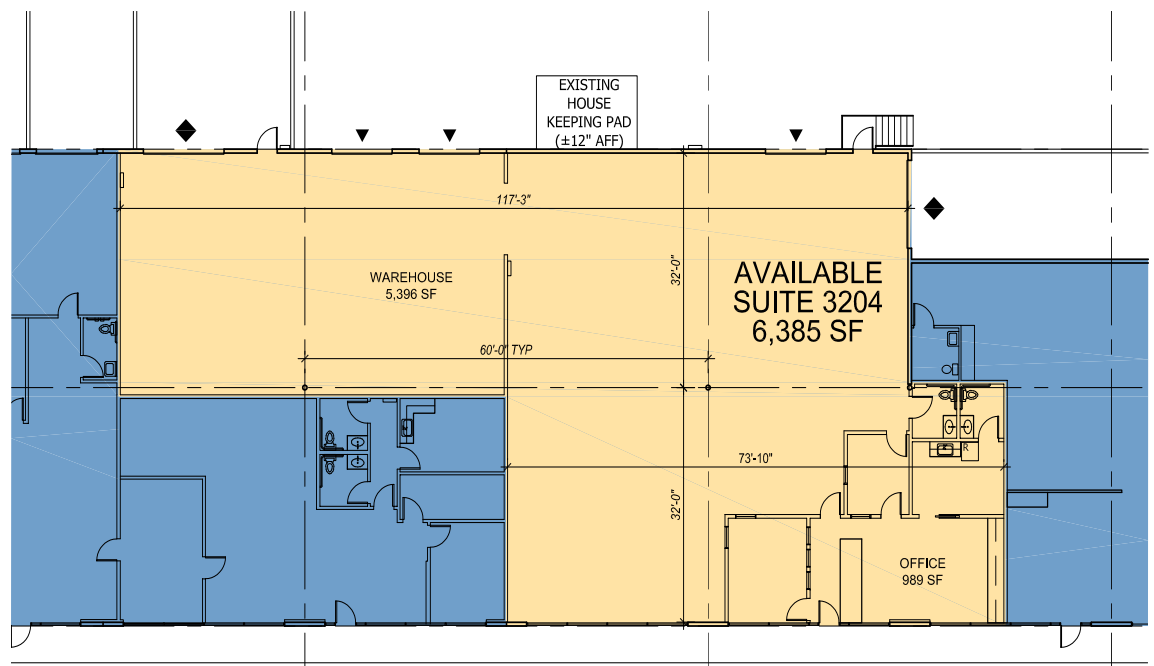
6,385 SF

Industrial Space For Lease



BUILDING 9, SUITE 3204
OVERALL PLAN

NTS



LEGEND:

- ▲ DOCK POSITION
- ▲ OVERSIZED DOCK POSITION
- ▲ DOCK POSITION W/ LEVELER
- ◆ DRIVE-IN DOOR
- RAIL DOOR
- LAND
- LEASED AREA
- AVAILABLE AREA

CBRE

Monte Decker

CBRE, Inc.
monte.decker@cbre.com
ph +1 253 596 0041
1201 Pacific Avenue
Suite 1502
Tacoma, WA 98402 USA

Mark Roddy

Prologis
mroddy@prologis.com
ph +1 206 414 7617
12720 Gateway Drive
Suite 110
Tukwila, WA 98168 USA

No warranty or representation, expressed or implied, is made as to the accuracy of the information contained herein, and same is submitted subject to error and omissions.

www.prologis.com www.cbre.us

© 2019 CBRE, Inc. All rights reserved. This information has been obtained from sources believed reliable, but has not been verified for accuracy or completeness. You should conduct a careful, independent investigation of the property and verify all information. Any reliance on this information is solely at your own risk. CBRE and the CBRE logo are service marks of CBRE, Inc. All other marks displayed on this document are the property of their respective owners. Photos herein are the property of their respective owners. Use of these images without the express written consent of the owner is prohibited. RB 02.12.20