

# PROLOGIS PARK ARRAYANES

Carretera Guadalajara - Chapala Km 24.5, Tlajomulco de Zuñiga Jalisco,  
México Cp. 45670, Edificio 1

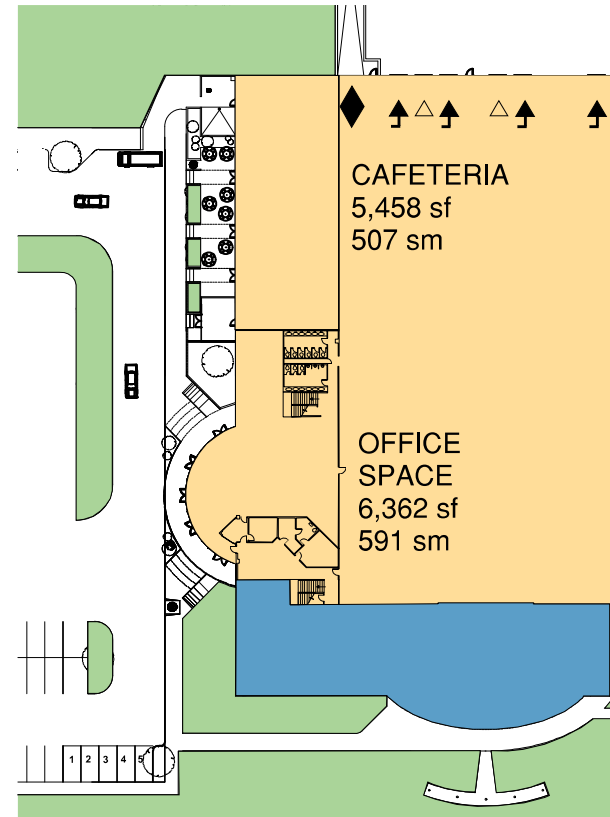
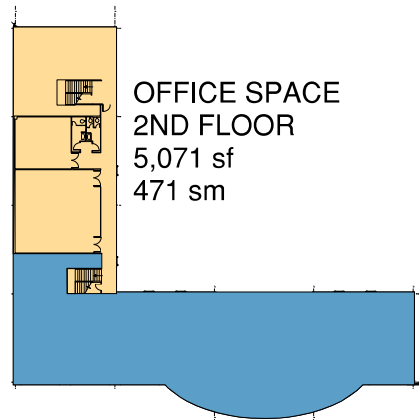
## SITE PLAN

DATA AVAILABLE:	150,998 sf
OFFICE AREA (2 STORIES)	14,028 sm
	16,890 sf
	1,569 sm
AUTO PARKING	70 SPACES
TRAILER PARKING	6 SPACES
DOCK DOORS W/ LEVELER	16 POSITIONS
FUTURE DOCK DOORS	4 POSITIONS
DRIVE IN DOORS	2 POSITION

### LEGEND:

- LEASED
- AVAILABLE
- LAND

- ◆ DRIVE IN DOOR
- △ FUTURE DOCK POSITION
- ▲ DOCK POSITION
- ▲ DOCK POSITION W/LEVELER



**NOTE:**  
THIS CONCEPTUAL PLAN IS FOR MARKETING PURPOSES ONLY, AND HAS BEEN PREPARED BASED ON PRELIMINARY AVAILABLE SITE INFORMATION. DEEMED RELIABLE. ALL DIMENSIONS AND AREA CALCULATIONS ARE SUBJECT TO VERIFICATION BY A PROFESSIONAL ENGINEER FOR COMPLIANCE WITH ALL FEDERAL, STATE AND LOCAL REGULATIONS.



Paseo de los Tamarindos 90 Torre 2 Piso 22  
Col. Bosques de las Lomas,  
Cuajimalpa de Morelos, CDMX 05120  
Phone 52 (55) 1105 2900