

102,516 SF

Industrial Space For Lease



Mid Counties Industrial Center

13930-13950 Mica Street
Santa Fe Springs, CA 90670 USA

LOCATION

- Convenient access to 5, 91, and 605 Freeways
- Zoned M2
- Mid Counties Submarket

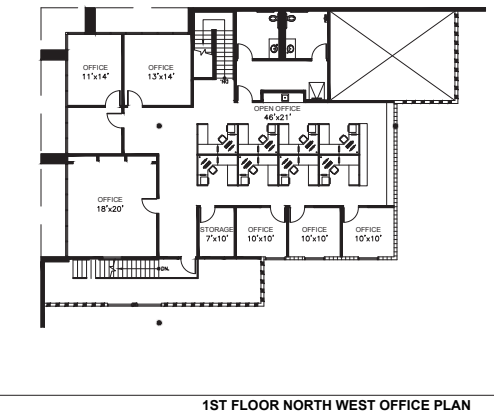
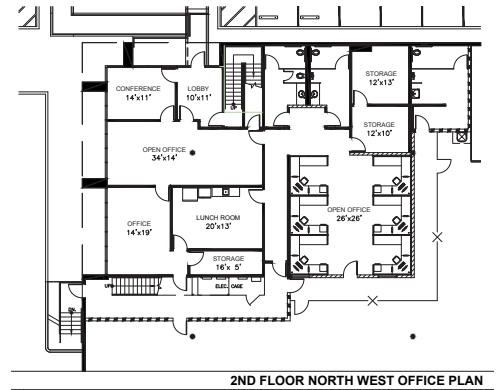
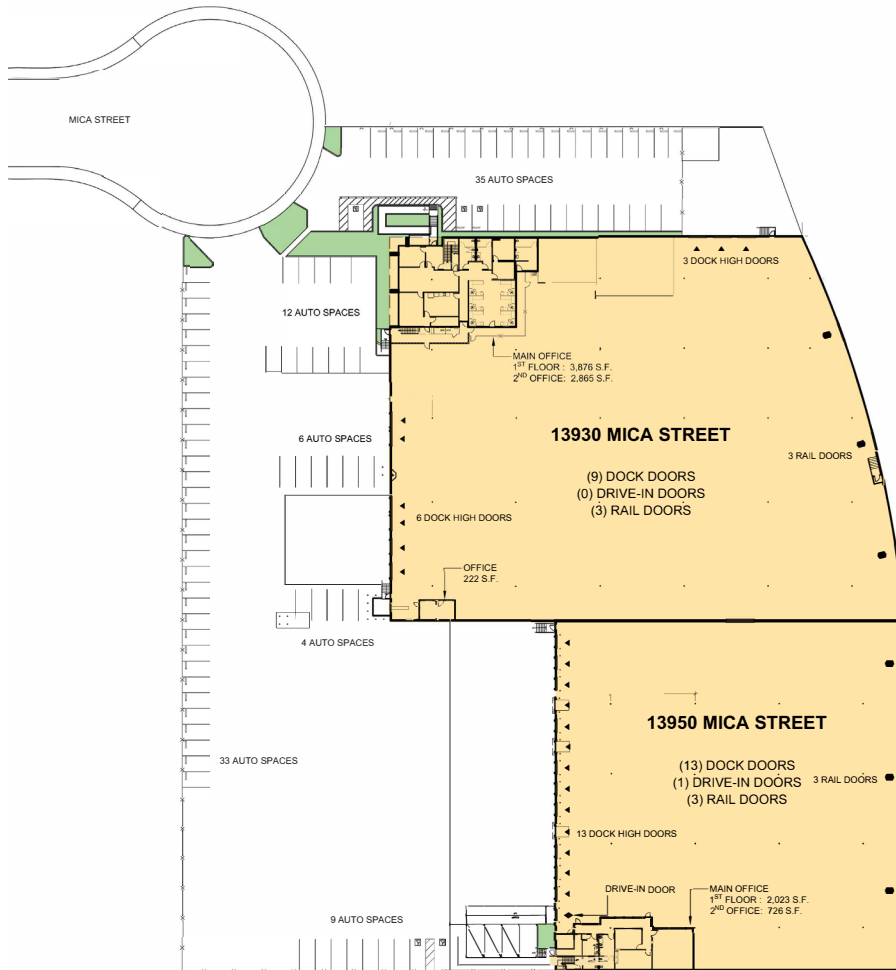


FACILITY

- 102,516 SF Building
- 9,712 SF of Corporate Offices
- 22' - 30' Clearance Height
- Twenty-Two (22) Dock High Doors
- One (1) Ground Level Door
- 0.45/3,000 GPM Sprinkler Calculation
- 1,200 Amps and 277/480 Volts
- Large Fenced Yard
- Active BNSF Rail Service
- Built in 1980

102,516 SF

Industrial Space For Lease



Colliers International
Chris Sheehan, SIOR
License No. 01202469
chris.sheehan@colliers.com
ph +1 310 321 1831
2121 Rosecrans Ave
Suite 3301
El Segundo, CA 90245 USA

Colliers International
Connor Reeves
License No. 01983477
connor.reeves@colliers.com
ph +1 310 321 1889
2121 Rosecrans Ave
Suite 3301
El Segundo, CA 90245 USA

Prologis
Analise Guttman
License No. 01966053
aguttman@prologis.com
ph +1 562 345 9239
2141 Rosecrans Ave
Suite 1151
El Segundo, CA 90245 USA