

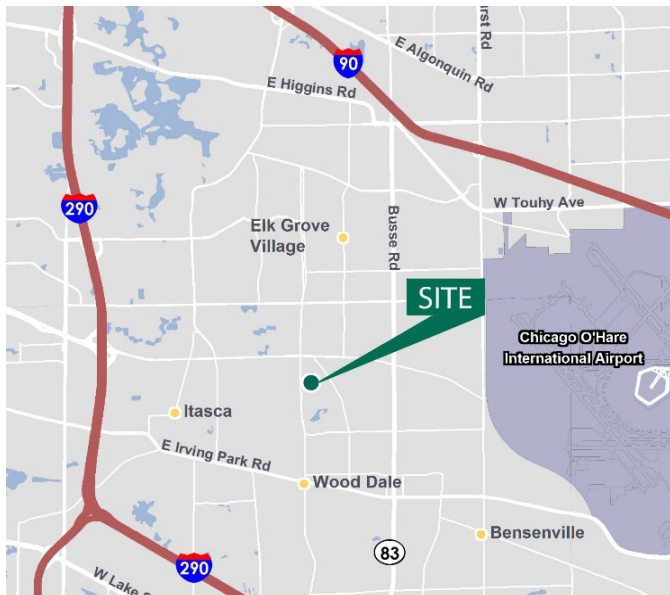
# 231,629 SF

## Industrial Space For Lease



## Prologis Wood Dale

855 Wood Dale Road  
Wood Dale, IL 60191 USA



### LOCATION

- Immediate access to I-390 via Wood Dale Rd. interchange
- Close proximity to I-294, I-290, and I-90
- 3.5 miles to O'Hare South Cargo entrance

### FACILITY

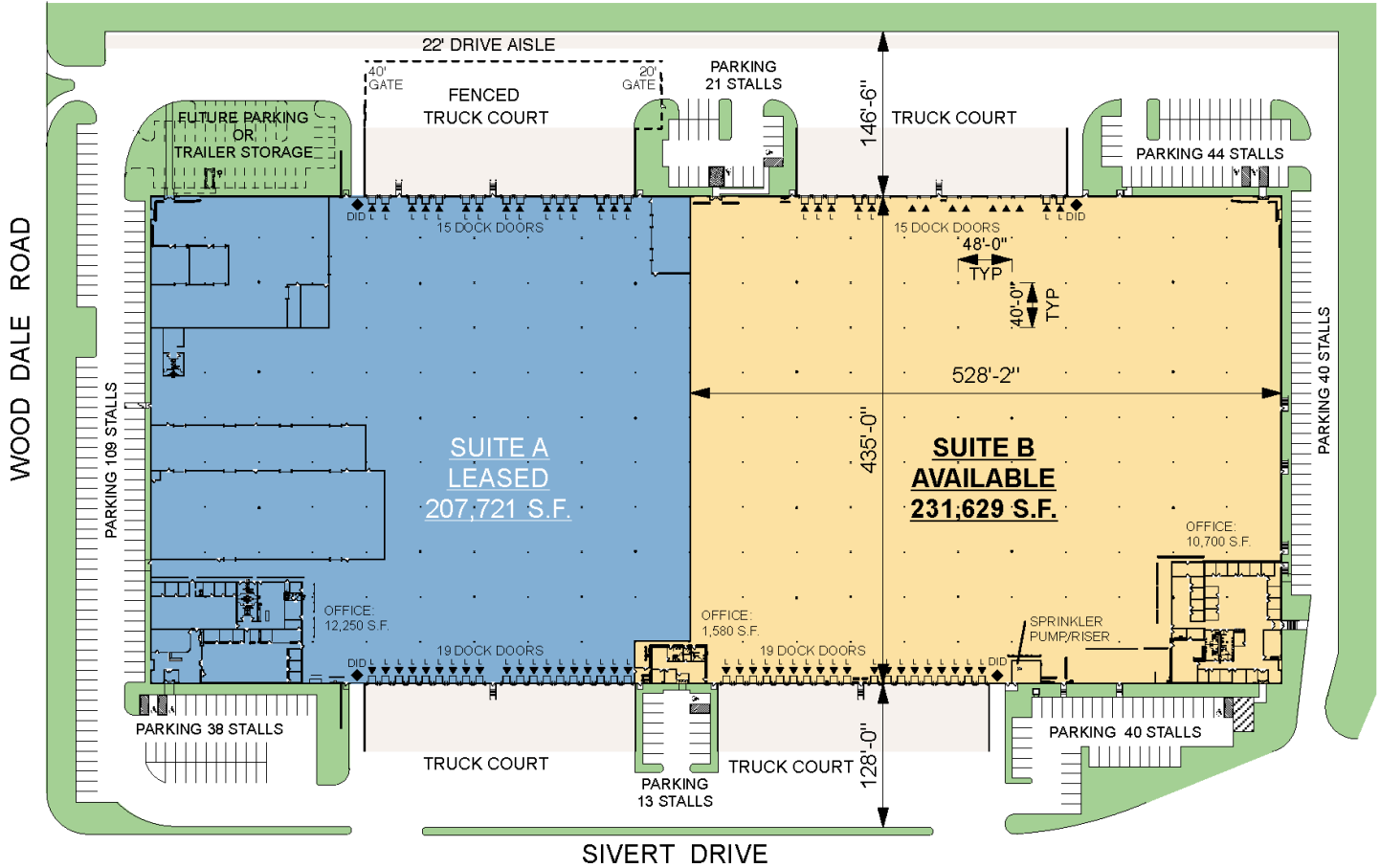
- 439,350 sf building
- 231,629 sf available
- 10,700 sf main office
- 1,580 sf warehouse office
- 30'6" clear height
- 34 exterior docks
- 2 drive-in doors
- 48' x 40' column spacing:
- ESFR sprinkler system
- 2,500 amps and 480/277V
- 158 parking spaces (expandable)

### ADVANTAGES AND AMENITIES

- Cross docked for efficient material flow
- Modern high cube design
- Low DuPage County taxes

# 231,629 SF

## Industrial Space For Lease



### Colliers International

**Matthew J. Stauber**

matthew.stauber@colliers.com

ph +1 847 698 8236

cell +1 847 691 6886

6250 N. River Road, Suite 11-100  
Rosemont, IL 60018 USA

### Colliers International

**Thomas C. Rodeno**

tom.rodeno@colliers.com

ph +1 847 698 8231

cell +1 773 230 2596

6250 N. River Road, Suite 11-100  
Rosemont, IL 60018 USA

### Prologis

**Sean Olvany**

solvany@prologis.com

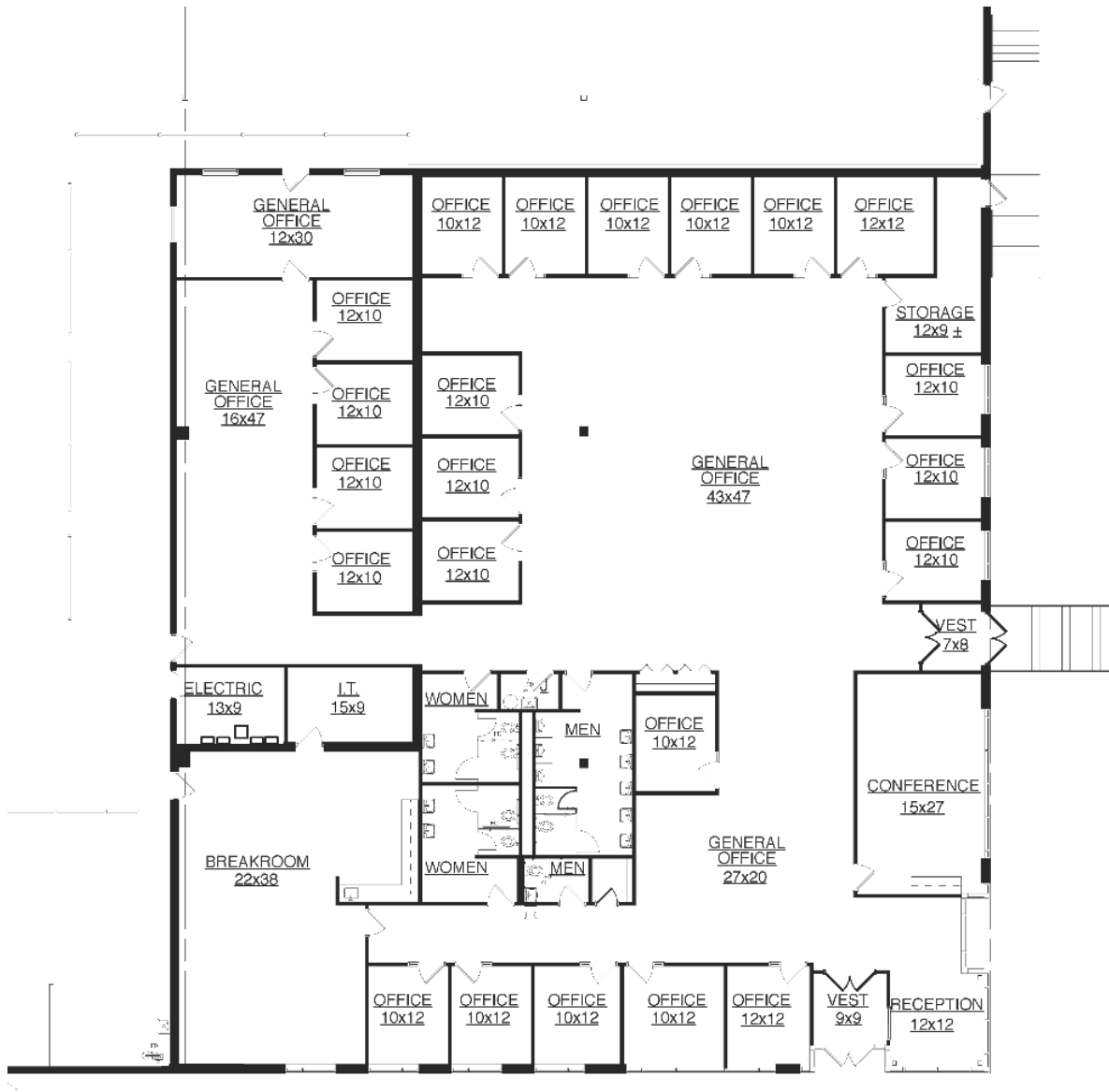
ph +1 847 292 3936

cell +1 847 224 6254

6250 N. River Road, Suite 1100  
Rosemont, IL 60018 USA

# 231,629 SF

## Industrial Space For Lease



### Colliers International

**Matthew J. Stauber**  
matthew.stauber@colliers.com  
ph +1 847 698 8236  
cell +1 847 691 6886  
6250 N. River Road, Suite 11-100  
Rosemont, IL 60018 USA

### Colliers International

**Thomas C. Rodeno**  
tom.rodeno@colliers.com  
ph +1 847 698 8231  
cell +1 773 230 2596  
6250 N. River Road, Suite 11-100  
Rosemont, IL 60018 USA

### Prologis

**Sean Olvany**  
solvany@prologis.com  
ph +1 847 292 3926  
cell +1 847 224 6254  
6250 N. River Road, Suite 1100  
Rosemont, IL 60018 USA

# 231,629 SF

## Industrial Space For Lease



### Colliers International

**Matthew J. Stauber**  
matthew.stauber@colliers.com  
ph +1 847 698 8236  
cell +1 847 691 6886  
6250 N. River Road, Suite 11-100  
Rosemont, IL 60018 USA

### Colliers International

**Thomas C. Rodeno**  
tom.rodeno@colliers.com  
ph +1 847 698 8231  
cell +1 773 230 2596  
6250 N. River Road, Suite 11-100  
Rosemont, IL 60018 USA

### Prologis

**Sean Olvany**  
solvany@prologis.com  
ph +1 847 292 3926  
cell +1 847 224 6254  
6250 N. River Road, Suite 1100  
Rosemont, IL 60018 USA