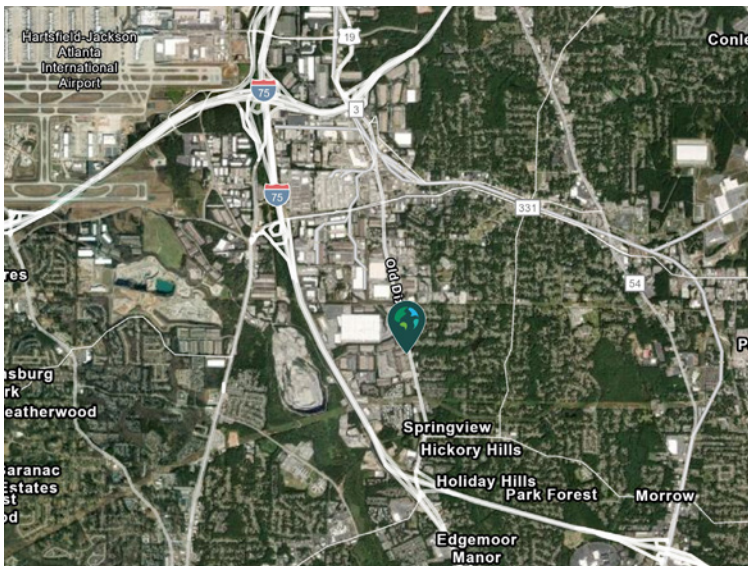


4,200 SF

**5651 Old Dixie Highway, Suite 104
Forest Park, GA 30297**

Prologis Southfield



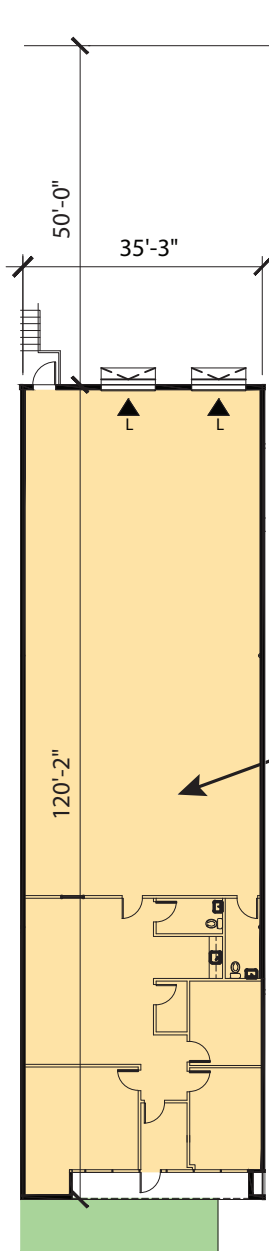
- 0.8 miles to I-75
- 2.6 miles to I-285
- 4.9 miles to Hartsfield-Jackson Atlanta International Airport
- 8 miles to I-85
- Tax Incentives: Clayton County is a designated Tier 1 county, \$3,500 per qualified job tax credit for up to 5 years

Property Features

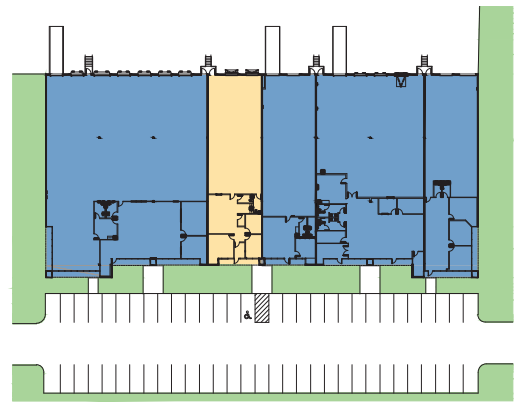
Available Space	4,200 SF
Office SF	1,469 SF
Clear Height	19' minimum
Column Spacing	40' x 35'
Dock Doors	Two (2) with edge of dock levelers
Building Depth	120'
Car Parking Spaces	Eight (8)
Electrical Service	120/240V, 200A
Lighting	LED in office and warehouse



Unlock the full potential of your warehouse with one strategic, single-source partner.



2 DOCK DOORS W/ EOD



KEY PLAN

SUITE 104

4,200 SF AVAILABLE
2,731 SF WAREHOUSE
1,469 SF OFFICE

LEGEND:

- ▲ DOCK DOOR
- ▲
L DOCK DOOR W/LEVELER
- ◆ DRIVE-IN DOOR
- ▲
G ON-GRADE DOOR
- LAND
- LEASED AREA
- VACANT AREA



Seefried Properties

Joseph Kriss

josephk@seefriedproperties.com

ph +1 678 362 4641

Seefried Properties

Tripp Ausband

tausband@seefriedproperties.com

ph +1 770 825 3391

Prologis

Cassie Hanavich

chanavich@prologis.com

ph +1 404 760 7256