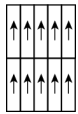


# M | Tumbleweed PRODUCT SPECIFICATIONS

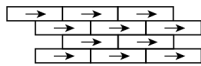
<b>STYLE NUMBER</b>	802Q3
<b>PRODUCT TYPE</b>	Modular
<b>CONSTRUCTION</b>	Multi-Level Pattern Loop
<b>FIBER TYPE</b>	Eco Solution Q® Nylon
<b>DYE METHOD</b>	100% Solution Dyed
<b>PRIMARY BACKING</b>	Non-Woven Synthetic
<b>SECONDARY BACKING</b>	Ecworx

	<b>US Units</b>	<b>Metric Units</b>
<b>PRODUCT SIZE</b>	12 inches x 48 inches	30.48 cm x 121.92 cm
<b>GAUGE</b>	1/10 inches	39.37 per 10 cm
<b>STITCHES</b>	10 per inches	41 per 10 cm
<b>FINISHED PILE THICKNESS</b>	0.067 inches	1.7 mm
<b>AVERAGE DENSITY</b>	8060 oz/yd <sup>3</sup>	
<b>TOTAL THICKNESS</b>	0.208 inches	5.28 mm
<b>TUFTED YARN WEIGHT</b>	15 oz/yd <sup>2</sup>	508.6 g/m <sup>2</sup>

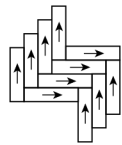
## Installation Methods



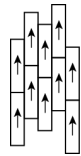
Monolithic



Brick



Herringbone



Stagger

## Performance Testing

<b>PILL TEST</b>	Pass
<b>RADIANT PANEL</b>	Class I
<b>NBS SMOKE</b>	Less than 450
<b>ELECTROSTATIC PROPENSITY</b>	Less than 3.5 kv
<b>CRI GREENLABEL PLUS</b>	GLP9968
<b>ADA COMPLIANCE</b>	>0.6, meets the recommended static coefficient of friction for ADA walking surfaces and accessible routes