

# 59,970 SF

Industrial Space For Lease



## Prologis Stemmons 12



201 Regal Row  
Dallas, TX 75247 USA

### LOCATION

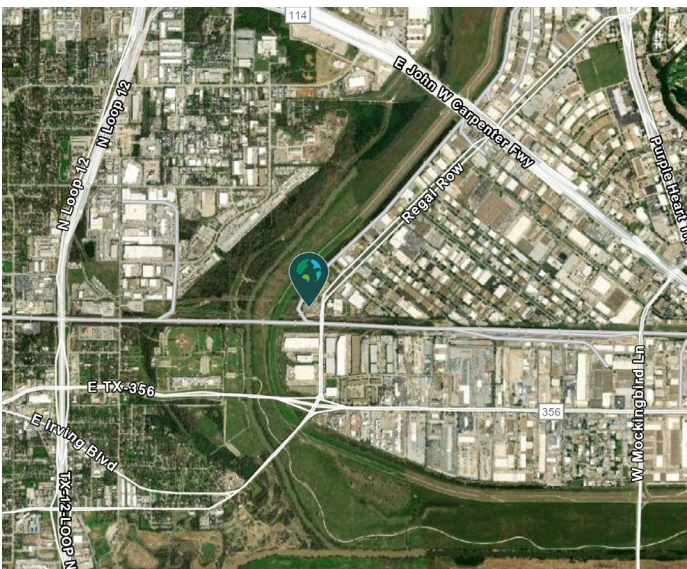
- Easy access to major thoroughfares including I-35, I-30, and TX-183
- ~6 miles to Dallas Love Field Airport

### FACILITY

- 59,970 sf available
- 12,983 sf office
- 22' clear height
- 39'-4" x 25' typical bay spacing
- 7 (10' x 10') overhead dock doors, 2 with pit levelers & 3 with edge of dock levelers
- 1 (10' x 10') overhead dock door with ramp
- Fully sprinklered
- 100% HVAC
- Security fencing with gates

### ADVANTAGES AND AMENITIES

- Access to the [Prologis Essentials](#) platform, which includes:
  - [Operations Essentials](#)
  - [Energy + Sustainability Essentials](#)
  - [Mobility Essentials](#)
  - [Workforce Essentials](#)



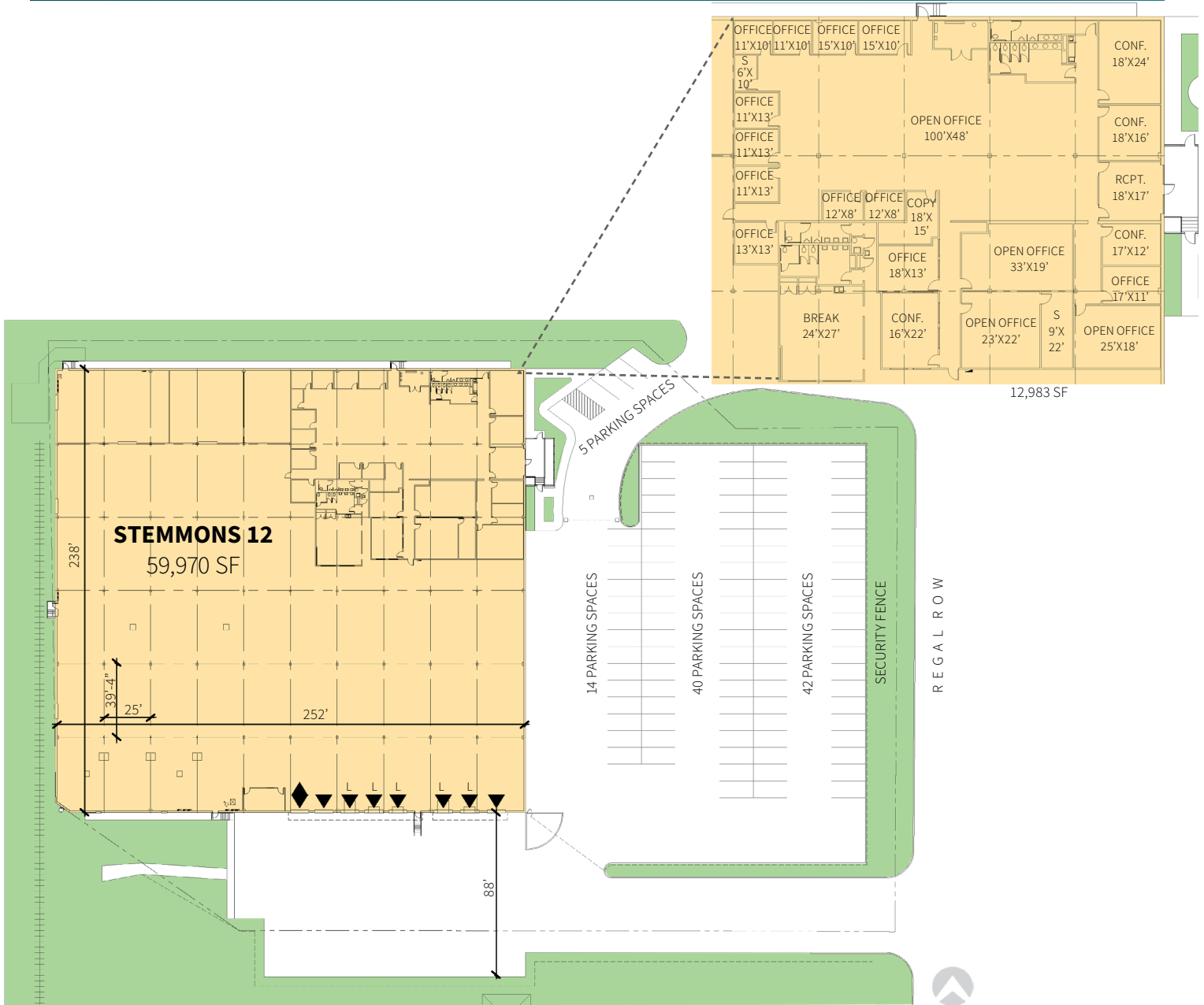
**Prologis Essentials: your single-source service for efficient move-in and operations at [prologisessentials.com](https://prologisessentials.com)**

# 59,970 SF

Industrial Space For Lease



## Prologis Stemmons 12



### SVN Veler Commercial

Timothy Veler, CCIM  
tim.veler@svn.com  
ph +1 214 833 7100  
cell +1 214 300 1355  
13355 Noel Road  
Suite 1101  
Dallas, TX 75240 USA

### SVN Veler Commercial

Benjamin Veler  
ben.veler@svn.com  
ph +1 214 833 7100  
cell +1 214 733 3671  
13355 Noel Road  
Suite 1101  
Dallas, TX 75240 USA

### Prologis

Sal Giunta  
sgiunta@prologis.com  
ph +1 972 884 9247  
cell +1 970 443 7574  
2021 McKinney Avenue  
Suite 1050  
Dallas, TX 75201 USA