

# 40,846 SF

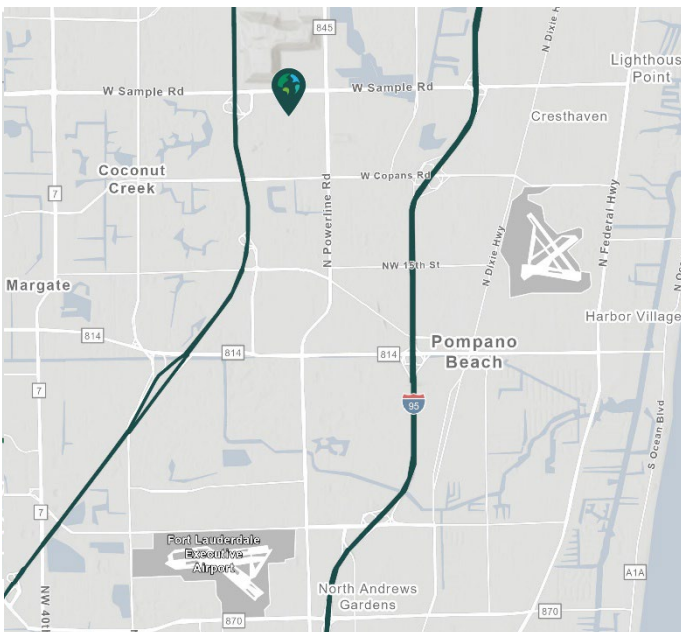
Industrial Space For Lease



## Prologis Pompano Park 2



3000 NW 27<sup>th</sup> Avenue  
Pompano Beach, FL 33069 USA



Scan the QR code for more info!

### LOCATION

- Located on the east side of NW 27<sup>th</sup> Avenue (Blount Road), between Copans Road and Sample Road
- Strategically located between Interstate 95 and the Florida Turnpike

### FACILITY

- Suite 800
- 81,692 SF total building size
- 1,321 SF office
- 14 dock doors (13 with edge of dock levelers)
- 30' clear ceiling height
- ESFR sprinkler system
- 165' truck court depth
- 93 total auto parking spots
- 50' x 45' typical column spacing
- 1600 Amps/ 480 Volt power to the building
- 100% Air-conditioned warehouse
- Available Immediately

### ADVANTAGES AND AMENITIES

- Geographically central to service the Tri-County area of Broward, Palm Beach, and Miami-Dade Counties.
- Immediate access to Florida's Turnpike with I-95 and the Sawgrass Expressway just minutes away.
- [Prologis Clear Lease®](#) – Know your lease expenses and capital cost with greater certainty

**Your single-source service for efficient move-in and operations: [prologisessentials.com](http://prologisessentials.com)**

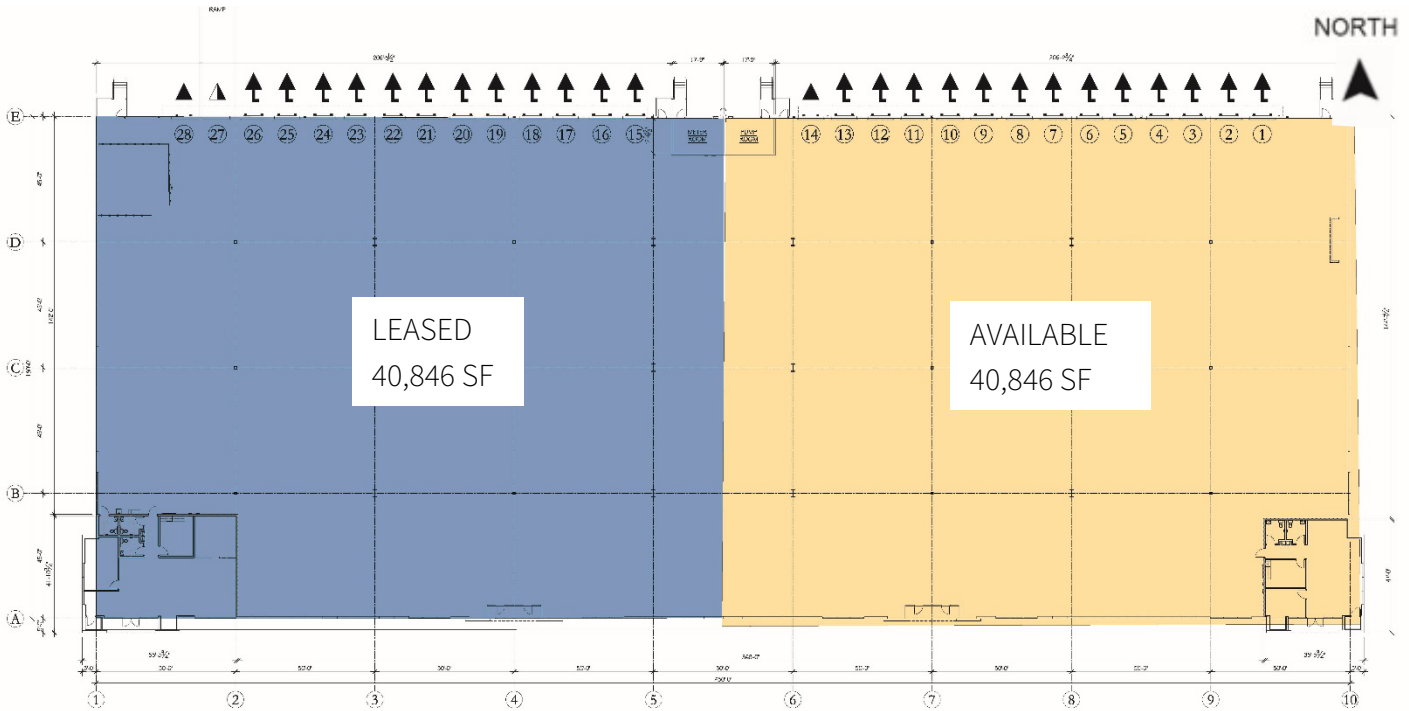
[www.prologis.com](http://www.prologis.com)

# 40,846 SF

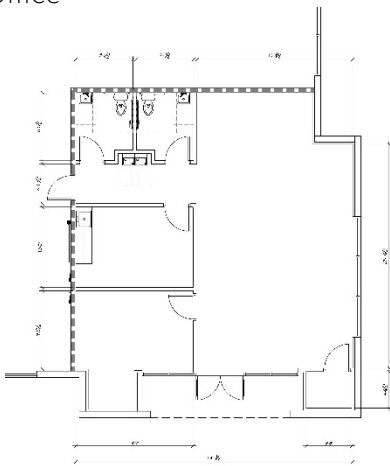
Industrial Space For Lease



## Prologis Pompano Park 2



1,321 SF Office



- LEASED
- AVAILABLE
- LAND
- DOCK DOOR
- DRIVE-IN DOOR



**Chris Metzger, SIOR**  
chris.metzger@cushwake.com  
cell +1 954 415 9155  
225 NW Mizner Boulevard  
Suite 300  
Boca Raton, FL 33432 USA

**Prologis**  
Ashley McMullen  
amcmullen@prologis.com  
ph +1 954 316 1778  
cell +1 954 909 3022  
201 East Las Olas Boulevard  
Suite 1550  
Fort Lauderdale, FL 33301 USA