

# 5224 NE 152<sup>nd</sup> Place

Industrial Space in Portland, OR



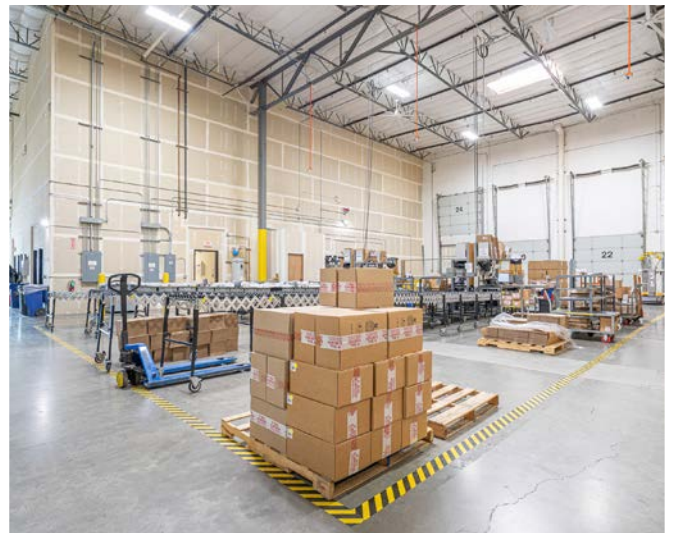
## Property Overview

### Facility

- + Total Size: 81,671 SF
- + Total Office: 7,412 SF
- + Clear Height: 26'
- + Columns: 50' x 50'
- + Dock Doors: 16
- + Grade Doors: 3
- + Sprinkler: ESFR
- + Power: 277/480 Volt, 3-Phase Electrical Service
- + Available 10/1/2022
- + Sublease through: 10/31/2024
- + **Call for Rate Quote**

### Location

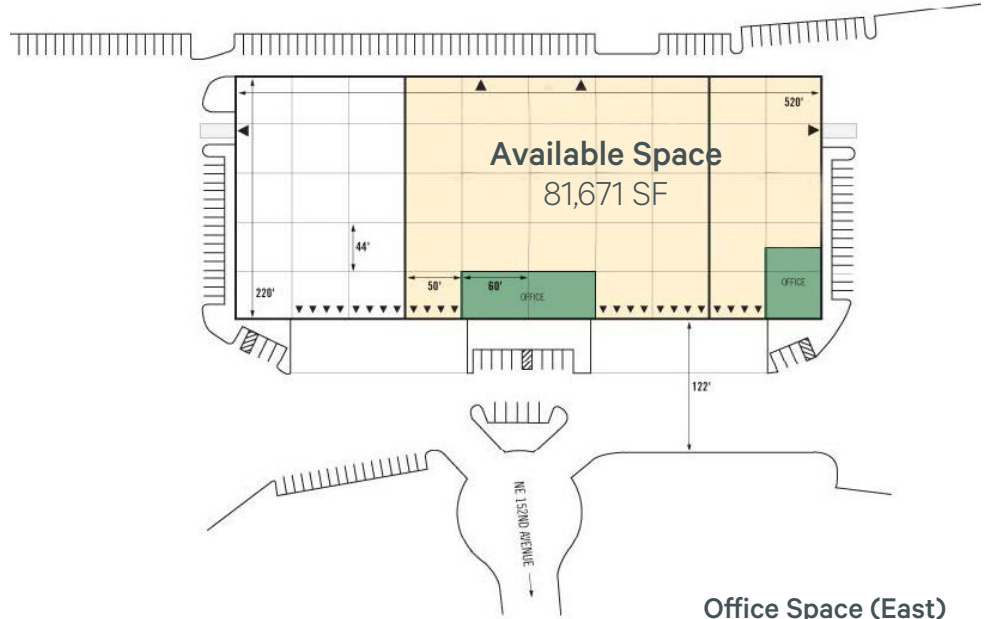
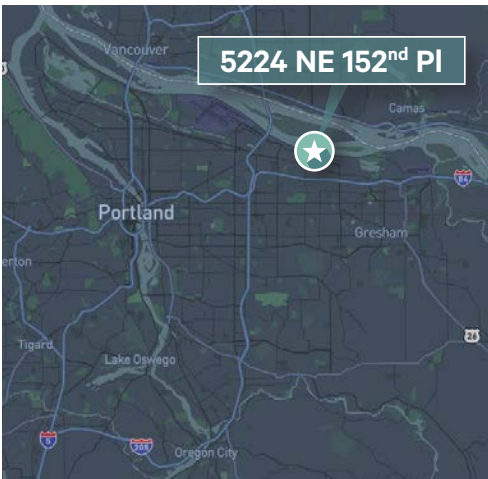
- + 2.5 miles east of I-205
- + 4.8 miles east of Portland International Airport
- + Signalized access to NE Airport Way



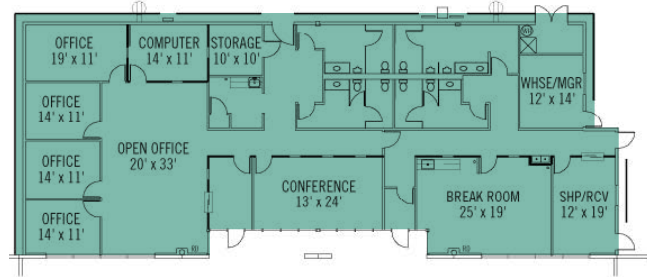
5224 NE 152<sup>nd</sup> Place  
Portland, OR 97230

For Sublease

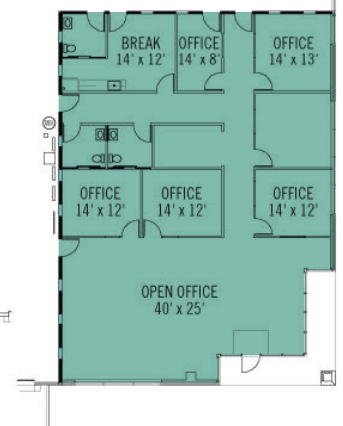
# Industrial Space For Sublease



Office Space (West)  
4,476 SF



Office Space (East)  
2,936 SF



## Contact Us

Stuart Skaug, SIOR  
Executive Vice President  
+1 503 221 4822  
[Stuart.Skaug@cbre.com](mailto:Stuart.Skaug@cbre.com)

Joshua Goudy  
Associate  
+1 503 221 4825  
[Joshua.Goudy@cbre.com](mailto:Joshua.Goudy@cbre.com)

© 2022 CBRE, Inc. All rights reserved. This information has been obtained from sources believed reliable, but has not been verified for accuracy or completeness. You should conduct a careful, independent investigation of the property and verify all information. Any reliance on this information is solely at your own risk. CBRE and the CBRE logo are service marks of CBRE, Inc. All other marks displayed on this document are the property of their respective owners, and the use of such logos does not imply any affiliation with or endorsement of CBRE. Photos herein are the property of their respective owners. Use of these images without the express written consent of the owner is prohibited.