

38,020 SF



Industrial Space For Lease

Prologis Park Trans-Pacific 2



3900A Industry Drive East
Fife, WA 98424 USA

LOCATION

- Located between exit 136 and exit 137 on Interstate 5
- Three miles to the Port of Tacoma main gate
- No City of Fife B&O taxes
- Union Pacific Rail service

FACILITY

- Shell space: 38,020 SF
- Warehouse space: 33,873 SF
- Office space: 7,884 SF
- First floor office: 4,147 SF
- Mezzanine: 3,737 SF
- Clear height: 24'
- Dock doors: 9 (2 pit and 1 EOD leveler)
- Grade level doors: 1
- Rail doors: 2



Prologis Essentials: your single-source service for efficient move-in and operations at [prologisessentials.com](https://www.prologisessentials.com)

www.prologis.com

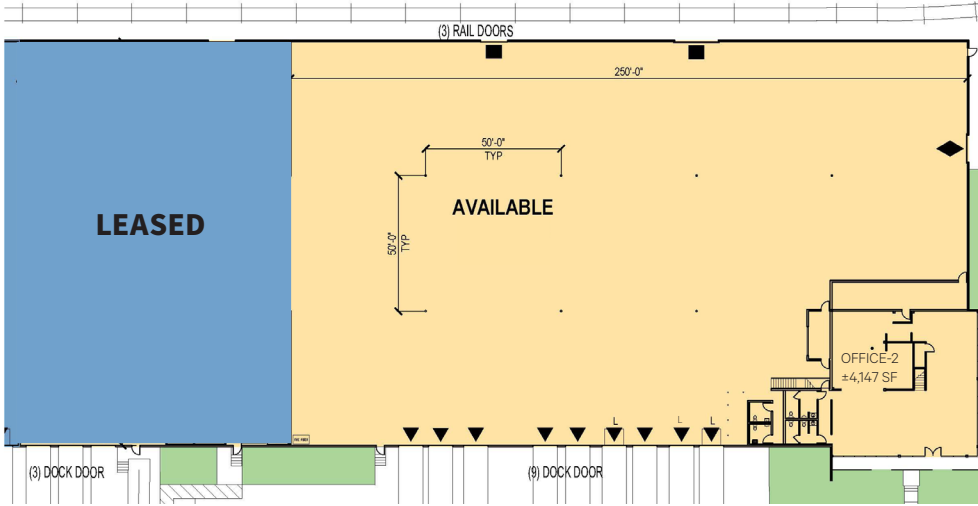
38,020 SF



Industrial Space For Lease

Prologis Park Trans-Pacific

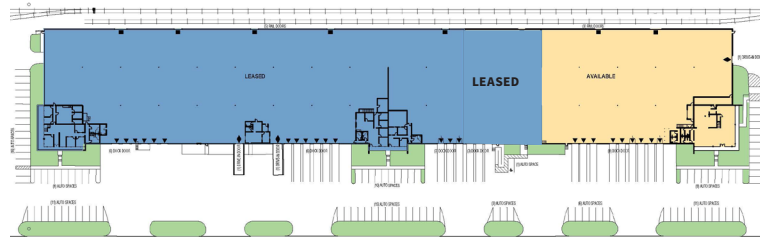
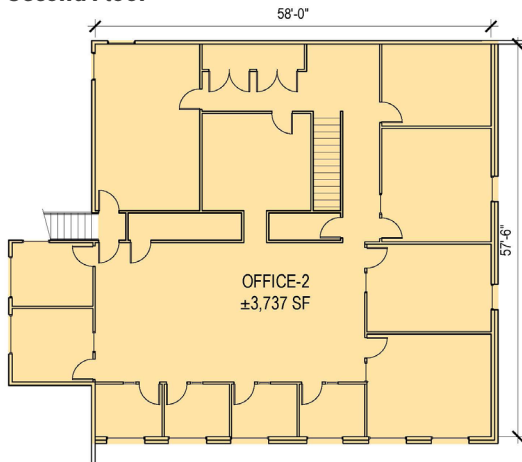
First Floor



LEGEND:

- ▼ DOCK DOOR
- ▼ DOCK DOOR W/ LEVEL
- ◆ DRIVE-IN DOOR
- RAIL DOOR
- AVAILABLE AREA

Second Floor



CBRE, Inc.

Monte Decker, CCIM
monte.decker@cbre.com
ph +1 253 596 0041
710 Market Street
Tacoma, WA 98402 USA

Prologis

Kimberley Nemethy
knemethy@prologis.com
ph +1 206 414 7616
33930 Weyerhaeuser Way S
Suite 100
Federal Way, WA 98001 USA

© 2024 CBRE, Inc. All rights reserved. This information has been obtained from sources believed reliable but has not been verified for accuracy or completeness. You should conduct a careful, independent investigation of the property and verify all information. Any reliance on this information is solely at your own risk. SD 10.23.24

Prologis Essentials: your single-source service for efficient move-in and operations at [prologisessentials.com](https://www.prologisessentials.com)

No warranty or representation, expressed or implied, is made as to the accuracy of the information contained herein, and same is submitted subject to error and omissions.