

14,900 SF

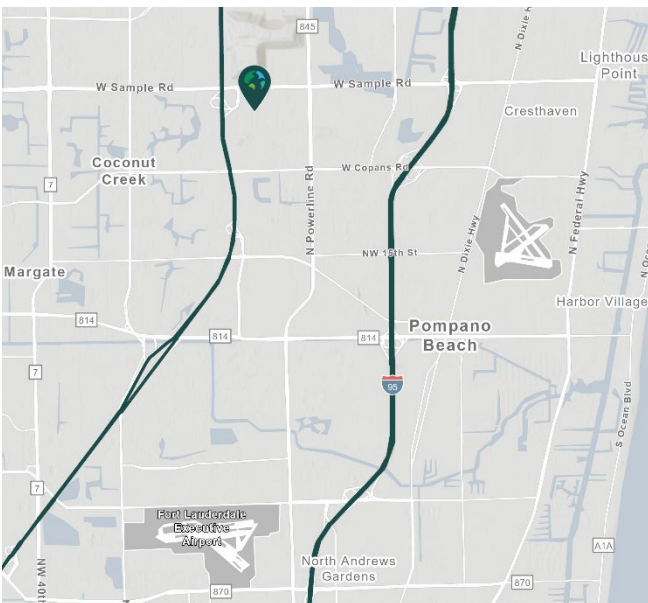
Industrial Space For Lease



Prologis Pompano Park 5



2901 NW 27th Avenue
Pompano Beach, FL 33069 USA



LOCATION

- Located on the east side of NW 27th Avenue (Blount Road), between Copans Road and Sample Road
- Strategically located between Interstate 95 and the Florida Turnpike

FACILITY

- Suite 2923
- 112,688 SF total building size
- 14,900 SF available
- 2,761 SF office
- 4 dock doors
- 32' clear ceiling height
- ESFR sprinkler system
- 180' truck court depth
- 192 total auto parking spots
- Available July 1, 2024

ADVANTAGES AND AMENITIES

- [Prologis Clear Lease®](#) – Know your lease expenses and capital cost with greater certainty

Your single-source service for efficient move-in and operations: [prologisessentials.com](https://www.prologisessentials.com)



Scan the QR code for more info!

14,900 SF

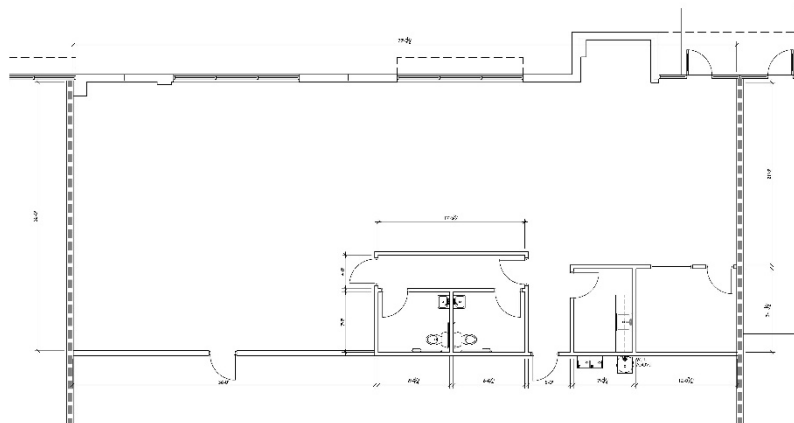
Industrial Space For Lease



Prologis Pompano Park 5



2,761 SF Office



- LEASED
- AVAILABLE
- LAND
- DOCK DOOR
- DRIVE-IN DOOR



Chris Metzger, SIOR
 chris.metzger@cushwake.com
 cell +1 954 415 9155
 225 NW Mizner Boulevard
 Suite 300
 Boca Raton, FL 33432 USA

Prologis

Ashley McMullen
 amcmullen@prologis.com
 ph +1 954 316 1778
 cell +1 954 909 3022
 201 East Las Olas Boulevard
 Suite 1550
 Fort Lauderdale, FL 33301 USA