

# 27,507 SF

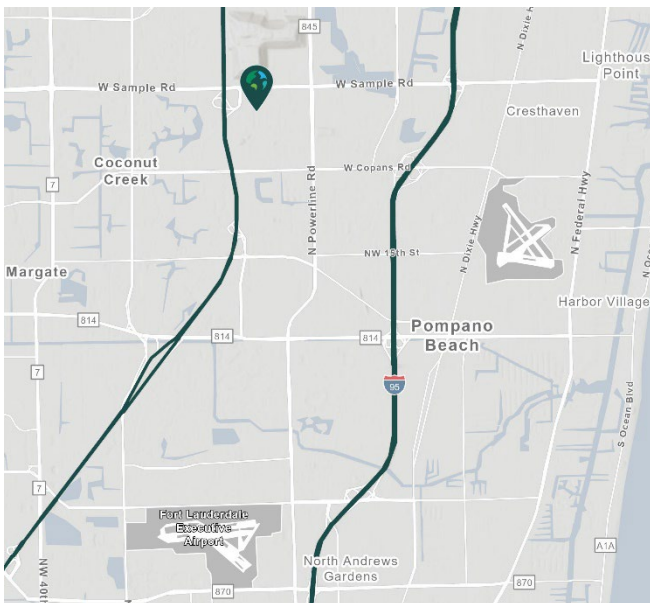
Industrial Space For Lease



## Prologis Pompano Park 3



2900 NW 27<sup>th</sup> Avenue  
Pompano Beach, FL 33069 USA



### LOCATION

- Located on the east side of NW 27<sup>th</sup> Avenue (Blount Road), between Copans Road and Sample Road
- Strategically located between Interstate 95 and the Florida Turnpike

### FACILITY

- Suite 100
- 82,692 SF total building size
- 27,507 SF available
- 3,889 SF office
- 9 dock doors
- 1 drive in ramp
- 24' clear ceiling height
- ESFR sprinkler system
- 118' truck court depth
- 89 total auto parking spots
- Available November 1, 2024

### ADVANTAGES AND AMENITIES

- [Prologis Clear Lease®](#) – Know your lease expenses and capital cost with greater certainty

**Your single-source service for efficient move-in and operations: [prologisessentials.com](https://www.prologisessentials.com)**



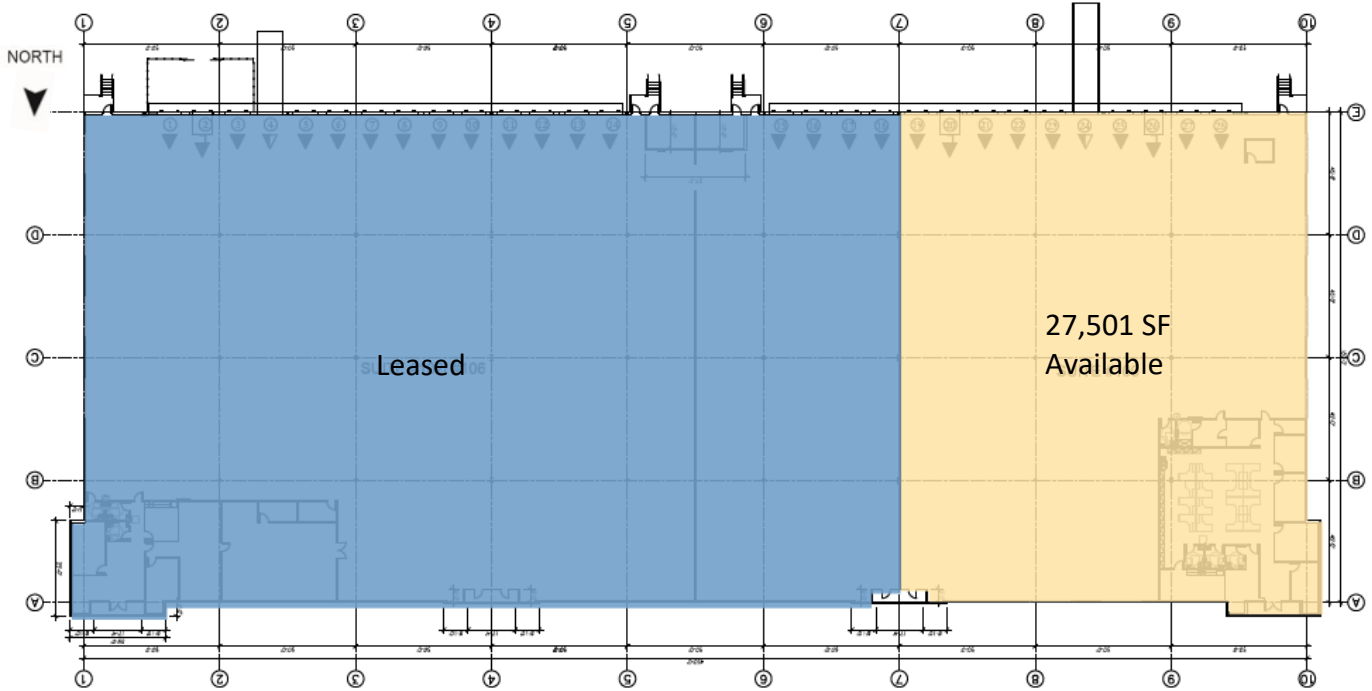
Scan the QR code for more info!

# 27,507 SF

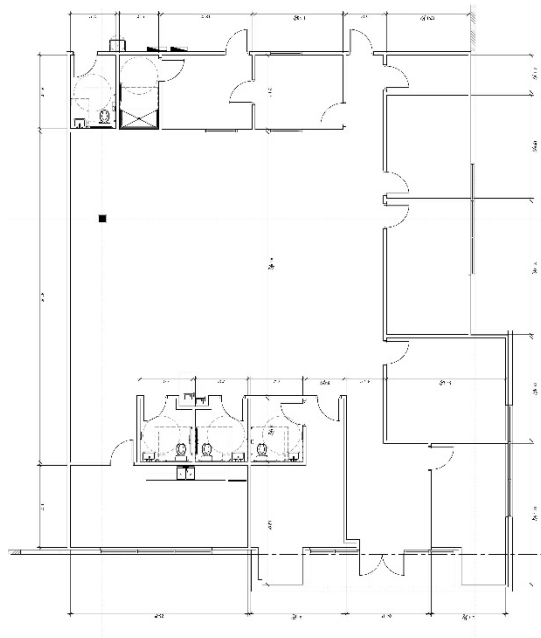
Industrial Space For Lease



## Prologis Pompano Park 3



3,889 SF Office



- LEASED
- AVAILABLE
- LAND
- DOCK DOOR
- DRIVE-IN DOOR



Chris Metzger, SIOR  
chris.metzger@cushwake.com  
cell +1 954 415 9155  
225 NW Mizner Boulevard  
Suite 300  
Boca Raton, FL 33432 USA

### Prologis

Ashley McMullen  
amcmullen@prologis.com  
ph +1 954 316 1778  
cell +1 954 909 3022  
201 East Las Olas Boulevard  
Suite 1550  
Fort Lauderdale, FL 33301 USA